

Original article

Ventricular Arrhythmias in Super-responders to Cardiac Resynchronization Therapy



Inés García-Lunar,^{a,b,c} Víctor Castro-Urda,^{a,*} Jorge Toquero-Ramos,^a Susana Mingo-Santos,^d Vanessa Moñivas-Palomero,^d Cristina Daniela Mitroi,^d Manuel Sánchez-García,^a Elena Pérez-Pereira,^a Hugo E. Delgado,^a and Ignacio Fernández-Lozano^a

^aUnidad de Arritmias, Servicio de Cardiología, Hospital Universitario Puerta de Hierro Majadahonda, Majadahonda, Madrid, Spain

^bServicio de Cardiología, Hospital Universitario Quirón, Universidad Europea de Madrid, Madrid, Spain

^cFundación Centro Nacional de Investigaciones Cardiovasculares Carlos III (CNIC), Madrid, Spain

^dUnidad de Imagen Cardíaca, Servicio de Cardiología, Hospital Universitario Puerta de Hierro Majadahonda, Majadahonda, Madrid, Spain

Article history:

Received 13 August 2013

Accepted 27 January 2014

Available online 4 June 2014

Keywords:

Cardiac resynchronization therapy

Super-responders

Ventricular arrhythmias

ABSTRACT

Introduction and objectives: Cardiac resynchronization therapy is associated with improved quality of life and reduced morbidity and mortality in patients with severe ventricular dysfunction and wide QRS. However, its role in the reduction of ventricular arrhythmias is more controversial.

Methods: We compared the incidence of ventricular arrhythmias in patients who were undergoing cardiac resynchronization therapy with an implantable cardioverter-defibrillator in terms of the degree of echocardiographic response to resynchronization. Patients were classified in 3 subgroups; super-responders, responders, and nonresponders.

Results: We included 196 patients who were followed up for a median 30.1 months [interquartile range, 18.0-55.1 months]. We recorded the presence of ventricular arrhythmias in 37 patients (18.8%); 3 patients (5.9%) in the super-responder group had ventricular arrhythmias vs 14 (22.2%) among the responders and 20 (24.4%) in the group of nonresponders ($P = .025$). In multivariate analysis, the only independent predictors of the appearance of ventricular arrhythmias were secondary-prevention device implantation (odds ratio = 4.04; 95% confidence interval, 1.52-10.75; $P = .005$), absence of echocardiographic super-response (odds ratio = 3.81; 95% confidence interval, 1.04-13.93; $P = .043$), QRS >160 ms (odds ratio = 2.39; 95% confidence interval, 1.00-1.35; $P = .049$) and treatment with amiodarone (odds ratio = 2.47; 95% confidence interval, 1.03-5.91; $P = .041$).

Conclusions: The patients classified as super-responders to cardiac resynchronization therapy had a significant reduction in incidence of ventricular arrhythmias by comparison with the other patients. Despite this, arrhythmic episodes do not completely disappear in this subgroup.

© 2014 Sociedad Española de Cardiología. Published by Elsevier España, S.L.U. All rights reserved.

Arritmias ventriculares en superrespondedores a la terapia de resincronización cardíaca

RESUMEN

Introducción y objetivos: La terapia de resincronización cardíaca se asocia a mejora de la calidad de vida y reducción de la morbimortalidad de los pacientes con disfunción ventricular grave y QRS ancho. Sobre su papel en la reducción de arritmias ventriculares, hay más discusión.

Métodos: Se comparó la incidencia de arritmias ventriculares en pacientes portadores de desfibrilador automático implantable con función de resincronización cardíaca, según el grado de respuesta ecocardiográfica a la resincronización. Se clasificó a los pacientes en tres subgrupos: superrespondedores, respondedores y no respondedores.

Resultados: Se incluyó a 196 pacientes seguidos durante una mediana de 30,1 [intervalo intercuartílico, 18,0-55,1] meses. Se documentó presencia de arritmias ventriculares en 37 pacientes (18,8%); 3 pacientes (5,9%) del grupo de superrespondedores presentaron arritmias ventriculares, en comparación con 14 (22,2%) del grupo de respondedores y 20 (24,4%) del grupo de no respondedores ($p = 0,025$). En el análisis multivariable, el implante del dispositivo en prevención secundaria (odds ratio = 4,04; intervalo de confianza del 95%, 1,52-10,75; $p = 0,005$), la ausencia de superrespuesta ecocardiográfica (odds ratio = 3,81; intervalo de confianza del 95%, 1,04-13,93; $p = 0,043$), un QRS > 160 ms (odds ratio = 2,39; intervalo de confianza del 95%, 1,00-1,35; $p = 0,049$) y el tratamiento con amiodarona (odds ratio = 2,47; intervalo de confianza del 95%, 1,03-5,91; $p = 0,041$) fueron los únicos predictores independientes de aparición de arritmias ventriculares.

Palabras clave:

Terapia de resincronización cardíaca

Superrespondedores

Arritmias ventriculares

* Corresponding author: Unidad de Arritmias, Servicio de Cardiología, Hospital Universitario Puerta de Hierro Majadahonda, Manuel de Falla 1, 28222 Majadahonda, Madrid, Spain.

E-mail address: vcastrou14@me.com (V. Castro-Urda).

Conclusiones: Los pacientes superrespondedores a la terapia de resincronización cardíaca presentan una disminución significativa en la incidencia de arritmias ventriculares respecto a los demás pacientes. Pese a ello, los episodios arrítmicos no llegan a desaparecer por completo en este subgrupo.

© 2014 Sociedad Española de Cardiología. Publicado por Elsevier España, S.L.U. Todos los derechos reservados.

Abbreviations

CRT: cardiac resynchronization therapy
 ICD: implantable cardioverter-defibrillator
 LVEF: left ventricular ejection fraction
 NR: nonresponders
 R: responders
 SR: super-responders

INTRODUCTION

Cardiac resynchronization therapy (CRT) has been shown to improve quality of life and reduce hospitalization and mortality of patients with severe ventricular dysfunction and wide QRS in the surface electrocardiogram.^{1–4}

The degree of ventricular remodeling with biventricular pacing varies greatly. It has been reported that up to 20% or 30% of patients have a very significant reduction in ventricular volume and near normalization of left ventricular ejection fraction (LVEF). These patients have been termed super-responders (SR) because of their reduced mortality and cardiovascular events, compared with slight responders or nonresponders (NR).^{5–6}

However, the role of CRT in reducing ventricular arrhythmias is debatable and the issue excites much controversy. Some studies confirm that CRT is associated with a reduction in sudden death and ventricular arrhythmias,^{7–11} principally when there is positive remodeling and a long follow-up. Other studies show no reduction or even an increase in ventricular arrhythmias.^{12–15} The reduction in ventricular arrhythmias is related to positive ventricular remodeling, improved ejection fraction, and a reduction in ventricular volume, parietal stress, and neurohormonal activity. The increased incidence of ventricular arrhythmias is caused by a change in the activation sequence from the epicardium to the endocardium, with greater transmural dispersion of repolarization, lengthening of the QT interval, and the risk of polymorphic arrhythmias of the *torsade de pointes* type.

The objective of the present study is to analyze and compare the incidence of ventricular arrhythmias in patients receiving CRT with implantable cardioverter-defibrillators (ICDs) in terms of the type of echocardiographic response. In the case of absence or very low incidence of ventricular arrhythmias in patients considered SR, when the time comes to replace the device we might consider substituting a pacemaker for the ICD, with the consequent cost savings-of vital importance nowadays.

METHODS

Selection of Patients and Design

We conducted a retrospective analysis of patients who had undergone CRT-ICD implantation. We included all patients with a CRT-ICD implanted in our center between June 1999 and February 2012. The inclusion criteria were the following: patients with heart failure and in New York Heart Association functional class \geq II, left

ventricular ejection fraction (LVEF) \leq 35%, QRS \geq 120 ms, and optimal medical treatment.

The following variables were analyzed: age, sex, New York Heart Association functional class, type of heart disease, previous myocardial infarction, LVEF, QRS width, left ventricular end-systolic diameter and left ventricular end-diastolic diameter, mitral regurgitation grade, primary- or secondary-prevention implantation, presence of atrial fibrillation, type of conduction disturbance, final position of the electrode in 2 different projections (apical, medial or basal in posteroanterior and anterior projection, lateral or posterior in lateral projection), left ventricle electrode threshold, drug treatment for heart failure, antiarrhythmic drug treatment, and presence of diabetes mellitus or chronic kidney failure, which was defined as creatinine clearance $<$ 50 mL/min.

Follow-up

Follow-up in ICD outpatient clinics was every 6 months or 1 year. We also used distance-monitoring when the device implanted was equipped with this technology. Furthermore, the devices were examined on visits to the emergency room for any ICD-related symptoms. Three expert electrophysiologists (IFL, JTR and VCU) reviewed and analyzed all episodes of ventricular arrhythmia.

Classification of Patients

We classified as SR¹⁶ those patients with LVEF either at least twice that of the measurement taken at implantation or \geq 45% at 12 months postimplantation. For patients with $<$ 1-year follow-up, we used data from the last recorded echocardiogram. We classified as responders (R)¹⁷ those with LVEF of \geq 5 points more at 12 months postimplantation than the measurement taken at implantation. For patients with $<$ 1-year follow-up, we used data from the last recorded echocardiogram. All other patients were classified as NR.

Echocardiograms

All echocardiographic studies were performed with Philips iE33[®] equipment. All patients underwent echocardiography at implantation and again at 12 months. The following measurements were taken: LVEF using Simpson equation, left ventricular end-systolic diameter, left ventricular end-diastolic diameter, and mitral regurgitation grade. Three expert echocardiographers (SMS, VMP and IGL) reviewed all the studies.

Device Programming

We defined as ventricular arrhythmia any episode detected by the ICD that required antitachycardia pacing or shock treatment. The ICD programming was at the discretion of the physician responsible. However, the standard approach to programming in our center is based on long detection intervals and high cutoff points for tachycardia and fibrillation, which reduces the risk of adopting avoidable or inappropriate

therapies.^{18,19} Furthermore, programming normally involves sequences of antitachycardia pacing in the ventricular tachycardia zone and antitachycardia pacing during or before the shock in the ventricular fibrillation zone.²⁰ We took no account of nonsustained ventricular arrhythmia or what we considered inappropriate therapy.

Statistical Analysis

To test the normality of the variables, the Kolmogorov-Smirnov statistic was used. Quantitative variables are given as mean (standard deviation) and median [interquartile range] in the case of non-normal distribution. Qualitative variables are expressed as absolute frequencies and percentage. The baseline characteristics in the 3 subgroups of patients were compared using chi-square for categorical variables and analysis of variance for quantitative variables, and the Bonferroni correction was used to adjust for multiple comparisons. The odds ratio (OR) for ventricular arrhythmias was calculated with chi-square. To determine the independent effect of variables on the incidence of ventricular arrhythmias, we constructed a logistic regression model including all the variables with a value of $P < .10$ in the univariate analysis. We constructed a Kaplan-Meier curve to compare the event-free survival rate by subgroups using the log rank test. We also analyzed mortality by subgroups using the log rank test. Statistical analysis was with SPSS 15.0 for Windows (SPSS Inc.; Chicago, Illinois, United States).

RESULTS

A total of 306 patients received a CRT-ICD implant between June 1999 and February 2012. Of these, we excluded 9 patients who died in the first 6 months, 5 patients who underwent heart transplantation in the same period, 21 lost to the follow-up, and 75 with inadequate echocardiographic follow-up (Figure 1). Hence, the study population consisted of 196 patients. We found no significant differences between the groups of patients included and excluded from the analysis in terms of the principle baseline characteristics: age ($P = .6$), sex ($P = .07$), New York Heart Association functional class ($P = .5$), baseline heart disease ($P = .08$), previous acute myocardial infarction ($P = .1$), atrial fibrillation ($P = .2$), secondary-prevention implantation ($P = .2$), QRS width ($P = .5$), and initial LVEF ($P = .08$). However, we did find a higher incidence of left branch bundle block among those patients included in the study than in those excluded (80.1% vs 66%; $P = .004$).

The baseline characteristics of patients in terms of type of echocardiographic response to CRT are in Tables 1 and 2.

Fewer SR patients had ischemic heart disease and previous acute myocardial infarction compared with NR patients. Fewer patients were receiving amiodarone treatment in the SR group than in the NR group. There were no differences between groups in terms of the administration of standard drugs for the treatment of heart failure or presence of chronic kidney failure or diabetes mellitus. The apical position of the left ventricle electrode appeared more frequently in the NR and R groups than in the SR group. Furthermore, in NR patients, the anterior position was more frequent than in R patients.

Of the 196 patients enrolled, we classified 51 as SR (26%), 63 as R (32%), and 82 as NR (42%) on the basis of the echocardiographic criteria defined above. The SR patients showed a statistically significant improvement of all echocardiographic parameters (LVEF, left ventricular end-systolic diameter, and left ventricular end-diastolic diameter) by comparison with the R and NR patients (Table 3).

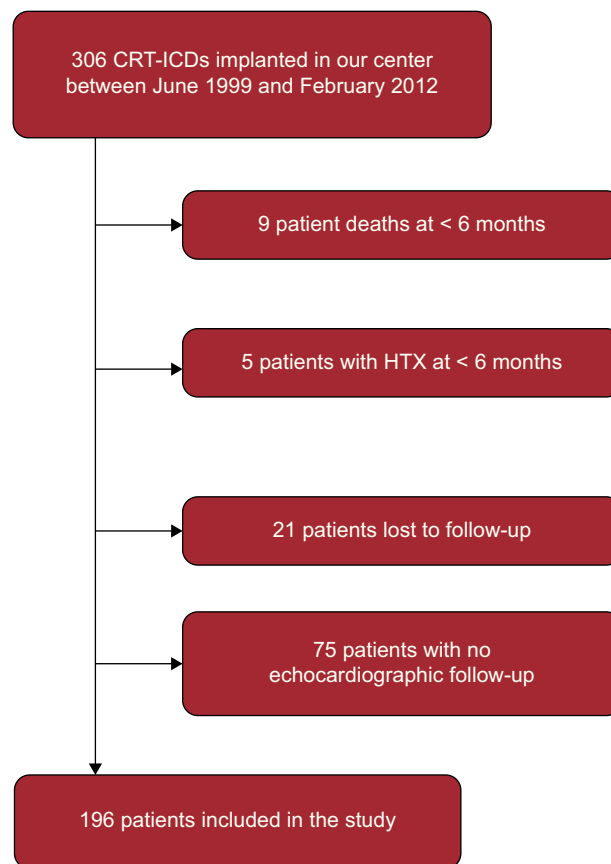


Figure 1. Flow-chart of the study. CRT-ICD, cardiac resynchronization therapy with implantable cardioverter-defibrillator; HTX, heart transplantation.

After a median follow-up of 30.1 [18.0-55.1] months, 37 patients (18.8%) had ventricular arrhythmias: 3 (5.9%) in the SR group, 14 (22.2%) in the R group, and 20 (24.4%) in the NR group (Table 4).

The probability of having a ventricular arrhythmia in the R group by comparison with the SR group was OR = 4.6 (95% confidence interval [95%CI], 1.2-16.9; $P = .015$). In other words, there was a 78.2% reduction in the risk of presenting ventricular arrhythmias in the SR group by comparison with the R group. In the NR group, the risk was OR = 5.2 (95%CI, 1.5-18.4; $P = .006$) by comparison with the SR group. This represents an 80.8% reduction in the risk of ventricular arrhythmias in the SR group. There were no significant differences in the risk of arrhythmias between the R and NR groups (OR = 1.1; 95%CI 0.7-1.7; $P = .8$).

During the follow-up, 40 patients died (20.4%). There were no significant differences between the subgroups in terms of echocardiographic response ($P = .92$).

Since we found no statistically significant differences between the R and NR groups in terms of the recurrence of arrhythmias, these groups were joined into one (non-SR) for the arrhythmia-free survival curve and univariate and multivariate analyses.

The Kaplan-Meier curve analysis for cumulative probability of ventricular arrhythmias (Figure 2) showed that SR patients had less risk of arrhythmic events ($P = .020$) than the other two groups analyzed together.

In univariate analysis (Table 5), female sex (OR = 0.8; 95%CI, 0.8-0.9), echocardiographic super-response (OR = 0.20; 95% CI, 0.06-0.70) and New York Heart Association functional class III-IV (OR = 0.4; 95%CI, 0.2-0.9) were the only statistically significant

Table 1
Baseline Clinical Characteristics of Patients According to Type of Response to Cardiac Resynchronization Therapy

	NR (n = 82)	R (n = 63)	SR (n = 51)
Age, mean SD, y	62.0 (9.7)	62.4 (10.6)	64.7 (8.3)
Men	72 (87.8)	55 (87.3)	40 (78.4)
Diabetes mellitus	28 (36.8)	23 (40.4)	13 (26.5)
NYHA functional class			
II	18 (22.0)	16 (25.4)	8 (15.7)
III	61 (74.4)	46 (73.0)	42 (82.4)
IV	3 (3.7)	1 (1.6)	1 (2.0)
Heart disease			
Idiopathic	37 (45.1)	34 (54.0)	32 (62.7)
Ischemic	45 (54.9)	29 (46.0)	17 (33.3) [*]
Other	0	0	2 (4)
Previous AMI	42 (51.2)	23 (36.5)	11 (21.6) [*]
Secondary-prevention implantation	16 (19.5)	16 (25.4)	5 (9.8)
Kidney failure (CrCl < 50 mL/min)	27 (35.5)	20 (35.1)	13 (26.5)
Drug treatment			
ACE inhibitors/ARB	72 (94.7)	49 (87.5)	45 (91.8)
Beta blockers	72 (94.7)	52 (91.2)	46 (93.9)
MRA	57 (75.0)	40 (70.2)	35 (71.4)
Antiarrhythmic treatment			
Amiodarone	34 (44.7)	17 (29.8)	13 (26.5) [*]
Sotalol	5 (6.6)	2 (3.5)	2 (4.1)

ACE, angiotensin converting enzyme; AMI, acute myocardial infarction; ARB, angiotensin receptor blockers; CrCl: creatinine clearance; MRA, mineralocorticoid receptor antagonists; NR, nonresponders; NYHA, New York Heart Association; R, responders; SD, standard deviation; SR, super-responders. Data are expressed No. (%) or mean (standard deviation).

^{*} $P < .05$ for the comparison between nonresponders and super-responders.

variables that protected against ventricular arrhythmias. In contrast, secondary-prevention ICD implantation (OR = 4.2; 95%CI, 1.9-9.4) and treatment with amiodarone (OR = 3.4; 95%CI, 1.6-7.3) were associated with greater risk of ventricular tachycardia during follow-up.

Finally, we conducted multivariate analysis. We could not include sex in the multivariate analysis because none of the women had recurrence of ventricular arrhythmia in the follow-up. In multivariate analysis, the lack of super-response to CRT (OR = 3.81; 95%CI, 1.04-13.93; $P = .043$), secondary-prevention device implantation (OR = 4.04; 95%CI, 1.52-10.75; $P = .005$), amiodarone treatment (OR = 2.47; 95%CI, 1.03-5.91; $P = .041$), and QRS >160 ms (OR = 2.39; 95%CI, 1.00-1.35; $P = .049$) were the only independent predictors of ventricular arrhythmias (Table 6).

DISCUSSION

The objective of this study was to compare the incidence of ventricular arrhythmias in patients receiving CRT with ICD implantations according to their echocardiographic response in terms of ventricular remodeling.

Currently, decision-making prior to ICD implantation is principally based on LVEF, and LVEF $\leq 35\%$ is generally accepted as the indication for implantation.²¹ Consequently, in patients with CRT-ICD, if LVEF has improved when ICD replacement is necessary, especially in SR patients, it may be worth considering substituting the ICD with a CRT-pacemaker, with the consequent saving in costs.

In SR-defined as patients whose LVEF is $\leq 45\%$ or at least twice their baseline measurement-we found that incidence of

Table 2
Electrocardiographic and Echocardiographic Characteristics Related to Device Implantation in Patients According to Type of Response to Cardiac Resynchronization Therapy

	NR (n = 82)	R (n = 63)	SR (n = 51)
QRS, mean (SD), ms	159.7 (24.6)	163.2 (23.2)	160.7 (19.3)
Conduction disturbance			
LBBB	62 (75.6)	52 (82.5)	43 (84.3)
RBBB	3 (3.7)	2 (3.2)	2 (3.9)
IVCD	13 (15.8)	4 (6.4)	2 (3.9)
PM	4 (4.9)	5 (7.9)	4 (7.8)
QRS, mean (SD), ms	159.7 (24.8)	162.55 (23.4)	160.7 (19.3)
AF	20 (24.4)	21 (33.3)	11 (21.6)
LVEF, mean (SD), %	27.7 (6.4) ^a	22.6 (5.7) ^b	26.1 (7.9)
MR grade 3-4	13 (16.5)	12 (20.0)	7 (14.3)
Epicardial electrode	3 (3.6)	0	2 (15.4)
Mid VI lead threshold, mean (SD), V	1.4 (0.9)	1.4 (0.99)	1.6 (1.3)
Electrode position			
PA projection			
Baseline	15 (21.7)	10 (20.4)	7 (14.9)
Mid	29 (42.0)	21 (42.9) ^b	34 (72.3) ^c
Apical	25 (36.2)	18 (36.7) ^b	6 (12.8) ^c
Lateral projection			
Anterior	18 (26.1) ^a	1 (2.0)	4 (8.5)
Lateral	16 (23.2)	17 (34.7)	19 (40.4)
Posterior	35 (50.7)	31 (63.3)	24 (51.1)

AF, atrial fibrillation; IVCD, intraventricular conduction delay; LBBB, left bundle branch block; LVEF, left ventricular ejection fraction; MR, mitral regurgitation; NR, nonresponders; PA, posteroanterior; PM, pacemaker rhythm; R, responders; RBBB, right bundle branch block; SD, standard deviation; SR, super-responders. Data are expressed No. (%) or mean (standard deviation).

^a $P < .05$ for the comparison between nonresponders and responders.

^b $P < .05$ for the comparison between responders and super-responders.

^c $P < .05$ for the comparison between nonresponders and super-responders.

Table 3
Comparison of Echocardiographic Parameters Between Super-responders, Responders and Nonresponders in the Follow-up

	NR (n = 82)	R (n = 63)	SR (n = 51)
LVEF, mean (SD)	26.1 (7.4) ^a	34.8 (6.9) ^b	47.1 (7.4) ^c
EDLVD, mean (SD)	69.1 (9.9) ^a	64.5 (8.8) ^b	56.9 (10.3) ^c
ESLVD, mean (SD)	58.3 (10.3) ^a	52.1 (8.9) ^b	43.4 (10.6) ^c
MR grade 3-7, %	15 (18.5)	11 (17.7) ^b	0 ^c

EDLVD, left ventricular end-diastolic diameter; ESLVD, left ventricular end-systolic diameter; LVEF, left ventricular ejection fraction; MR, mitral regurgitation; NR, nonresponders; R, responders; SD, standard deviation; SR, super-responders. Data are expressed No. (%) or mean (standard deviation).

^a $P < .05$ for the comparison between nonresponders and responders.

^b $P < .05$ for the comparison between responders and super-responders.

^c $P < .05$ for the comparison between nonresponders and super-responders.

ventricular arrhythmias was 5.9% after a median follow-up of 30.1 months [18.0-55.1 months].

The mechanisms of association between heart failure, left ventricular dilatation, and ventricular arrhythmias are complex. Empirical evidence indicates the degree of inverse remodeling is associated with the presence of ventricular arrhythmias. The Survival and Ventricular Enlargement, study reported that changes in ventricle size and function predicted ventricular extrasystole

Table 4

Incidence of ventricular arrhythmias according to the type of echocardiographic response

Ventricular arrhythmias	NR (n = 82)	R (n = 63)	SR (n = 51)
Yes (n = 37)	20 (24.4)	14 (22.2) ^a	3 (5.9%) ^b
No (n = 159)	62 (75.6)	49 (77.8) ^a	48 (94.1%) ^b

NR, nonresponders; R, responders; SR, super-responders.

Data are expressed No. (%).

^a $P < .05$ for the comparison between responders and super-responders.

^b $P < .05$ for the comparison between nonresponders and super-responders.

Table 5

Univariate analysis of Prediction of Ventricular Arrhythmias According to Clinical Variables

	OR (95% CI)	P
Age > 63 years	1.0 (0.7-1.5)	.8
Female sex	0.8 (0.8-0.9)	.005
NYHA functional class III-IV	0.4 (0.2-0.9)	.02
Heart disease (IHD/DCM)	1.6 (0.8-3.4)	.2
Previous AMI	1.7 (0.8-3.4)	.2
Secondary-prevention	4.2 (1.9-9.4)	<.005
LBBB	1.0 (0.4-2.5)	.9
QRS >160 ms	1.8 (0.9-3.6)	.1
AF	1.0 (0.5-2.3)	.9
LVEF > 25%	0.7 (0.3-1.5)	.4
MR grade 3-4	1.0 (0.4-2.5)	.9
Super-responder	0.2 (0.06-0.7)	.006
Amiodarone	3.4 (1.6-7.3)	.001

95%CI, 95% confidence interval; AF, atrial fibrillation; AMI, acute myocardial infarction; DCM, dilated cardiomyopathy; IHD, ischemic heart disease; LBBB, left bundle branch block; LVEF, left ventricular ejection fraction; MR, mitral regurgitation; NYHA, New York Heart Association; OR, odds ratio.

Table 6

Multivariate analysis of prediction of ventricular arrhythmias

	OR (95% CI)	P
Absence of echocardiographic super-response	3.81 (1.04-13.93)	.043
Secondary-prevention	4.04 (1.52-10.75)	.005
NYHA functional class II	2.30 (0.89-5.94)	.083
Amiodarone	2.47 (1.03-5.91)	.041
QRS >160 ms	2.39 (1.00-1.35)	.049

95%CI, 95% confidence interval; NYHA, New York Heart Association; OR, odds ratio.

and ventricular tachycardia.²² Treatment with drugs like beta blockers and angiotensin-converting enzyme inhibitors also reduces the incidence of ventricular arrhythmias and sudden death.²³

The role CRT plays in reducing ventricular arrhythmias is under debate. The CONTAK-CD study, which compared CRT-ICD with conventional ICD use in 490 patients with heart failure and in New York Heart Association functional class II-IV, found the incidence of appropriate shock after 6 months' follow-up was similar in both groups: 15% in CRT patients vs 16% in the conventional ICD group.²⁴

Similarly, the MIRACLE ICD study²⁵ found no differences between patients with CRT and patients with conventional ICD in terms of appropriate shock or antitachycardia pacing therapy.

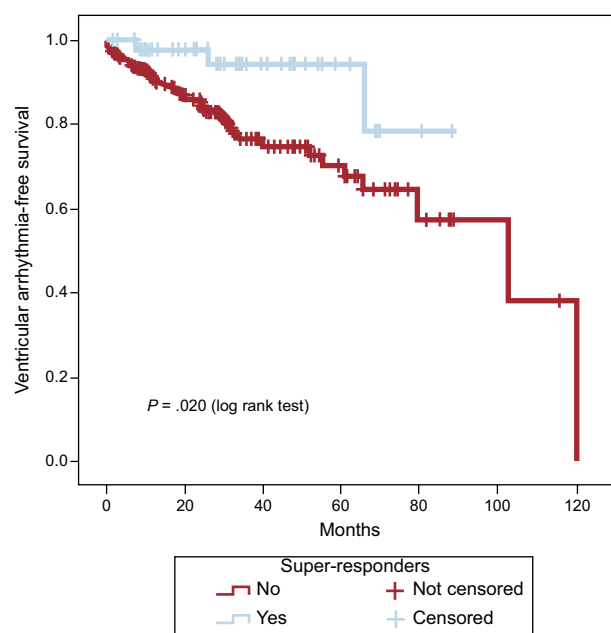


Figure 2. Kaplan-Meier curve for survival free of ventricular arrhythmias in super-responders by comparison with all other patients.

This study included 369 patients and follow-up was relatively short (6 months).

Benefits have been obtained in more long-term follow-up. In the extended CARE-HF study, with a 3-year follow-up, CRT therapy without ICD was associated with a fall in sudden death (4.3% per year in those without CRT vs 2.5% per year in those with CRT).⁷ It seems that with CRT, the reduction in arrhythmias occurs in the mid- or long-term. Analyzing the Kaplan-Meier curves, no separation appears until after 2 years' follow-up.

Theoretically, the reduction in ventricular arrhythmias due to CRT occurs because of improved cardiac remodeling, reduced myocardial ischemia and parietal stress, and a favorable change in the patient's neurohormonal status.²⁶ Moreover, ventricular arrhythmias are caused by re-entry in areas of myocardial fibrosis with slow conduction. Left ventricle pacing can stimulate these zones early or modify the depolarization vector so that the incidence of ventricular tachycardia is reduced.²⁷ Hence, the site of the left ventricle lead is of vital importance.

Notwithstanding, the degree of ventricular remodeling should predict the more important ventricular events. In 2009, Markowitz et al⁸ reported a reduction in the incidence of ventricular extrasystole, nonsustained ventricular tachycardia, and episodes of ventricular tachycardia or ventricular fibrillation in R patients.

Subsequently, Shahrzad et al¹⁰ reported that incidence of ventricular arrhythmias in patients receiving CRT-ICD fell in R patients—defined as patients with an improvement in LVEF of ≥ 5 points or reduction in end-diastolic diameter of at least 10%.

In a MADIT-CRT substudy,⁹ CRT-group patients were divided into 2 subgroups according to the degree of response (reduction of left ventricular end-systolic volume > 25% vs < 25%). The probability of having ventricular arrhythmia after 2 years' follow-up was lower in the R group (12%) than in patients with a conventional ICD (21%) or in NR patients (28%).

In our study, the incidence of ventricular arrhythmias in the SR group (5.9%) was lower than in the R (22.2%) and the NR (24.4%) groups. There was a significant reduction in the incidence of ventricular arrhythmia between SR and the other groups, with no differences between R and NR. Therefore, only patients with a

highly significant degree of echocardiographic remodeling after CRT had a clear reduction in the risk of recurrent ventricular arrhythmias in the follow-up. This could explain the heterogeneity of results in studies conducted to date, which generally use less restrictive cutoff points for ventricular remodeling to classify patients as R.

The presence of systolic dysfunction is associated with the risk of ventricular arrhythmias and sudden death. Patients classified as SR to CRT represent a special subgroup who may be in less advanced stages of heart disease and have better conserved ventricular geometry. In these patients, inverse ventricular remodeling and recovery of systolic function postimplantation are also associated with a reduced risk of arrhythmias—even though this risk does not completely disappear. Positive remodeling may occur, with improved ejection fraction that might even return to normal. However, areas of fibrosis or slow conduction can persist, which may be potential or real circuits for the development of ventricular arrhythmias.

In our study, we found 5.9% incidence of ventricular arrhythmia after a median follow-up of 30.1 [18.0–55.1] months despite super-response to CRT, which suggests that replacing the ICD with a pacemaker, when device replacement is necessary, may be unwise.

Limitations

This retrospective observational study was conducted in a single center over a very long period of time (13 years), so it was subject to uncontrolled factors.

We found treatment with amiodarone to be among the factors predicting ventricular arrhythmia. Clearly there is a bias, given that patients who had ventricular arrhythmias received this treatment more frequently.

We found no differences between the subgroups in terms of mortality. Aside from the fact that this was not the objective of the study, the follow-up may have been too short for CRT to show differences in survival.

CONCLUSIONS

We identified four independent predictors of ventricular arrhythmias in our follow-up of patients with CRT: QRS > 160 ms, secondary-prevention ICD implantation, treatment with amiodarone, and echocardiographic classification other than SR.

The SR patients had a clear reduction in incidence of ventricular arrhythmias by comparison with the other groups. Even so, a not inconsiderable percentage of SR patients continue to have arrhythmic episodes during follow-up. Therefore, for this group of patients, it seems unreasonable to cease ICD use when device replacement is due.

CONFLICTS OF INTEREST

None declared.

REFERENCES

- Cleland GF, Daubert JC, Erdmann E, Freemantle N, Gras D, Kappenberger L, et al. The effect of cardiac resynchronization on morbidity and mortality in heart failure. *N Engl J Med.* 2005;352:1539–49.
- Bristow MR, Saxon LA, Boehmer J, Krueger S, Kass DA, De Marco T, et al. Cardiac resynchronization therapy with or without an implantable defibrillator in advanced chronic heart failure. *N Engl J Med.* 2004;350:2140–50.
- Moss AJ, Hall WJ, Cannom DS, Klein H, Brown MW, Daubert JP, et al.; MADIT-CRT Trial Investigators. Cardiac-resynchronization therapy for the prevention of heart failure events. *N Engl J Med.* 2009;361:1329–38.
- Tang AS, Wells G, Talajic M, Arnold MO, Sheldon R, Connolly S, et al. Cardiac resynchronization therapy for mild to moderate heart failure. *N Engl J Med.* 2010;363:2385–95.
- Ypenburg C, Van Bommel R, Borleffs CJ, Bleeker GB, Boersma E, Schajij MJ, et al. Long term prognosis after cardiac resynchronization therapy is related to the extent of left ventricular reverse remodeling at midterm follow up. *J Am Coll Cardiol.* 2009;53:483–90.
- Solomon S, Foster E, Bourgoun M, Shah A, Vioria E, Brown MW, et al.; MADIT-CRT Investigators. Effect of cardiac resynchronization therapy on reverse remodeling and relation to outcome: multicenter automatic defibrillator implantation trial: cardiac resynchronization therapy. *Circulation.* 2010;122:985–92.
- Cleland JG, Daubert JC, Erdman E, Freemantle N, Gras D, Kappenberger L, et al. Longer-term effects of cardiac resynchronization therapy on mortality in heart failure [the Cardiac REsynchronization-Heart Failure (CARE-HF) trial extension phase]. *Eur Heart J.* 2006;27:1928–32.
- Markowitz S, Lewen J, Wiggenhorn C, Abraham WT, Stein KM, Iwai S, et al. Relationship of reverse anatomical remodeling and ventricular arrhythmias after cardiac resynchronization. *J Cardiovasc Electrophysiol.* 2009;20:293–8.
- Barshesnet A, Wang P, Moss A, Solomon S, Al-Ahmad A, McNitt S, et al. Reverse remodeling and the risk of ventricular tachyarrhythmias in the MADIT-CRT (Multicenter Automatic Defibrillator Implantation Trial-Cardiac Resynchronization Therapy). *J Am Coll Cardiol.* 2011;57:2416–23.
- Shahrzad S, Soleiman N, Taban S, Alizadeh A, Aslani A, Taavoosi A, et al. The effect of left ventricular (LV) remodeling on ventricular arrhythmia in cardiac resynchronization therapy (CRT-D) patients (antiarrhythmic effect of CRT). *Pacing Clin Electrophysiol.* 2012;35:592–7.
- Manfredi J, Al-Khatib S, Shaw L, Thomas L, Fogel R, Padanilam B, et al. Association between left ventricular ejection fraction post-cardiac resynchronization treatment and subsequent implantable cardioverter defibrillator therapy for sustained ventricular tachyarrhythmias. *Circ Arrhythm Electrophysiol.* 2013;6:257–64.
- Stahlberg M, Braunschweig F, Gadler F, Karlsson H, Linde C. Three year outcome of cardiac resynchronization therapy: a single center evaluation. *Pacing Clin Electrophysiol.* 2005;28:1013–7.
- Fish JM, Di Diego JM, Nesterenko V, Antzelevitch C. Epicardial activation of left ventricular wall prolongs QT interval and transmural dispersion of repolarization: implications for biventricular pacing. *Circulation.* 2004;109:2136–42.
- Arya A, Haghjoo M, Dehghani MR, Alasti M, Alizadeh H, Kazemi B, et al. Effect of cardiac resynchronization therapy on the incidence of ventricular arrhythmias in patients with an implantable cardioverter-defibrillator. *Heart Rhythm.* 2005;2:1094–8.
- Medina-Ravell VA, Lankipalli RS, Yan GX, Antzelevitch C, Medina-Malpica NA, Medina-Malpica OA, et al. Effect of epicardial or biventricular pacing to prolong QT interval and increase transmural dispersion of repolarization: does resynchronization therapy pose a risk for patients predisposed to long QT or torsade de pointes? *Circulation.* 2003;107:740–6.
- Vardas PE, Auricchio A, Blanc JJ, Daubert JC, Drexler H, Ector H, et al.; Developed in Collaboration with the European Heart Rhythm Association. Guidelines for cardiac pacing and cardiac resynchronization therapy: The Task Force for Cardiac Pacing and Cardiac Resynchronization Therapy of the European Society of Cardiology. *Eur Heart J.* 2007;28:2256–95.
- Yu CM, Fung WH, Lin H, Zhnag Q, Sanderson J, Lau C. Predictors of left ventricular reverse remodelling after cardiac resynchronization therapy for heart failure secondary to idiopathic dilated or ischemic cardiomyopathy. *Am J Cardiol.* 2003;91:684–8.
- Wilkoﬀ BL, Williamson BD, Stern RS, Moore S, Lu F, Lee S, et al. Strategic programming of detection and therapy parameters in implantable cardioverter-defibrillators reduces shocks in primary prevention patients: results from the PREPARE (Primary Prevention Parameters Evaluation) study. *J Am Coll Cardiol.* 2008;52:541–50.
- Moss A, Schuger C, Beck C, Brown M, Cannom D, Daubert J, et al.; MADIT-RIT Trial Investigators. Reduction in inappropriate therapy and mortality through ICD programming. *N Engl J Med.* 2012;367:2275–83.
- Wathen MS, DeGroot PJ, Sweeney MO, Stark AJ, Otterness MF, Adkinson WO, et al.; PainFREE Rx II Investigators. Prospective randomized multicenter trial of empirical antitachycardia pacing versus shocks for spontaneous rapid ventricular tachycardia in patients with implantable cardioverter defibrillators: Pacing Fast Ventricular Tachycardia Reduces Shock Therapies (PainFREE Rx II) trial results. *Circulation.* 2004;110:2591–6.
- Tracy CM, Epstein AE, Darbar D, DiMarco JP, Dunbar SB, Estes 3rd NA, et al. 2012 ACCF/AHA/HRS focused update of the 2008 guidelines for device-based therapy of cardiac rhythm abnormalities. A report of the American College of Cardiology Foundation/American Heart Association Task Force on Practice Guidelines and the Heart Rhythm Society. *Circulation.* 2012;126:1784–800.
- St John Sutton M, Lee D, Rouleau JL, Goldman S, Plappert T, Braunwald E, et al. Left ventricular remodeling and ventricular arrhythmias after myocardial infarction. *Circulation.* 2003;107:2577–82.
- Packer M, Fowler MB, Roecker EB, Coats A, Katus H, Krum H, et al. Effect of carvedilol on the morbidity of patients with severe chronic heart failure: results of the carvedilol prospective randomized cumulative survival (COPERNICUS) study. *Circulation.* 2002;106:2194–9.

24. Higgins SL, Hummel JD, Niazi IK, Giudici MC, Worley SJ, Saxon LA, et al. Cardiac resynchronization therapy for the treatment of heart failure in patients with intraventricular conduction delay and malignant ventricular tachyarrhythmias. *J Am Coll Cardiol.* 2003;42:1454–9.
25. Young JB, Abraham WT, Smith AL, Leon AR, Lieberman R, Wilkoff B, et al.; Multicenter InSync ICD Randomized Clinical Evaluation (MIRACLE ICD) Trial Investigators. Combined cardiac resynchronization and implantable cardioversion defibrillation in advanced chronic heart failure: the MIRACLE ICD Trial. *JAMA.* 2003;289:2685–94.
26. Popovic ZB, Grimm RA, Perlic G, Chinchoy E, Geraci M, Sun J, et al. Noninvasive assesment of cardiac resynchronization therapy for congestive heart failure using myocardial strain and left ventricular peak power as parameters of myocardial synchrony and function. *J Cardiovasc Electrophysiol.* 2002;13:1203–8.
27. Kowal RC, Wasmund SL, Smith ML, Sharma N, Carayannopoulos GN, Le B, et al. Biventricular pacing reduces the induction of monomorphic ventricular tachycardia. A potential mechanism for arrhythmia suppresion. *Heart Rhythm.* 2004;1:295–300.