

Original article

Timing of multivessel revascularization in stable patients with STEMI: a systematic review and network meta-analysis

Felix Voll,^a Constantin Kuna,^a Maria Scalamogna,^{a,b} Thorsten Kessler,^{a,c} Sebastian Kufner,^a Tobias Rheude,^a Hendrik B. Sager,^{a,c} Erion Xhepa,^a Jens Wiebe,^a Michael Joner,^{a,c} Robert A. Byrne,^{d,e} Heribert Schunkert,^{a,c} Gjin Ndrepepa,^a Barbara E. Stähli,^f Adnan Kastrati,^{a,c} and Salvatore Cassese^{a,*}

^aKlinik für Herz- und Kreislauferkrankungen, Deutsches Herzzentrum München, Technische Universität München, Munich, Germany

^bDepartment of Advanced Biomedical Sciences, University of Naples Federico II, Naples, Italy

^cDeutsches Zentrum für Herz-Kreislauf-Forschung (DZHK), Munich, Germany

^dCardiovascular Research Institute Dublin and Department of Cardiology, Mater Private Network, Dublin, Ireland

^eSchool of Pharmacy and Biomolecular Sciences, Royal College of Surgeons of Ireland University of Medicine and Health Sciences, Dublin, Ireland

^fDepartment of Cardiology, University Heart Center, University Hospital Zurich, Zurich, Switzerland

Article history:

Received 21 March 2024

Accepted 10 June 2024

Keywords:

Coronary artery disease

Meta-analysis

Multivessel

Myocardial infarction

Percutaneous coronary intervention

ABSTRACT

Introduction and objectives: Multivessel percutaneous coronary intervention (MV-PCI) is recommended in patients with ST-segment elevation myocardial infarction (STEMI) and multivessel coronary artery disease (CAD) without cardiogenic shock. The present network meta-analysis investigated the optimal timing of MV-PCI in this context.

Methods: We pooled the aggregated data from randomized trials investigating stable STEMI patients with multivessel CAD treated with a strategy of either MV-PCI or culprit vessel-only PCI. The primary outcome was all-cause death. The main secondary outcomes were cardiovascular death, myocardial infarction, and unplanned ischemia-driven revascularization.

Results: Among 11 trials, a total of 10 507 patients were randomly assigned to MV-PCI (same sitting, n = 1683; staged during the index hospitalization, n = 3460; staged during a subsequent hospitalization within 45 days, n = 3275) or to culprit vessel-only PCI (n = 2089). The median follow-up was 18.6 months. In comparison with culprit vessel-only PCI, MV-PCI staged during the index hospitalization significantly reduced all-cause death (risk ratio, 0.73; 95%CI, 0.56-0.92; P = .008) and ranked as possibly the best treatment option for this outcome compared with all other strategies. In comparison with culprit vessel-only PCI, a MV-PCI reduced cardiovascular mortality without differences dependent on the timing of revascularization. MV-PCI within the index hospitalization, either in a single procedure or staged, significantly reduced myocardial infarction and unplanned ischemia-driven revascularization, with no significant difference between each other.

Conclusions: In patients with STEMI and multivessel CAD without cardiogenic shock, multivessel PCI within the index hospitalization, either in a single procedure or staged, represents the safest and most efficacious approach. The different timings of multivessel PCI did not result in any significant differences in all-cause death.

This study is registered at PROSPERO (CRD42023457794).

© 2024 Sociedad Española de Cardiología. Published by Elsevier España, S.L.U. This is an open access article under the CC BY license (<http://creativecommons.org/licenses/by/4.0/>).

Tiempos para la revascularización multivaso en pacientes estables con IAMCEST: revisión sistemática y metanálisis en red

RESUMEN

Introducción y objetivos: La intervención coronaria percutánea multivaso (ICPm) se recomienda para pacientes con infarto agudo de miocardio con elevación del segmento ST (IAMCEST) y enfermedad coronaria multivaso (ECMV) sin shock cardiogénico. El presente metanálisis en red investiga el momento óptimo para la ICPm en este contexto.

Métodos: Se agruparon los datos agregados de ensayos aleatorizados que estudiaron a pacientes con IAMCEST estable y ECMV tratados con una estrategia de ICPm o ICP solo del vaso culpable. El objetivo primario fue la muerte por cualquier causa. Los objetivos secundarios fueron la muerte cardiovascular, el infarto de miocardio y la revascularización no planificada por isquemia.

Palabras clave:

Enfermedad coronaria

Metanálisis

Multivaso

Infarto de miocardio

Intervención coronaria percutánea

* Corresponding author.

E-mail address: cassese@dhm.mhn.de (S. Cassese).

<https://doi.org/10.1016/j.rec.2024.06.002>

1885-5857/© 2024 Sociedad Española de Cardiología. Published by Elsevier España, S.L.U. This is an open access article under the CC BY license (<http://creativecommons.org/licenses/by/4.0/>).

Resultados: Se aleatorizó a 10.507 pacientes de 11 ensayos a ICPm (misma sesión, $n = 1.683$; durante la hospitalización índice, $n = 3.460$; durante una hospitalización posterior en un plazo de 45 días, $n = 3.275$) o a ICP solo del vaso culpable ($n = 2.089$). La mediana de seguimiento fue de 18,6 meses. En comparación con la ICP solo del vaso culpable, la ICPm durante la hospitalización inicial redujo significativamente la mortalidad por cualquier causa (*risk ratio* = 0,73; IC95%, 0,56-0,92; $p = 0,008$) y se clasificó como la mejor opción de tratamiento para este resultado en comparación con todas las demás estrategias. En comparación con la ICP solo del vaso culpable, una ICPm redujo la mortalidad cardiovascular sin diferencias dependientes del momento de la revascularización. Una ICPm durante la hospitalización índice, ya fuera en un único procedimiento o escalonada, redujo significativamente los infartos de miocardio y las revascularizaciones no planificadas por isquemia y sin diferencias significativas estos.

Conclusiones: En pacientes con IAMCEST y ECMV sin *shock* cardiogénico, una ICPm durante la hospitalización índice, ya sea en un único procedimiento o de manera escalonada, es el abordaje más seguro y eficaz. Los distintos momentos de realización de la ICPm no mostraron diferencias significativas en muerte por todas las causas.

El estudio está registrado en PROSPERO (CRD42023457794).

© 2024 Sociedad Española de Cardiología. Publicado por Elsevier España, S.L.U. Este es un artículo Open Access bajo la CC BY licencia (<http://creativecommons.org/licenses/by/4.0/>).

Abbreviations

CAD: coronary artery disease
MI: myocardial infarction
MV-PCI: multivessel percutaneous coronary interventions
RR: risk ratio
STEMI: ST-segment elevation myocardial infarction

INTRODUCTION

Approximately half of all patients with myocardial infarction (MI) have multivessel coronary artery disease (CAD), with at least 1 other significant stenosis in a nonculprit coronary vessel.¹ Multivessel CAD in MI patients is associated with a higher risk of adverse cardiovascular events and mortality.^{2,3} For this reason, there is convincing evidence to recommend multivessel percutaneous coronary intervention (MV-PCI) in stable patients (ie, those without cardiogenic shock) with ST-segment elevation myocardial infarction (STEMI) and multivessel CAD.⁴ The recently released European guidelines for the management of patients with acute coronary syndrome (ACS) recommend a strategy of MV-PCI in STEMI patients presenting with multivessel CAD in the absence of cardiogenic shock.⁵ However, unlike previous European guidelines for the management of patients with STEMI,⁶ current guidelines suggest that MV-PCI can be performed either during the index procedure (same sitting) or staged during a subsequent hospitalization within 45 days of the index procedure.⁵

Recent randomized trials⁷⁻⁹ allow for a more comprehensive evaluation of the optimal timing of MV-PCI in patients with STEMI without cardiogenic shock. In contrast, previous observations did never focus on this specific topic, rather on the clinical superiority of MV-PCI as compared with a PCI of the culprit lesion only.^{10,11} Guidance of the multivessel treatment strategy in stable patients with STEMI has significant implications for clinical practice, encompassing logistical considerations and the diverse antithrombotic therapies employed in these patients. Therefore, we designed the present study to evaluate the clinical outcomes of patients with STEMI and multivessel CAD without cardiogenic shock according to the timing of MV-PCI.

METHODS

Data sources and outcomes

We searched electronic scientific databases, scientific abstracts of major cardiovascular conferences, and clinical trial registration websites from the inception of each database through August 2023 for randomized trials including hemodynamically stable STEMI patients with multivessel CAD undergoing either MV-PCI or culprit vessel-only PCI. All eligible studies were screened for further citations by reviewing the reference lists. Further information on the search strategy, study selection, data abstraction and quality assessment is provided in the supplementary methods (supplementary data).

The primary outcome was all-cause death. The main secondary outcomes were cardiovascular death, MI, and unplanned ischemia-driven revascularization. Other outcomes analyzed were major bleeding, stroke, and acute kidney injury. We included all endpoints occurring up to the maximum follow-up duration available as per definitions reported in the original trial protocols.

Data synthesis and statistical analysis

Before performing the statistical analysis, 2 investigators independently assessed the quality of each study using the Risk of Bias 2 (RoB 2) tool.¹² Means for continuous variables and percentages for categorical variables were displayed as exploratory analyses for baseline features of participants enrolled in each included study. The weighted median follow-up duration was calculated based on the sample size of each individual study. Risk ratios (RR) with 95% confidence intervals (95%CI) and P values $< .05$ were used to compare outcomes of interest between treatment groups for all analyses.

First, we performed a frequentist network meta-analysis to generate direct and indirect evidence between interventions according to the definition of intention-to-treat analyses in the original trials. Second, we performed an exploratory pairwise meta-analysis, comparing a strategy of MV-PCI during the index hospitalization either in the same sitting or staged (MV-PCI during the index hospitalization group) vs a strategy of MV-PCI during a subsequent hospitalization within 45 days or a culprit vessel-only PCI (control group). Further details concerning the statistical

framework of the network and pairwise meta-analyses are reported in the supplementary methods (supplementary data).

This study is reported in compliance with the PRISMA statement (table 1 of the supplementary data).¹³ All analyses were performed using the packages netmeta, meta, and metafor with R version 4.1.3 (R Foundation for Statistical Computing, Austria). No extramural funding was used to support this work. This study did not require ethics approval. The study is registered at PROSPERO (CRD42023457794). The data supporting the findings of this study are available from the corresponding author upon reasonable request.

RESULTS

Eligible and included studies

The flow diagram for the trial selection process is shown in figure 1 of the supplementary data. After application of the inclusion/exclusion criteria, 11 trials, all published as full-length manuscripts,^{7-9,14-21} were included in the meta-analysis. There was no disagreement requiring consultation with a third reviewer. In the selected trials, a total of 10 507 patients with MI and multivessel CAD were randomly assigned to MV-PCI (same sitting, $n = 1683$; staged during the index hospitalization, $n = 3460$; staged during a subsequent hospitalization within 45 days, $n = 3275$) or to culprit vessel-only PCI ($n = 2089$). The main characteristics of the included trials are shown in table 1. All except 1 trial¹⁵ had a multicenter design and predominantly included patients with stable STEMI and multivessel CAD with an indication for PCI. The BioVasc trial⁷ and the FIRE trial⁹ included patients with STEMI or non-STEMI. In addition, the BioVasc trial included 127 patients with unstable angina (1.2% of the overall population included in this analysis).

In the multivessel PCI group, the revascularization of nonculprit lesions was mostly staged during the index hospitalization. In the COMPLETE trial²¹, the largest trial among those included in the present analysis, the operators were asked to specify whether they intended to perform a PCI of nonculprit lesions during the index hospitalization or in a subsequent hospitalization in case the patients were to be assigned to a MV-PCI strategy.²² One trial had a 3-arm design.¹⁵ In 4 out of 11 trials,^{9,17,20,21} the decision to perform PCI of nonculprit lesions in the MV-PCI group was guided by physiology, while in the remaining trials the decision was based on angiographic criteria of lesion severity. In 8 trials,^{7-9,16-18,20,21} prasugrel and ticagrelor were used in combination with aspirin as the dual antiplatelet therapy regimen for a period ranging between 6 and 12 months.

The baseline characteristics of the patients included in the original trials are shown in table 2. The median age was 64.4 [interquartile range, 62-65] years, more than two-thirds of the patients were male, roughly one-fifth had type 2 diabetes, and nearly 50% of them had hypertension at the time of enrolment in the primary trials. Almost half of the patients were current or former smokers, and a prior MI was reported in less than 10% of participants. Approximately 40% of the included patients presented with anterior MI. The weighted median follow-up available for this analysis was 18.6 months.

Clinical outcomes

All trials had sufficient statistical power for composite clinical outcomes, which included all-cause death, MI, and/or unplanned ischemia-driven revascularization in most cases. Four trials had available outcomes data beyond 24 months.^{15,17,18,21} Outcome

definitions are reported in table 2 of the supplementary data, and the Risk of Bias interstudy is presented in figure 2 of the supplementary data. All patients were available for assessment of outcomes of interest. The complete ranking of revascularization strategies for each outcome of interest is reported in the table 3 of the supplementary data.

Primary outcome

The network of treatment strategies for all-cause death, the primary outcome, is reported in figure 3 of the supplementary data. All-cause death occurred in 528 patients (5.0%). Compared with culprit vessel-only PCI, a strategy of MV-PCI staged during the index hospitalization significantly reduced all-cause death (RR, 0.73; 95%CI, 0.56-0.92; $P = .008$), whereas a strategy of MV-PCI performed during the same sitting (RR, 0.78; 95%CI, 0.53-1.14) or staged during a subsequent hospitalization within 45 days did not (RR, 0.76; 95%CI, 0.54-1.06). These results are reported in the figure 1 and figure 2A,B. The results remained consistent after considering the different follow-up durations of the included studies. Compared each other, MV-PCI strategies showed no significant differences or statistical heterogeneity ($I^2 = 0\%$). MV-PCI staged during the index hospitalization ranked as possibly the best option to prevent all-cause death compared with all other strategies ($P = .78$). The node-splitting method did not reveal significant disagreement between direct and indirect evidence (figure 2B and table 4 of the supplementary data). A small-study effect and a significant publication bias could be rejected both visually (figure 4 of the supplementary data) and statistically ($P = .41$). The league of risk estimates for the primary and the secondary outcomes from network meta-analysis is reported in the table 5 of the supplementary data.

Main secondary outcomes

Cardiovascular death occurred in 292 patients (3.0%, data available for 9780 patients; figure 3A,B). Compared with culprit vessel-only PCI, all MV-PCI strategies significantly reduced cardiovascular death: same sitting (RR, 0.54; 95%CI, 0.31-0.95; $P = .03$); staged during the index hospitalization (RR, 0.59; 95%CI, 0.41-0.84; $P = .004$); and staged during a subsequent hospitalization within 45 days (RR, 0.60; 95%CI, 0.38-0.96; $P = .03$). Compared each other, MV-PCI strategies showed no significant differences or statistical heterogeneity ($I^2 = 0\%$). MV-PCI during the same sitting ($P = .75$) ranked as possibly the best option to prevent cardiovascular death.

MI occurred in 559 patients (5.3%; figure 4A,B). Compared with culprit vessel-only PCI, a strategy of MV-PCI during the same sitting (RR, 0.39; 95%CI, 0.25-0.60; $P < .001$) or staged during the index hospitalization (RR, 0.67; 95%CI, 0.50-0.91; $P = .001$) significantly reduced MI, whereas a strategy of MV-PCI staged during a subsequent hospitalization within 45 days did not (RR, 0.99; 95%CI, 0.70-1.41). Compared each other, a strategy of MV-PCI during the same sitting was superior to a strategy of MV-PCI staged during the index hospitalization (RR, 0.58, 95%CI, 0.38-0.87; $P = .009$) and to a strategy of MV-PCI staged during a subsequent hospitalization within 45 days (RR, 0.39; 95%CI, 0.27-0.58; $P < .001$). There was no statistical heterogeneity ($I^2 = 0\%$). MV-PCI during the same sitting ($P = .99$) ranked as possibly the best option to prevent MI.

Unplanned ischemia-driven revascularization occurred in 872 patients (8.3%; figure 5A,B). In comparison with culprit vessel-only PCI, a strategy of MV-PCI during the same sitting (RR, 0.37; 95%CI, 0.17-0.82; $P = .015$) or staged during the index hospitalization (RR, 0.34; 95%CI, 0.17-0.67; $P = .002$) significantly

Table 1
Main features of the trials included in the study

Trial	Multicenter	Enrolment period	Comparison		Main inclusion criteria	Definition of multivessel CAD	Primary endpoint	Available follow-up (months)
BioVasc ⁷	Yes	June 2018-October 2021	Same sitting MV-PCI (n = 764)	Staged MV-PCI (subsequent, n = 761)	Age 18-85 y; STEMI or NSTEMI; multivessel CAD with a clearly identifiable culprit lesion	≥ 2 or more coronary arteries with a diameter ≥ 2.5 mm and ≥ 70% stenosis by visual estimation or positive coronary physiology testing	All-cause death, any MI, unplanned ischemia-driven revascularization, stroke	12
CompareAcute ²⁰	Yes	July 2011-October 2015	Staged MV-PCI (index, n = 295)*	Culprit vessel-only PCI (n = 590)	Age 18-85 y; STEMI; ≤ 12 h after symptom onset; indication for primary PCI; multivessel CAD deemed appropriate for PCI by the interventional cardiologist	Culprit artery plus nonculprit artery with ≥ 50% angiographic diameter stenosis	All-cause death, nonfatal MI, any revascularization, stroke	12
COMPLETE ²¹	Yes	February 2013-March 2017	Staged MV-PCI (index, n = 2016)*	Staged MV-PCI (subsequent, n = 2025)	STEMI; multivessel CAD	> 1 angiographically significant (≥ 70% stenosis of the vessel diameter on visual estimation or > 50 to 69% stenosis accompanied by a fractional flow reserve measurement of ≤ 0.80) nonculprit artery amenable to successful PCI, located in a vessel with a diameter ≥ 2.5 mm and not stented during the index PCI of culprit artery	Cardiovascular death or reinfarction; cardiovascular death, reinfarction, or ischemia-driven revascularization	36
CvLPRIT ¹⁸	Yes	May 2011-May 2013	Same sitting MV-PCI (n = 150)	Culprit vessel-only PCI (n = 146)	Suspected or proven MI (angiographic confirmation of culprit artery occlusion); < 12 h after symptom onset; eligible for primary PCI; multivessel CAD	Culprit artery plus ≥ 1 nonculprit artery (main branch or side branch) with ≥ 1 angiographically significant lesion (> 50% diameter stenosis in 2 planes or > 70% in 1 plane); ≥ 2 mm diameter suitable for stent implantation	All-cause death, recurrent MI, heart failure, ischemia-driven revascularization by PCI/CABG	66
DANAMI-3-PRIMULTI ¹⁷	Yes	March 2011-February 2014	Staged MV-PCI (index, n = 314)*	Culprit vessel-only PCI (n = 313)	Chest pain < 12 h after symptom onset and ST-segment elevation > 0.1 mV in ≥ 2 contiguous leads; successful primary PCI of the culprit lesion (defined TIMI flow ≥ 2 and < 30% residual stenosis); multivessel CAD	≥ 1 nonculprit artery with > 50% angiographic diameter stenosis	All-cause death, recurrent MI, ischemia-driven revascularization of nonculprit artery	27

Table 1 (Continued)

Main features of the trials included in the study

Trial	Multicenter	Enrolment period	Comparison	Main inclusion criteria	Definition of multivessel CAD	Primary endpoint	Available follow-up (months)	
FIRE ⁹	Yes	July 2019-October 2021	Staged MV-PCI (index, n=720)*	Culprit vessel-only PCI (n=725)	Age \geq 75 y; STEMI or NSTEMI with successful PCI of the culprit lesion; multivessel CAD	\geq 1 nonculprit lesion, located in a vessel with a diameter \geq 2.5 mm and a visually estimated diameter stenosis of \geq 50 to 99%	Death, MI, stroke, or ischemia-driven coronary revascularization	12
Hamza M, et al. ¹⁹	Yes	June 2013-February 2014	Staged MV-PCI (index, n=50)	Staged MV-PCI (subsequent, n=50)	Diabetes mellitus; STEMI < 12 h after symptom onset; eligible for primary PCI; multivessel CAD	Culprit artery plus nonculprit artery with \geq 80% angiographic diameter stenosis	All-cause death; recurrent and ischemia-driven revascularization	6
HELP AMI ¹⁴	Yes	N/R	Same sitting MV-PCI (n=52)	Staged MV-PCI (subsequent, n=17)	Chest pain < 12 h before hospital admission; ST-segment elevation > 0.1 mV in \geq 2 contiguous leads (peripheral) or > 0.2 mV in \geq 2 contiguous precordial leads; multivessel CAD	Culprit artery plus 1-3 lesions in a major nonculprit artery	Repeat revascularization	12
MULTISTARS AMI ⁸	Yes	October 2016-June 2022	Same sitting MV-PCI (n=418)	Staged MV-PCI (subsequent, n=422)	STEMI < 24 h after symptom onset; eligible for primary PCI; multivessel CAD	Stenosis \geq 70% in at least 2 projections in nonculprit artery with a lumen diameter \geq 2.25 and \leq 5.75 mm	All-cause death, nonfatal MI, stroke, unplanned ischemia-driven revascularization, hospitalization for heart failure	12
Politi L, et al. ¹⁵	No	January 2003-December 2007	Same sitting MV-PCI (n=65)/ Staged MV-PCI (index, n=65)	Culprit vessel-only PCI (n=84)	Chest pain lasting > 30 min and < 12 h before hospital admission; ST-segment elevation > 0.1 mV in \geq 2 contiguous leads (peripheral) or > 0.2 mV in \geq 2 contiguous precordial leads; multivessel CAD	> 70% stenosis of \geq 2 coronary arteries or major branches by visual estimation	All-cause death, in-hospital death, reinfarction, rehospitalization for ACS, repeat coronary revascularization by PCI/CABG	30
PRAMI ¹⁶	Yes	April 2008-January 2013	Same sitting MV-PCI (n=234)	Culprit vessel-only PCI (n=231)	STEMI; multivessel CAD	\geq 1 nonculprit artery with \geq 50% stenosis deemed to be treated by PCI	All-cause death, any MI, unplanned ischemia-driven revascularization, stroke	23

CABG, coronary artery by-pass graft; CAD, coronary artery disease; MI, myocardial infarction; MV-PCI, multivessel percutaneous coronary intervention; N/A, not applicable; N/R, not reported; NSTEMI, non-ST-segment elevation acute coronary syndrome; PCI, percutaneous coronary intervention; STEMI, ST-segment elevation myocardial infarction; TIMI, Thrombolysis in Myocardial Infarction.

* Physiology-guided.

Table 2
Main characteristics of the patients enrolled among the trials included in the study

Trial	Patients, n	Age, years	Male, %	Diabetes mellitus, %	Hypertension, %	Smoking, %	Prior MI, %	Anterior MI, %
BioVasc ⁷	1525	65.5	77.8	11.0	53.6	51.6	10.3	36.5
CompareAcute ²⁰	885	61.5	77.1	15.4	47.2	46.1	7.9	35.1
COMPLETE ²¹	4041	62.0	79.8	19.5	49.7	39.7	7.4	34.3
CvLPRIT ¹⁸	296	64.8	81.0	13.6	36.6	30.6	4.0	35.8
DANAMI-3-PRIMULTI ¹⁷	627	63.5	81.1	11.3	44.0	49.6	7.0	34.6
FIRE ⁹	1445	80.5	63.4	32.0	82.0	8.5	15.2	45.6
Hamza M, et al. ¹⁹	100	54.3	84.0	50.0	31.0	75.0	8.0	47.0
HELP AMI ¹⁴	69	64.4	87.0	18.8	42.0	71.0	N/R	53.6
MULTISTARS AMI ⁸	840	65.0	87.8	15.6	52.3	50.8	5.7	40.4
Politi L, et al. ¹⁵	214	65.3	77.5	19.1	57.9	N/R	N/R	44.0
PRAMI ¹⁶	465	62.0	78.0	17.8	40.2	51.8	7.5	33.5

MI, myocardial infarction; N/R, not reported; PCI, percutaneous coronary intervention.

Overall proportions and means are reported. The column headed "Prior MI" presents the proportion of patients with previous myocardial infarction. The column headed "Anterior MI" presents the proportion of patients with anterior myocardial infarction at the time of the index procedure.

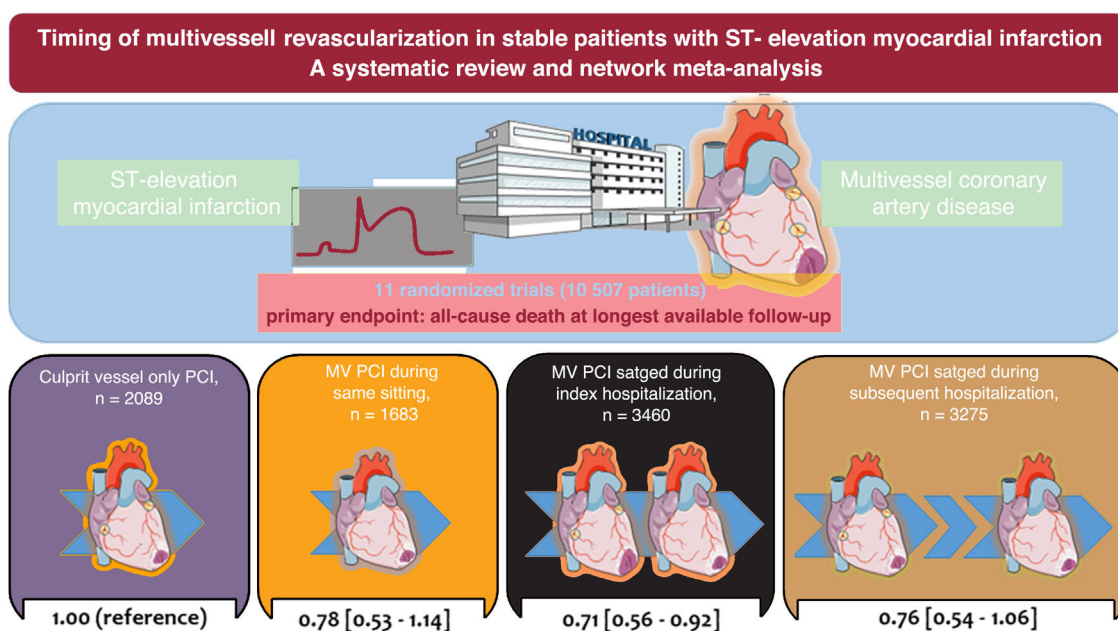


Figure 1. Central illustration. The pooled risk ratios and 95%CI for all-cause death were derived from a network meta-analysis. 95%CI, 95% confidence intervals.

reduced unplanned ischemia-driven revascularization, whereas a strategy of MV-PCI staged during a subsequent hospitalization within 45 days did not (RR, 1.00; 95%CI, 0.38-2.62). Compared each other, the MV-PCI strategies showed no significant differences, but did show significant statistical heterogeneity ($I^2 = 85.3\%$). The node-split analysis revealed that the significant inconsistency between direct and indirect estimates was largely attributable to the comparison between same sitting MV-PCI and culprit vessel-only PCI. MV-PCI staged during the index hospitalization ($P = .86$) ranked as possibly the most effective options to prevent unplanned ischemia-driven revascularization.

Other outcomes

Major bleeding occurred in 252 patients (2.6%, data available for 9759 patients). The revascularization strategies showed no significant differences or statistical heterogeneity ($I^2 = 9\%$) for this

outcome. MV-PCI during the same sitting ($P = .82$) ranked as possibly the most effective option to prevent major bleeding (figure 5 of the supplementary data).

Stroke occurred in 134 patients (1.4%, data available for 9759 patients). The revascularization strategies showed no significant differences for this outcome or statistical heterogeneity ($I^2 = 0\%$). A culprit vessel-only PCI ($P = .70$) and a same sitting MV-PCI ($P = .69$) ranked as possibly the most effective options to prevent stroke.

Acute kidney injury occurred in 353 patients (4.4%, data available for 8028 patients). Compared with culprit vessel-only PCI, the revascularization strategies showed no significant differences or statistical heterogeneity ($I^2 = 9\%$) for this outcome. Of note, compared with a strategy of MV-PCI staged during the index hospitalization, MV-PCI staged during a subsequent hospitalization within 45 days reduced significantly acute kidney injury (RR, 0.58; 95%CI, 0.35-0.97; $P = .040$) and ranked as possibly the most effective options to prevent this adverse outcome ($P = .84$).

All-cause death

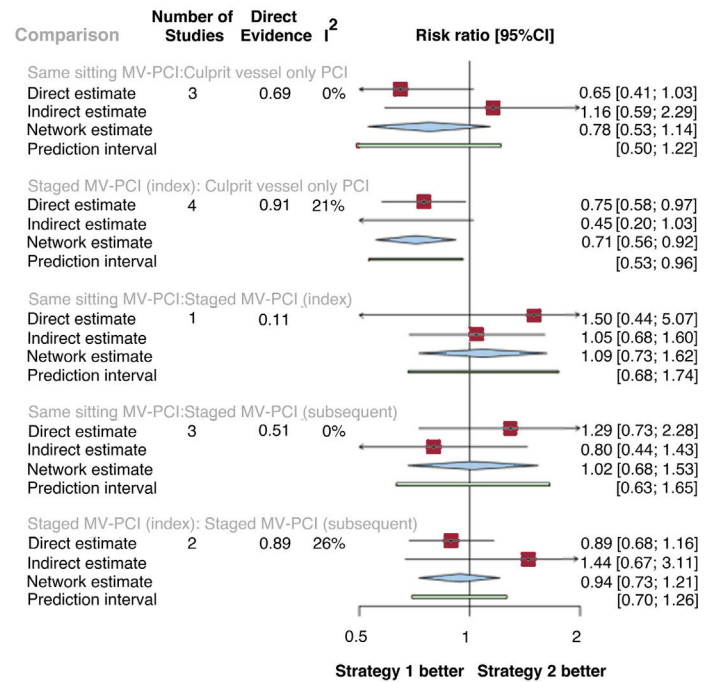
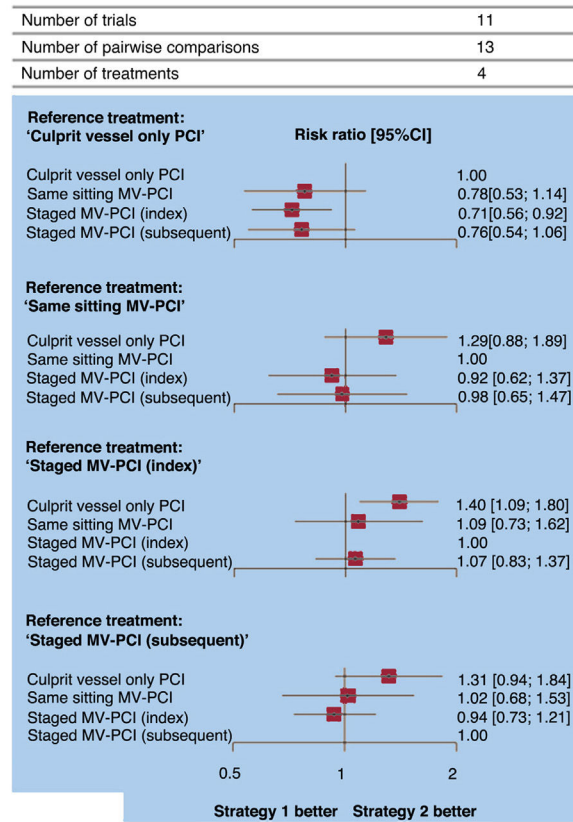


Figure 2. Forest plots. A: forest plot from network meta-analysis for all-cause death. The forest plot of pooled risk ratios and 95%CI for all-cause death were derived from a network meta-analysis. B: forest plot from node-split model analysis for all-cause death. The forest plots of pooled risk ratios and 95%CI for all-cause death were derived from a node-splitting analysis of inconsistency between accumulated direct and indirect evidence. The number under the heading “direct evidence” indicates the proportion of direct evidence within the network estimate. 95%CI, 95% confidence interval; MV-PCI, multivessel percutaneous coronary intervention; PCI, percutaneous coronary intervention; RR, risk ratio.

Sensitivity analyses and pairwise meta-analysis

The network meta-analysis was restricted to trials that used angiography alone to guide MV-PCI (figure 6A of the supplementary data), trials in which more potent P2Y₁₂-inhibitors were prescribed (figure 6B of the supplementary data), and trials with more stringent criteria for defining multivessel CAD (figure 6C of the supplementary data). These analyses did not reveal a significant change in the direction of risk estimates for the primary outcome. The network meta-analysis restricted to trials that included only patients with STEMI (figure 7A of the supplementary data) or to trials enrolling > 500 participants (figure 7B of the supplementary data) did not reveal a significant change in the direction of risk estimates for the primary outcome. However, the differences previously observed in the overall analysis were no longer statistically significant.

In the pairwise meta-analysis (figure 8 of the supplementary data), 236 deaths (4.6%) were reported in patients assigned to MV-PCI during the index hospitalization and 292 deaths (5.4%) were reported in patients assigned to the control strategy (RR, 0.85, 95%CI, 0.72-1.00; P = .050). There was no evidence of statistical heterogeneity, and the prediction interval crossed the null. Of interest, we found a nearly 3% absolute risk reduction for MI and a 13% absolute risk reduction for unplanned ischemia-driven revascularization in patients assigned to MV-PCI during the index hospitalization compared with patients assigned to control strategy (figure 9 of the supplementary data).

DISCUSSION

This meta-analysis combined study-level data from more than 10 000 MI patients with multivessel CAD without cardiogenic shock who were randomly assigned to either a strategy of MV-PCI at different time points or culprit vessel-only PCI. The primary conclusions of this meta-analysis are as follows: a) A strategy of MV-PCI vs culprit vessel-only PCI reduces cardiovascular mortality, irrespective of the timing chosen for the completion of revascularization. b) A strategy of MV-PCI during the index hospitalization, whether performed in a single sitting or staged, significantly reduces MI and unplanned ischemia-driven revascularization and was identified as the most favorable option in terms of safety and efficacy. c) The different timings of multivessel PCI did not result in any significant differences in all-cause mortality.

To the best of our knowledge, this is the first meta-analysis investigating the timing of MV-PCI in STEMI patients with multivessel CAD without cardiogenic shock. By including the recently published BioVasc, MULTISTARS AMI, and FIRE trials,⁷⁻⁹ this study offers the broadest updated evidence on the topic. Unlike a recent analysis,²³ the present study included predominantly patients with STEMI, allowing more reliable identification of culprit and nonculprit lesions. Overall, the results of the present study deserve careful consideration.

First, this meta-analysis explored a possible difference in mortality between different timings of MV-PCI in hemodynamically stable patients with STEMI. Previous meta-analyses have

Cardiovascular death

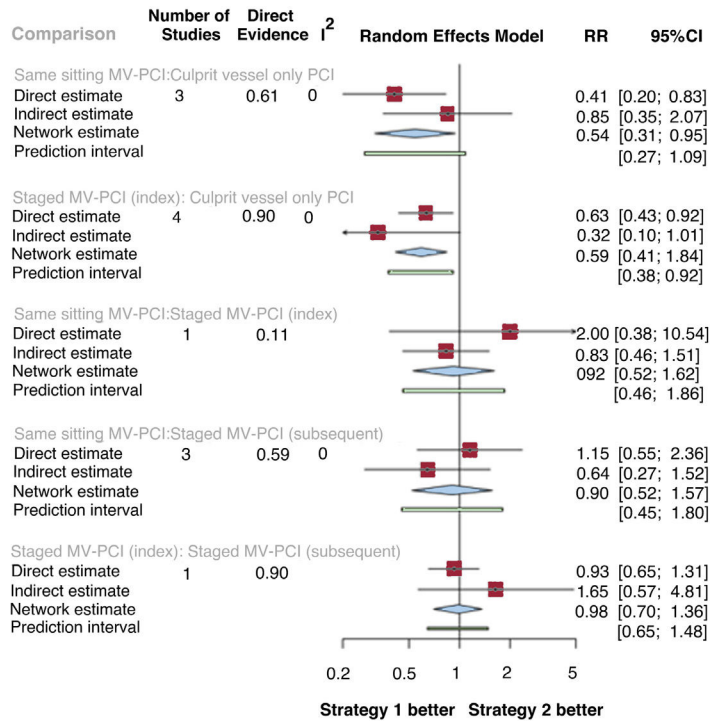
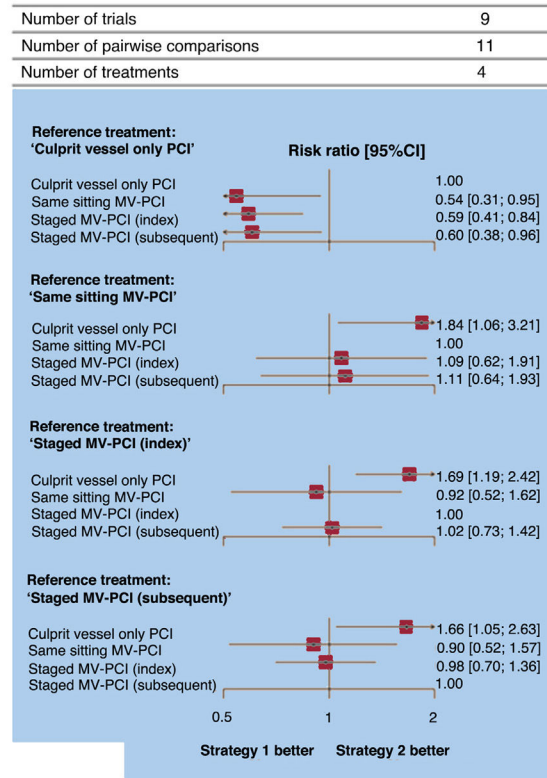


Figure 3. Forest plots. A: forest plot from network meta-analysis for cardiovascular death. The forest plots of pooled risk ratios and 95%CI for cardiovascular death were derived from a network meta-analysis. B: Forest plot from node-split model analysis for cardiovascular death. The forest plots of pooled risk ratios and 95%CI for cardiovascular death were derived from a node-splitting analysis of inconsistency between accumulated direct and indirect evidence. The number under the heading “direct evidence” indicates the proportion of direct evidence within the network estimate. 95%CI, 95% confidence interval; MV-PCI, multivessel percutaneous coronary intervention; PCI, percutaneous coronary intervention; RR, risk ratio.

evaluated the role of multivessel revascularization in patients with stable MI and multivessel CAD, while the optimal timing of multivessel PCI in this setting has been less studied. In one study,¹⁰ a subgroup analysis reported fewer cardiovascular deaths with MV-PCI, irrespective of whether the revascularization was performed during the same sitting or staged. Another study reported a significant modification of the treatment effect for the composite outcome of cardiovascular death and reinfarction by performing same-sitting MV-PCI.²⁴ This latter advantage was mostly attributable to fewer reinfarction events. Another sub-analysis in approximately 2000 patients showed a significant relative risk reduction for death with MV-PCI performed during the index hospitalization.¹¹

In contrast, a subgroup analysis of the COMPLETE trial demonstrated that the superiority of MV-PCI over culprit vessel-only PCI in terms of cardiovascular death and MI was independent of whether the PCI of nonculprit lesions was performed during the index hospitalization or in a subsequent hospitalization within 45 days.²² Unfortunately, the timing of PCI was not a random factor, and same-sitting MV-PCI was not a comparator. Therefore, the interpretation of the results from that analysis is subject to a substantial bias that cannot be completely accounted for. In contrast, in comparison with a strategy of culprit vessel-only PCI, the present study found fewer deaths from any cause with a strategy of MV-PCI during the index hospitalization and fewer cardiovascular deaths with any MV-PCI strategy, regardless of the timing chosen for completion of revascularization. This finding is reassuring and less subject to bias, given the large number of patients available and the robust statistical support.

Second, we report a reduction in MI in the group of patients assigned to MV-PCI at any time during the index hospitalization compared with culprit vessel-only PCI. Of note, although this finding is not novel, there was a change in the magnitude of treatment effect depending on the revascularization of nonculprit lesions during the same sitting, owing to a 30% incremental relative risk reduction for MI. This result could be partially attributable to a detection bias, with procedure-related MI being less frequently diagnosed in patients undergoing MV-PCI in the context of pre-existing elevated cardiac markers due to the acute MI event. On the other hand, the concept of ACS as a systemic disease involving the entire coronary tree beyond the culprit coronary vessel has been confirmed in several imaging studies showing the unstable nature of nonculprit lesions at increased risk for plaque rupture and subsequent thrombotic events.²⁵ In this regard, a strategy of MV-PCI during the index hospitalization (either in the same sitting or staged) could help prevent adverse cardiovascular events due to vulnerable nonculprit lesions.²⁶ In support of this argument, it is worth mentioning that the observed reduction in MI with a strategy of MV-PCI compared with a strategy of culprit vessel-only PCI disappeared with a strategy of MV-PCI staged during a subsequent hospitalization within 45 days.

Last, we observed a clinically relevant relative risk reduction for unplanned ischemia-driven revascularization in patients undergoing MV-PCI during the index hospitalization (either in the same sitting or staged) compared with patients treated with culprit vessel-only PCI, while a strategy of MV-PCI staged during a subsequent hospitalization within 45 days did not show a meaningful clinical impact. Although this result is clinically

Myocardial infarction

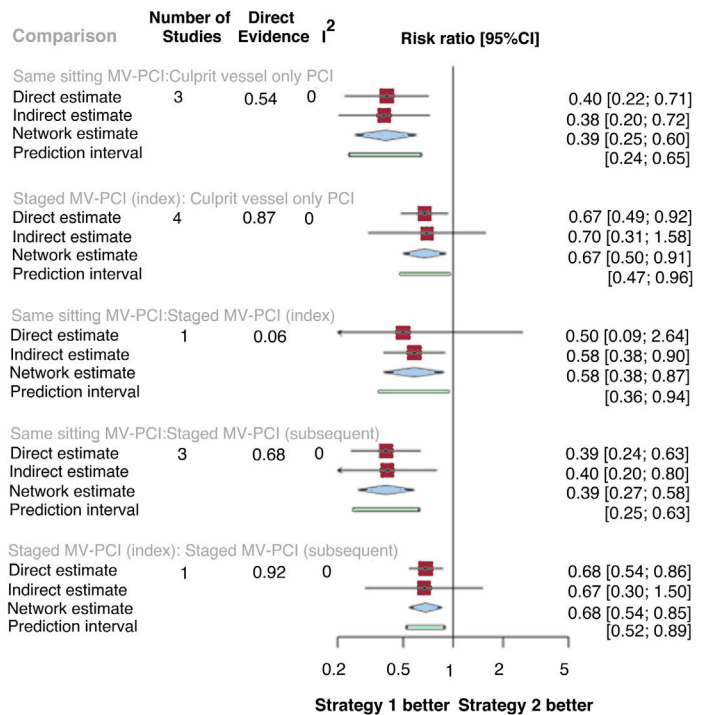
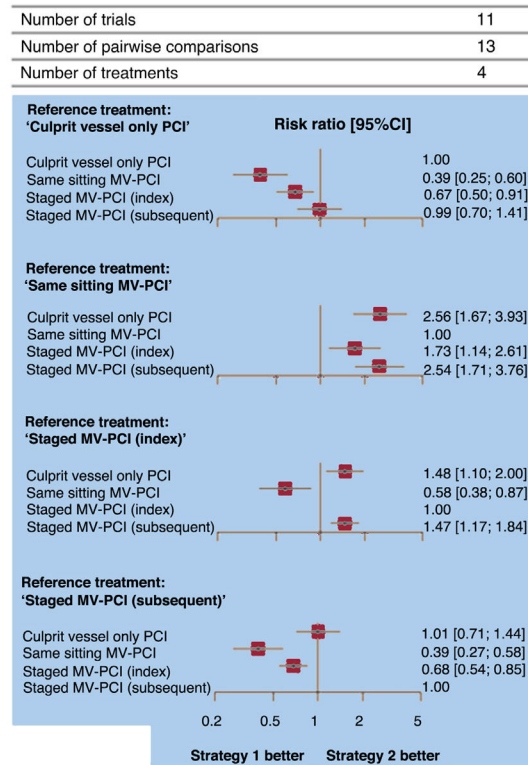


Figure 4. Forest plots. A: forest plot from network meta-analysis for myocardial infarction. The forest plots of pooled risk ratios and 95%CI for myocardial infarction are derived by network meta-analysis. B: forest plot from node-split model analysis for myocardial infarction. The forest plots of pooled risk ratios and 95%CI for myocardial infarction are derived by a node-splitting analysis of inconsistency between cumulated direct and indirect evidence. The number under the label "direct evidence" describes the proportion of direct evidence within the network estimate. 95%CI, 95% confidence interval; MV-PCI, multivessel percutaneous coronary intervention; PCI, percutaneous coronary intervention; RR, risk ratio.

plausible, we found wide statistical heterogeneity. From a scientific standpoint, the open-label design of the trials and the different thresholds to perform unplanned ischemia-driven revascularizations in the culprit vessel-only PCI group is likely to play a role. This fact lends further support to the selection of all-cause death as a primary endpoint in such analyses. Of note, recently released European guidelines for the management of patients with ACS recommend that the decision to revascularize nonculprit lesions in STEMI patients with multivessel CAD without cardiogenic shock should rely on angiographic severity and discourage a physiological assessment of nonculprit vessels during the index procedure.⁵ Arguably, the role of intravascular imaging during the index PCI to assess the degree of a bystander stenosis and to stratify the nature of nonculprit lesions is expected to increase in the coming years and will be subject to further investigation, in accordance with data suggesting that nearly half of subsequent thrombotic events in patients with ACS are associated with atherosclerotic disease progression in remote coronary segments or vessels.^{26,27}

Limitations

This study has some limitations. First, this is a study-level meta-analysis, and a meta-analysis of individual participants remains the gold standard. Although the subgroup analysis did not reveal a change in the magnitude of the treatment effect for the primary outcome, this study cannot fully explore the impact of more potent, contemporary antithrombotic regimens on the timing of

MV-PCI. In the same vein, the different timing of revascularization also implies a distinct use of antithrombotic drugs, in terms of initiation and duration. Unfortunately, the unavailability of patient-level data does not allow the analysis to be adjusted for these characteristics.

Second, in the pairwise meta-analysis, the control group consisted of patients in which nonculprit lesions were either managed with optimal medical therapy or in a staged procedure within 45 days of hospital discharge. It was determined that combining the participants from these groups into the control group was clinically appropriate, given that previous evidence suggested that, in the early postrandomization phase, patients assigned to a staged PCI after discharge or to medical management of nonculprit coronary lesions have a comparable risk for nonfatal MI and unplanned ischemia-driven revascularization.^{7,8,18}

Third, with regard to the results of this analysis, it should be noted that they do not apply to patients with clinical and anatomical features other than those presented here. All trials included in this analysis excluded patients with cardiogenic shock, and randomization was restricted to patients undergoing successful treatment of culprit vessels. Women were largely underrepresented in all the trials. In addition, the presence of a chronic total occlusion was a main exclusion criterion in 7 trials.^{7,8,16-20}

Lastly, approximately 15% of the population included had NSTEMI. Although the magnitude and direction of the treatment effect for the primary outcome did not change according to the type of MI, further investigation is required to confirm that in patients with NSTEMI, an index hospitalization strategy of MV-PCI reduces the risk of adverse cardiovascular events.²⁸

Unplanned ischemia-driven revascularization

Number of trials	11
Number of pairwise comparisons	13
Number of treatments	4

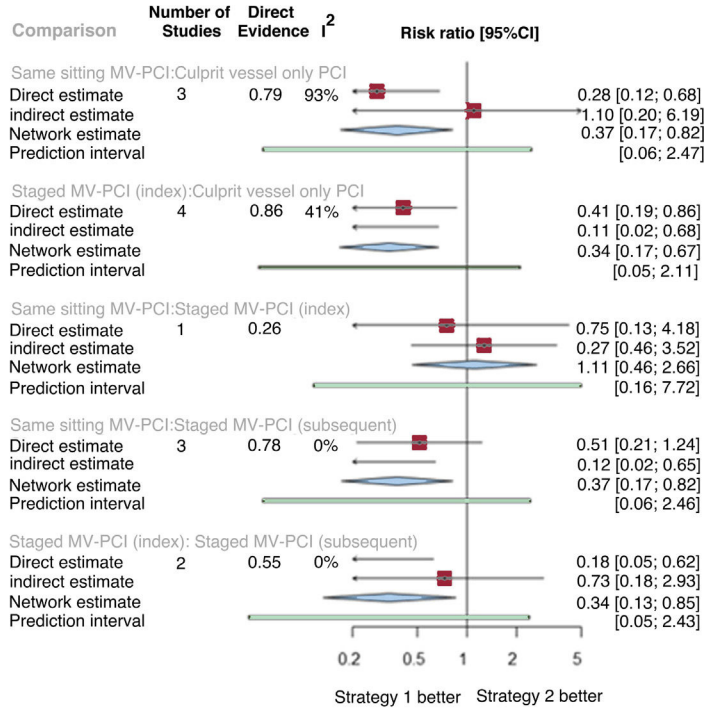
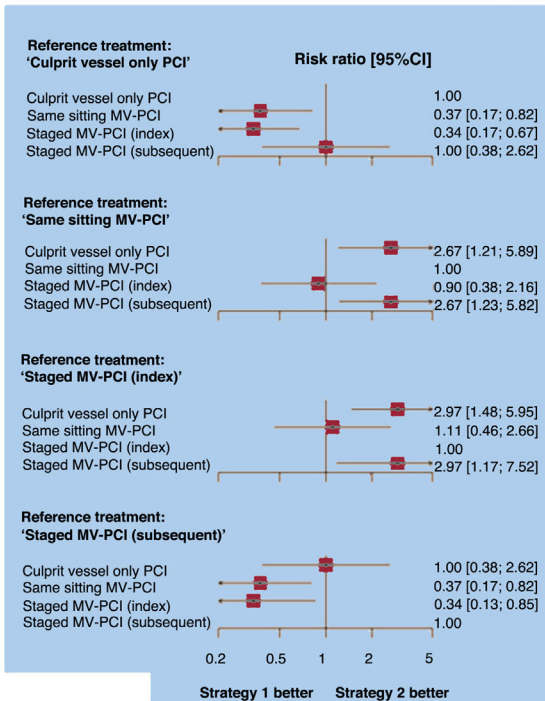


Figure 5. Forest plots. A: Forest plot from a network meta-analysis for unplanned ischemia-driven revascularization. The forest plots of pooled risk ratios and 95%CI for unplanned ischemia-driven revascularization were derived from a network meta-analysis. B: forest plot from node-split model analysis for unplanned ischemia-driven revascularization. The forest plots of pooled risk ratios and 95%CI for unplanned ischemia-driven revascularization were derived from a node-splitting analysis of inconsistency between accumulated direct and indirect evidence. The number under the heading “direct evidence” indicates the proportion of direct evidence within the network estimate. 95%CI, 95% confidence interval; MV-PCI, multivessel percutaneous coronary intervention; PCI, percutaneous coronary intervention; RR, risk ratio.

CONCLUSIONS

In patients with STEMI and multivessel CAD without cardiogenic shock, a strategy of multivessel PCI during the index hospitalization, either in the same sitting or staged, is associated with overall improved outcomes compared with other treatment strategies. Therefore, complete revascularization during the index hospitalization should become the treatment of choice in patients with STEMI and multivessel CAD without cardiogenic shock.

FUNDING

This research received no specific grant from any funding agency in the public, commercial, or not-for-profit sectors.

ETHICAL CONSIDERATIONS

The present study is a meta-analysis of aggregate data and did not require ethics approval or patient recruitment or access to disaggregated information on individuals. Possible sex/gender biases were taken into account in the preparation of this paper.

STATEMENT ON THE USE OF ARTIFICIAL INTELLIGENCE

No artificial intelligence was used in the preparation of this article.

AUTHORS' CONTRIBUTIONS

F. Voll, A. Kastrati and S. Cassese were involved in study conception and design. S. Cassese performed the data analysis. A. Kastrati supervised the data analysis. F. Voll, together with G. Ndrepepa, A. Kastrati and S. Cassese, wrote the first draft of the manuscript. C. Kuna, M. Scalamogna, T. Kessler, S. Kufner, T. Rheude, H.B. Sager, E. Xhepa, J. Wiebe, M. Joner, H. Schunkert, G. Ndrepepa, B.E. Stähli, A. Kastrati and S. Cassese were involved in data acquisition and revised the manuscript for important intellectual contents. All authors had full access to all the data, including statistical reports and tables and approved the manuscript for final submission.

CONFLICTS OF INTEREST

C. Kuna has received speaker fees from AstraZeneca. S. Kufner has received speaker and consulting fees from AstraZeneca, Bristol-Myers Squibb, and Translumina. T. Rheude has received speaker fees from AstraZeneca and SIS Medical AG. M. Joner reports institutional grant support from Boston Scientific, Cardiac Dimensions, Edwards Lifesciences and Infraredx; consulting fees from Biotronik, TriCares, Veryan, and Shockwave; speaker fees from Abbott, AstraZeneca, Biotronik, Boston Scientific, Cardiac Dimensions, Edwards Lifesciences, Recor Medical and Shockwave; participation on a Steering Committee of Biotronik and Edwards Lifesciences; travel support from Boston Scientific, Cardiac

Dimensions, Edwards Lifesciences and SIS Medical AG. E. Xhepa has received lecture fees/honoraria from AstraZeneca, Boston Scientific and SIS Medical AG; and proctoring honoraria from Abbott Vascular; and institutional grant support from Abbott Vascular. B.E. Stähli has been supported by the H.H. Sheikh Khalifa bin Hamad Al-Thani Research Programme, and reports research grants to the institution from Boston Scientific, the B. Braun Foundation, the German Center for Cardiovascular Research (DZHK), the German Heart Research Foundation, Edwards Lifesciences, the Iten-Kohaut Foundation, and the OPO Foundation, and consulting and speaker fees from Abbott Vascular, Abiomed, Boston Scientific, and SMT. S. Cassese has received lectures/proctoring honoraria from AstraZeneca, SIS Medical AG and Translumina; and institutional grant support from Abbott Vascular, Boston Scientific and SIS Medical AG. The other authors declare no potential conflict of interest.

WHAT IS KNOWN ABOUT THE TOPIC?

- In patients with STEMI and multivessel CAD without cardiogenic shock, multivessel PCI is superior to culprit vessel-only PCI. The optimal timing of the multivessel PCI remains a matter of debate, with some advocating for its performance during the index procedure, while others suggest scheduling it during a subsequent hospitalization.

WHAT DOES THIS STUDY ADD?

- In patients with STEMI and multivessel CAD without cardiogenic shock, multivessel PCI during the index hospitalization, either in the same sitting or staged, reduces the risk of death, MI, and unplanned repeat revascularization and should represent the strategy of choice in this setting.

APPENDIX. SUPPLEMENTARY DATA

Supplementary data associated with this article can be found in the online version available at <https://doi.org/10.1016/j.rec.2024.06.002>

REFERENCES

1. Park D-W, Clare RM, Schulte PJ, et al. Extent, Location, and Clinical Significance of Non-Infarct-Related Coronary Artery Disease Among Patients With ST-Elevation Myocardial Infarction. *JAMA*. 2014;312:2019–2027.
2. Faro DC, Laudani C, Agnello FG, et al. Complete Percutaneous Coronary Revascularization in Acute Coronary Syndromes With Multivessel Coronary Disease: A Systematic Review. *JACC Cardiovasc Interv*. 2023;16:2347–2364.
3. Paradies V, Waldeyer C, Laforgia PL, Clemmensen P, Smits PC. Completeness of revascularisation in acute coronary syndrome patients with multivessel disease. *EuroIntervention*. 2021;17:193–201.
4. Mehta SR, Wood DA, Storey RF, et al. Complete Revascularization with Multivessel PCI for Myocardial Infarction. *N Engl J Med*. 2019;381:1411–1421.
5. Byrne RA, Rossello X, Coughlan JJ, et al. 2023 ESC Guidelines for the management of acute coronary syndromes: Developed by the task force on the management of acute coronary syndromes of the European Society of Cardiology (ESC). *Eur Heart J*. 2023;44:3720–3826.
6. Ibanez B, James S, Agewall S, et al. 2017 ESC Guidelines for the management of acute myocardial infarction in patients presenting with ST-segment elevation: The Task Force for the management of acute myocardial infarction in patients presenting with ST-segment elevation of the European Society of Cardiology (ESC). *Eur Heart J*. 2018;39:119–177.
7. Diletti R, den Dekker WK, Bennett J, et al. Immediate versus staged complete revascularisation in patients presenting with acute coronary syndrome and multivessel coronary disease (BIOVASC): a prospective, open-label, non-inferiority, randomised trial. *Lancet*. 2023;401:1172–1182.
8. Stähli BE, Varbella F, Linke A, et al. Timing of Complete Revascularization with Multivessel PCI for Myocardial Infarction. *N Engl J Med*. 2023;389:1368–1379.
9. Biscaglia S, Guiducci V, Escaned J, et al. Complete or Culprit-Only PCI in Older Patients with Myocardial Infarction. *N Engl J Med*. 2023;389:889–898.
10. Bainey KR, Engstrom T, Smits PC, et al. Complete vs Culprit-Lesion-Only Revascularization for ST-Segment Elevation Myocardial Infarction: A Systematic Review and Meta-analysis. *JAMA Cardiol*. 2020;5:881–888.
11. Atti V, Gwon Y, Narayanan MA, et al. Multivessel Versus Culprit-Only Revascularization in STEMI and Multivessel Coronary Artery Disease: Meta-Analysis of Randomized Trials. *JACC Cardiovasc Interv*. 2020;13:1571–1582.
12. Sterne JAC, Savovic J, Page MJ, et al. RoB 2: a revised tool for assessing risk of bias in randomised trials. *BMJ*. 2019;366:l4898.
13. Hutton B, Salanti G, Caldwell D, et al. The PRISMA Extension Statement for Reporting of Systematic Reviews Incorporating Network Meta-analyses of Health Care Interventions: Checklist and Explanations. *Ann Intern Med*. 2015;162:777–784.
14. Di Mario C, Mara S, Flavio A, et al. Single vs multivessel treatment during primary angioplasty: results of the multicentre randomised HEPacoat for culPrit or multivessel stenting for Acute Myocardial Infarction (HELP AMI) Study. *Int J Cardiovasc Intervent*. 2004;6:128–133.
15. Politi L, Sgura F, Rossi R, et al. A randomised trial of target-vessel versus multivessel revascularisation in ST-elevation myocardial infarction: major adverse cardiac events during long-term follow-up. *Heart*. 2010;96:662–667.
16. Wald DS, Morris JK, Wald NJ, et al. Randomized trial of preventive angioplasty in myocardial infarction. *N Engl J Med*. 2013;369:1115–1123.
17. Engström T, Kelbæk H, Helqvist S, et al. Complete revascularisation versus treatment of the culprit lesion only in patients with ST-segment elevation myocardial infarction and multivessel disease (DANAMI-3—PRIMULTI): an open-label, randomised controlled trial. *Lancet*. 2015;386:665–671.
18. Gershlick AH, Khan JN, Kelly DJ, et al. Randomized trial of complete versus lesion-only revascularization in patients undergoing primary percutaneous coronary intervention for STEMI and multivessel disease: the CvLPRIT trial. *J Am Coll Cardiol*. 2015;65:963–972.
19. Hamza M, Mahmoud N, Elgendy IY. A Randomized Trial of Complete Versus Culprit-Only Revascularization During Primary Percutaneous Coronary Intervention in Diabetic Patients With Acute ST Elevation Myocardial Infarction and Multi Vessel Disease. *J Interv Cardiol*. 2016;29:241–247.
20. Smits PC, Abdel-Wahab M, Neumann FJ, et al. Fractional Flow Reserve-Guided Multivessel Angioplasty in Myocardial Infarction. *N Engl J Med*. 2017;376:1234–1244.
21. Mehta SR, Wood DA, Storey RF, et al. Complete Revascularization with Multivessel PCI for Myocardial Infarction. *N Engl J Med*. 2019;381:1411–1421.
22. Wood DA, Cairns JA, Wang J, et al. Timing of Staged Nonculprit Artery Revascularization in Patients With ST-Segment Elevation Myocardial Infarction: COMPLETE Trial. *J Am Coll Cardiol*. 2019;74:2713–2723.
23. Bujak K, Rinaldi R, Vidal-Cales P, et al. Immediate versus staged complete revascularization in acute coronary syndrome: a meta-analysis of randomized controlled trials. *Int J Cardiol*. 2023;393:131397.
24. Feistritz HJ, Jobs A, de Waha-Thiele S, et al. Multivessel versus culprit-only PCI in STEMI patients with multivessel disease: meta-analysis of randomized controlled trials. *Clin Res Cardiol*. 2020;109:1381–1391.
25. Goto K, Nikolsky E, Lansky AJ, et al. Impact of smoking on outcomes of patients with ST-segment elevation myocardial infarction (from the HORIZONS-AMI Trial). *Am J Cardiol*. 2011;108:1387–1394.
26. Waksman R, Di Mario C, Torguson R, et al. Identification of patients and plaques vulnerable to future coronary events with near-infrared spectroscopy intravascular ultrasound imaging: a prospective, cohort study. *Lancet*. 2019;394:1629–1637.
27. Araki M, Park SJ, Daurman HL, et al. Optical coherence tomography in coronary atherosclerosis assessment and intervention. *Nat Rev Cardiol*. 2022;19:684–703.
28. Sardella G, Lucisano L, Garbo R, et al. Single-Stage Compared With Multi-Stage PCI in Multivessel NSTEMI Patients: The SMILE Trial. *J Am Coll Cardiol*. 2016;67:264–326.