

ECG Contest

Response to ECG, May 2020

Respuesta al ECG de mayo de 2020



Ez Alddin Rajjoub Al-Mahdi,* Álvaro Lorente Ros, and Vanesa Cristina Lozano Granero

Servicio de Cardiología, Hospital Universitario Ramón y Cajal, Madrid, Spain

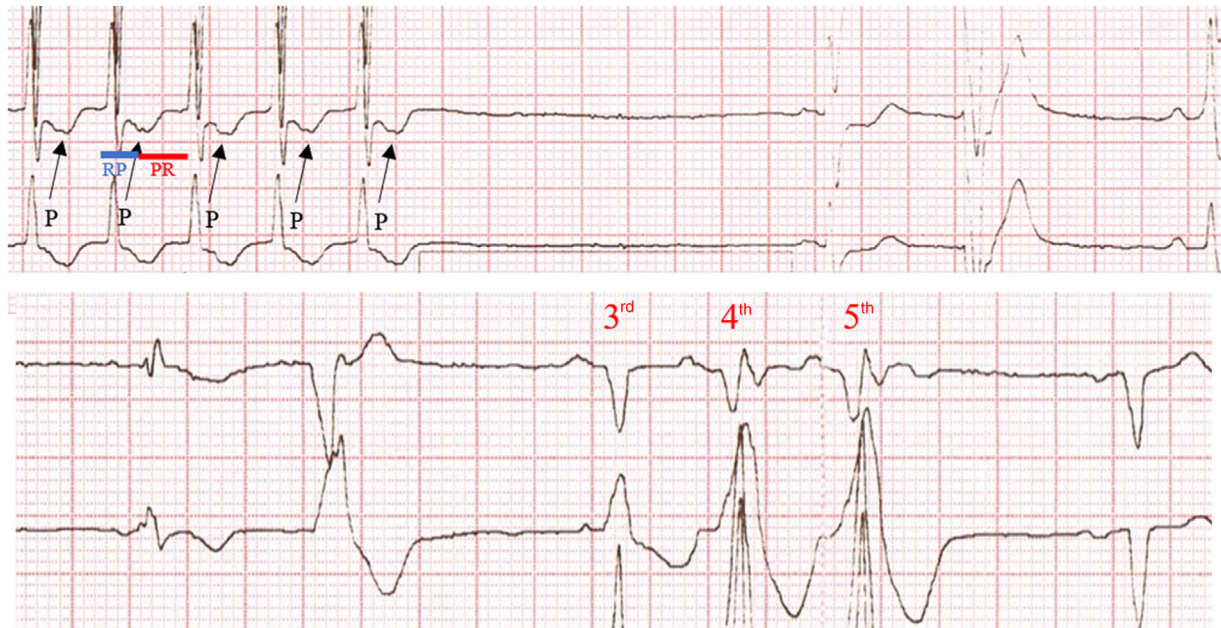


Figure 1.

A regular narrow QRS tachycardia at 176 bpm is present with RP shorter than PR (figure 1). The rapid remission of the tachycardia with carotid sinus massage points to a paroxysmal supraventricular tachycardia (option 2 incorrect). The P wave at the end of the tachycardia also rules out atrial tachycardia (option 1 incorrect). The third, fourth, and fifth beats observed after the maneuver, with broad QRS and short PR, are consistent with pre-excited beats, and this points to diagnosis of orthodromic tachycardia (option 4 correct, option 3 incorrect) via a hidden accessory pathway, that is, a pathway that can support anterograde conduction although not visible in the baseline ECG. This type of pathway is more usually left-sided (given the greater distance from the sinus node) and may become apparent with maneuvers that cause atrioventricular node block. Electrophysiological study confirmed the presence of a posterolateral accessory pathway, which was successfully ablated.

SEE RELATED CONTENT:

<https://doi.org/10.1016/j.rec.2019.11.009>

* Corresponding author:

E-mail address: erajal2010@gmail.com (E.A. Rajjoub Al-Mahdi).

<https://doi.org/10.1016/j.rec.2019.11.010>

1885-5857/© 2020 Published by Elsevier España, S.L.U. on behalf of Sociedad Española de Cardiología.