

ECG Contest

Response to ECG, February 2017



Respuesta al ECG de febrero de 2017

Javier León Jiménez,* Santiago Jesús Camacho Freire, and Raúl López Aguilar

Servicio de Cardiología, Complejo Hospital Juan Ramón Jiménez, Huelva, Spain

The correct answer is number 4. This dual-chamber pacemaker is functioning normally. There are 2 leads, 1 for pacing the Bachmann interatrial bundle and the other for pacing the bundle of His. The resulting bipolar physiological Hisian pacing does not lead to any changes in QRS morphology (Figure 1).

Given the particular features of pacing in this case, there is no loss of capture (answers 1 and 2) because all the spikes are still present in the QRS complex. Twiddler syndrome (answer 3) is ruled out by chest x-ray (Figure 2).

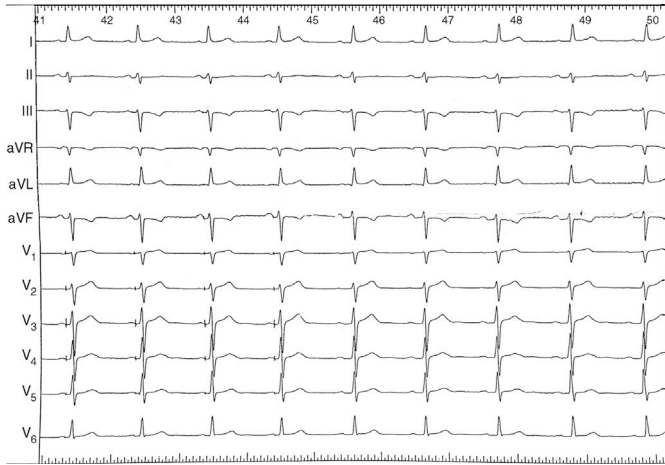


Figure 1.

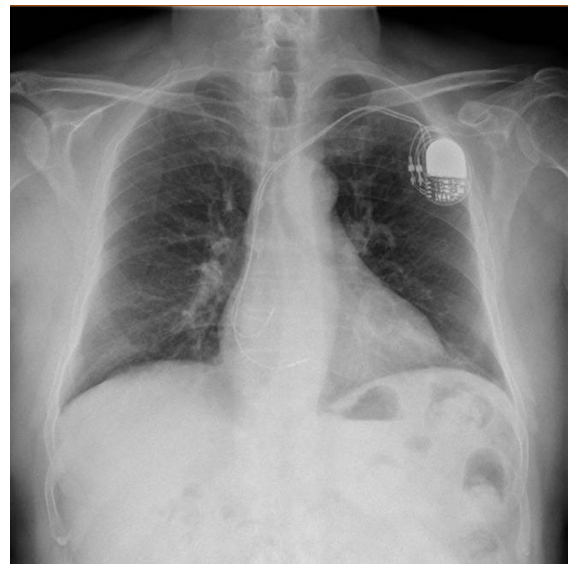


Figure 2.

SEE RELATED CONTENT:

<http://dx.doi.org/10.1016/j.rec.2016.11.012>

* Corresponding author:

E-mail address: javierleonjimenez@gmail.com (J. León Jiménez).

Available online

<http://dx.doi.org/10.1016/j.rec.2016.11.013>

1885-5857/© 2016 Sociedad Española de Cardiología. Published by Elsevier España, S.L.U. All rights reserved.