

## ECG Contest

## Response to ECG, August 2017



## Respuesta al ECG de agosto de 2017

Javier Higuera,<sup>\*</sup> Julián Palacios-Rubio, and Carmen Olmos

Instituto Cardiovascular, Hospital Clínico San Carlos, Universidad Complutense, Madrid, Spain

A managed ventricular pacing (MVP) algorithm was applied, with the pacemaker working correctly (correct answer, 4). In the upper trace of the **Figure**, sequential pacing can be observed with an atrioventricular interval of 150 ms, except for the last beat, in which the pacemaker switches to AAI mode. The MVP algorithm periodically makes such checks.<sup>1</sup> In the lower trace, the pacemaker is working in AAI mode with atrial pacing (asterisks) when the heart rate drops below the threshold (60 bpm). An atrial pace is present after the sixth QRS: the MVP algorithm will ensure that there is no atrioventricular conduction, but in the next complex (double arrow), the pacemaker emits a safety pace, which with this model has an atrioventricular interval of 80 ms. This is not ventricular capture failure (answers 1 and 2, incorrect) because there is no ventricular pace spike and at no point is failure of atrial capture observed (answer 3, incorrect).

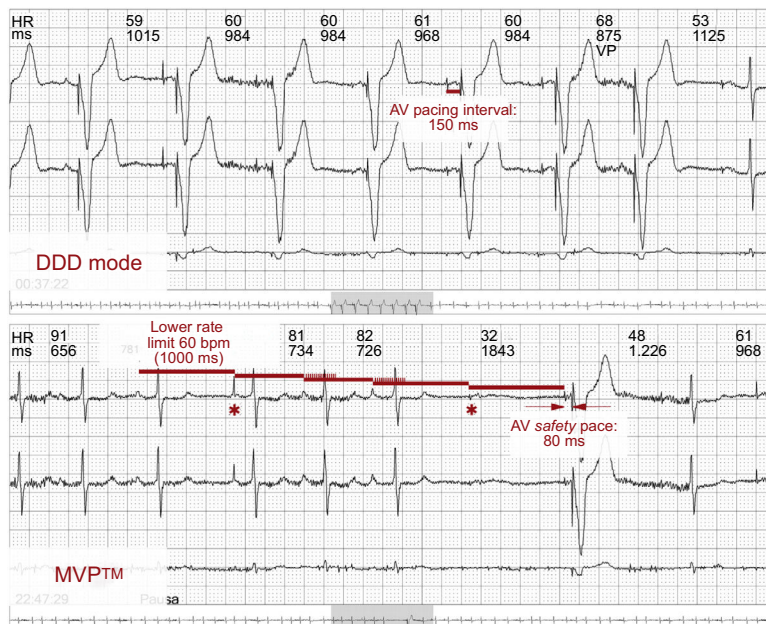


Figure.

## REFERENCE

1. Medtronic Manual Library. Instructions for use and products manuals for Medtronic Adapta/Versa/Sensia Pacemakers. Minneapolis: Medtronic; 2009. Available at: <http://manuals.medtronic.com/>.

## SEE RELATED CONTENT:

<http://dx.doi.org/10.1016/j.rec.2017.01.018>

\* Corresponding author:

E-mail address: [javierhnb@yahoo.es](mailto:javierhnb@yahoo.es) (J. Higuera).

<http://dx.doi.org/10.1016/j.rec.2017.01.019>

1885-5857/© 2016 Sociedad Española de Cardiología. Published by Elsevier España, S.L.U. All rights reserved.