

Non-Coronary Arterial Disease (II)

Novel Imaging Techniques for Quantifying Overall Atherosclerotic BurdenBorja Ibáñez,^a Antonio Pinero,^{a,b} Miguel Orejas,^b and Juan J. Badimón^a^aThe Zena and Michael A. Wiener Cardiovascular Institute, Mount Sinai School of Medicine, New York, United States^bFundación Jiménez Díaz-Capio, Madrid, Spain

Atherothrombosis (ie, atherosclerosis and its thrombotic complications) is a systemic disease with local manifestations. Basic understanding of the pathological processes involved in the development and progression of the disease makes it possible to adopt a general approach to early diagnosis with a view to timely treatment.

Knowledge of an individual's overall atherosclerotic burden is extremely important, as it enables risk factors to be treated more aggressively. Non-invasive imaging provides a means of quantifying atherosclerotic burden in accessible areas such as the carotid arteries and the aorta. There is some evidence that there is a correlation between atherosclerotic burden in these areas and that in other less accessible areas, such as the coronary arteries. It may be possible, therefore, to obtain an estimate of overall atherosclerotic burden using non-invasive techniques.

Novel imaging modalities, such as multidetector computed axial tomography, enable the coronary artery tree to be explored non-invasively, with highly promising results for both diagnosis and screening in high-risk patients.

Molecular imaging techniques enable not only the anatomy but also the function of specific tissues and anatomical territories to be studied non-invasively. These new techniques provide highly promising tools for an early diagnosis in high-risk locations.

Key words: *Atherosclerosis. Atherothrombosis. Imaging techniques. Cardiac magnetic resonance. Computed axial tomography.*

Nuevas técnicas de imagen para la cuantificación de la carga aterosclerótica global

La aterotrombosis (aterosclerosis y sus complicaciones trombóticas) es un proceso sistémico con manifestaciones locales. Una comprensión básica de los procesos implicados en la génesis y progresión de esta enfermedad permite un enfoque global orientado a un diagnóstico precoz en vistas a un tratamiento temprano.

El conocimiento de la carga aterosclerótica global individual es de alta importancia, ya que permite un manejo más agresivo de los factores de riesgo. El campo de la imagen no invasiva ofrece la posibilidad de cuantificar la carga aterosclerótica en regiones accesibles (carótidas, aorta). Existen datos que sugieren una correlación entre la carga aterosclerótica presente en dichos territorios y la existente en otros territorios menos accesibles (coronarias), y por tanto es posible realizar una estimación de la carga aterosclerótica global de forma no invasiva.

Nuevas modalidades como la tomografía axial computarizada con multidetectores permite explorar de forma no invasiva en el territorio coronario, con resultados altamente prometedores tanto diagnósticos como de cribado en pacientes de alto riesgo.

Las técnicas de imagen molecular permiten un abordaje no invasivo no sólo de la anatomía, sino de la funcionalidad de diferentes tejidos/territorios. Estas nuevas modalidades son altamente prometedoras a la hora de realizar un diagnóstico precoz de regiones de alto riesgo.

Palabras clave: *Atherosclerosis. Aterotrombosis. Técnicas de Imagen. CRM. TAC.*

Sección sponsored by Laboratorio Dr. Esteve

Correspondence: Dr. J.J. Badimón.
Mount Sinai School of Medicine.
One Gustave L. Levy Place, Box 1030, New York, NY 10029, USA.
E-mail: juan.badimon@mssm.edu

INTRODUCTION

Atherosclerosis is a diffuse systemic disease that is characterized by the existence of lipid-rich plaques in the walls of large and medium-sized arteries. Plaques with high lipid content have been referred to as “unstable”, “vulnerable,” or “high-risk” because of their propensity to rupture, thus predisposing the patient to

ABBREVIATIONS

ICAM-1: intercellular adhesion molecule 1
 LDL: low-density lipoprotein
 MDCT: multidetector computed tomography
 MR: magnetic resonance
 TIA: transient ischemic attack
 VCAM-1: vascular cell adhesion molecule 1

an acute event. On the clinical level, atherosclerosis is basically characterized by the formation of an acute (occlusive) thrombus anchored to a ruptured or eroded plaque; thus, the term atherothrombosis is a more complete definition of the nature of the disease. Despite the fact that, currently, atherosclerotic disease is usually diagnosed once the local signs (acute coronary syndrome, transient ischemic attack [TIA], acute stroke, or limb ischemia) have appeared, due to the generalized nature of the disease, it can be diagnosed in the preclinical or asymptomatic stage, a circumstance that enables early treatment. Atherothrombosis is the major cause of morbidity and mortality in developed countries, and the future is not much more promising, either in developed or developing countries. Ever since Virchow proposed his hypothesis concerning the development of atherosclerosis, obstructive atherosclerotic disease has been divided into three categories: coronary artery disease, cerebrovascular disease, and peripheral arterial disease.

Based on a common origin, all these clinical manifestations are currently grouped under the single term “atherothrombotic disease.”

PATHOPHYSIOLOGY

From the pathophysiological point of view, atherosclerosis is a single systemic disease caused by a common process, regardless of the vascular territory involved.

Different studies demonstrate that evidence of atherosclerosis can be detected as early as the second or third decade of life, prior to the onset of clinical signs.¹⁻³ Atherosclerosis begins with the dysfunction of the endothelium (the natural barrier between the blood flow and the arterial wall). Its main function is to render the wall “nonadhesive” and capable of adapting to the rheological needs of the arterial vessel. The initial lesions are fatty streaks, which consist of the subendothelial accumulation of cholesterol-loaded macrophages (foam cells) that appear very early in the aorta, subsequently in the coronary arteries and, later, in the cerebral circulation.⁴ Once the endothelium becomes dysfunctional, it allows low-density lipoprotein (LDL) cholesterol molecules to penetrate the arterial wall

through the endothelium. In an attempt to contain this “invasion”, monocytes/macrophages phagocytose the previously oxidized LDL cholesterol and become cholesterol-loaded cells. When the macrophages are replete with cholesterol, they become foam cells. Due to the fact that cholesterol is not easily metabolized outside the liver, its continuous accumulation within the cells, which fail to thrive, leads them to commit “suicide” (apoptosis or programmed cell death),⁵ with the resulting release of prothrombotic substances, such as tissue factor. Following the death of the macrophage foam cells, the cholesterol is again released into the arterial wall, thus perpetuating the process.^{6,7} Finally, the cholesterol can crystallize, a factor that has recently been reported to destabilize the plaque.⁸

Endothelial dysfunction is a reversible systemic disorder that is considered to be the earliest disease process involved in atherosclerosis.^{9,10} It is the failure of the endothelium as a natural barrier, which not only promotes incompetence at the functional level, but permits the infiltration of the arterial wall by different harmful substances, including the recruitment of inflammatory cells in the vessel wall.

Shear stress also plays a fundamental role not only in the formation of the atherosclerotic plaque, but in the differences in the composition and behavior of the plaques as well,¹¹ even stimulating the expression of inflammatory genes and adhesion molecules by the endothelium.¹²

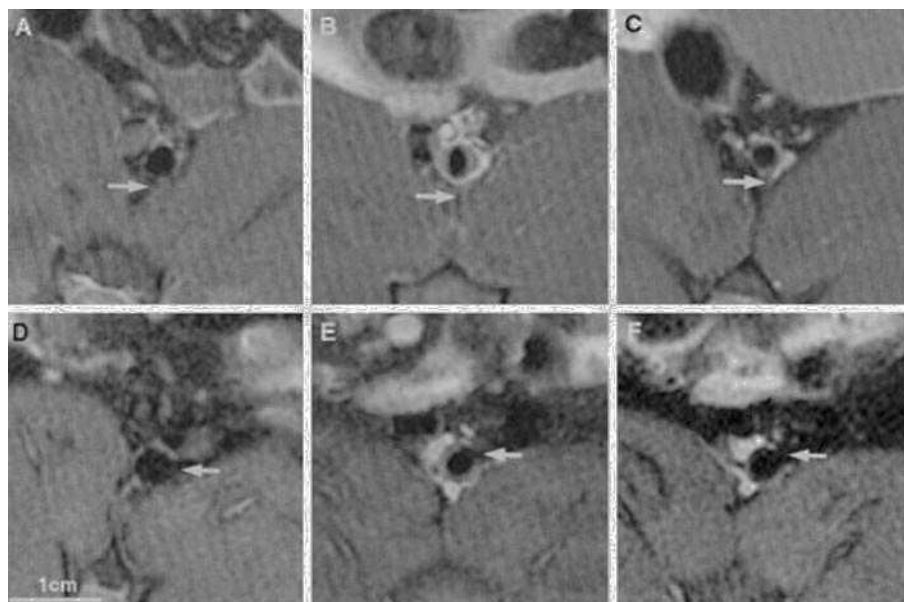
Activated endothelial cells produce cytokines and express adhesion molecules such as intercellular adhesion molecule 1 (ICAM-1) and vascular cell adhesion molecule 1 (VCAM-1). Blood cells with receptors for these adhesion molecules (lymphocytes, monocytes) bind to them and, due to the cytokines secreted, are stimulated to migrate through the endothelial junctions toward the intima, where they are transformed into macrophages, a step that is highly important in the development of atherosclerosis.¹⁴ The LDL cholesterol particles, which, under normal conditions, would be transported to the liver, undergo oxidation, a circumstance that provokes an inflammatory response and their uptake by macrophages.

As the lipid core of the atheromatous plaque grows due to the accumulation of LDL cholesterol particles and macrophages, smooth muscle cells migrate from the media toward the intima. These cells produce and secrete collagen and fibrous elements of the extracellular matrix, resulting in the formation of the fibrous covering of the fibroatheromatous plaques. Initially, these plaques do not reduce the vascular lumen because there is a compensatory dilatation of the vascular wall (positive remodeling).¹⁵ The plaque grows eccentrically, causing the thinning of the media and adventitia, until the compensatory dilatation can no longer continue, at which time, the plaque begins to grow toward the center of the vascular lumen, compromising the blood flow.

Figure 1. Serial magnetic resonance images in rabbit abdominal aorta showing progression and regression of an atherosclerotic plaque.

An increase in the size of the atheromatous plaque nine months after induction of atherosclerosis, followed by its regression six months after discontinuation of the atherogenic diet. Panels A and D correspond to baseline images at different levels of abdominal aorta. Panels B and E correspond to the images obtained at these two levels, respectively, months after induction of atherosclerosis. Finally, panels C and F correspond to the images obtained 6 months after discontinuation of the atherogenic diet.

Reproduced with the permission of Helft et al.¹⁵



Most acute cardiovascular events are not caused by the progressive narrowing of the vascular lumen, but by complications involving the atherosclerotic plaque (rupture, ulceration, hemorrhage, erosion) that provoke acute vascular occlusion due to vessel thrombosis.

EARLY DETECTION OF ATHEROSCLEROSIS USING IMAGING TECHNIQUES

As we mentioned above, atherosclerosis can develop as early as the second or third decade of life. Moreover, the lesions that provoke the symptoms often are not stenotic and, thus, are not detectable by conventional contrast angiography. For this reason, the visualization and composition of the plaque is more important than the degree of stenosis.

Over the last few years, great advances have been made in imaging techniques that enable the visualization and characterization of atheromatous plaques, as well as the monitoring of their progression or regression (Figure 1).¹⁶ Moreover, once atherosclerosis is detected in one territory, given the diffuse nature of the disease, we can assume that all the territories are affected. Its early detection would generate novel opportunities for primary prevention through changes in lifestyle or even through drug therapy, especially in patients at high cardiovascular risk.

INTIMA-MEDIA THICKNESS

The intima-media thickness is considered and has been validated as a marker of generalized atherosclerotic disease.¹⁷ In fact, it correlates linearly with the number of atherosclerotic risk factors.¹⁸

The measurement of the intima-media thickness and the quantitative and qualitative analysis of the atheromatous plaques can be performed using, among other techniques, magnetic resonance (MR) imaging and surface or transesophageal ultrasound.

B-mode ultrasound with Doppler flow measurement has been established as the imaging modality of choice for visualizing the intima-media thickness. An 8-MHz transducer can be utilized to measure this index in medium-size to large arteries, such as the carotid, femoral, or radial arteries. Likewise, it is possible to characterize the visualized atheromatous plaque since the echogenicity of the plaque is determined by its composition: a heterogeneous hypoechoic plaque is associated with the presence of lipids, whereas a homogeneous hyperechoic plaque is mainly fibrous.¹⁹

Different studies in which ultrasonographic measurements were compared with the histological findings have demonstrated that the determination of the intima-media thickness of posterior wall of the carotid artery by means of ultrasound reflects the true thickness of the wall,²⁰⁻²² although it appears that the measurements recorded with ultrasound may be slightly greater. The values provided by the measurement of proximal carotid wall are less accurate.

Although a number of measurements of differing complexity can be carried out, such as calculating the mean of 12 different points along the carotid artery or the inclusion of the measurement of the carotid bifurcation, the measurement most frequently employed is that of common carotid artery^{23,24} for two reasons: because it is the most reproducible approach and because it has been shown to have a capability for predicting events similar to that of more complex and complete methods. However, the combination of information from

different segments can increase the accuracy of this index.

It must be kept in mind that, since the intima-media thickness is a continuous variable, there is no clear upper cut-off value with which to define an atherosclerotic plaque. Normal carotid intima-media thickness has been arbitrarily established as 0.5 mm to 1.2 mm²⁵; thus, values over 1.1 mm to 1.2 mm are considered to define the presence of an atherosclerotic plaque.

One of the premises on which the use of this index as a vascular marker is based is that it indicates generalized atherosclerosis. Increased carotid intima-media thickness reflects atherosclerosis in the abdominal aorta²⁶ and in the arteries of the lower limbs,²⁷⁻²⁹ and has even been reported to be associated with increased left ventricular mass.^{30,31} With respect to coronary artery disease, a number of studies have demonstrated that atherosclerosis in the carotid artery and aorta are markers of coronary atherosclerosis.³²⁻³⁵ Patients with symptomatic coronary artery disease have an increased carotid intima-media thickness in comparison with asymptomatic controls.³⁶ Carotid wall thickening has also been found in patients with silent ischemia.³⁷ In any case, although the relationship between carotid intima-media thickness and the severity of coronary artery disease is quite common, it is important to point out that it is weak.³⁸

The intima-media thickness is a marker not only for coronary atherosclerosis, but for the progression of coronary artery disease as well, as was seen in prospective epidemiological studies.¹⁷ The Cardiovascular Health Study found that an increase in the intima-media thickness increased the relative risk of acute coronary syndrome or acute stroke in patients over 65 years of age.³⁴ In prevention trials involving lipid-lowering treatments, it was observed that a decrease in intima-media thickness was associated with a reduction in the incidence of cardiovascular events.³⁹⁻⁴² Thus, given that it correlates well with the progression/regression of atherosclerosis, the measurement of the intima-media thickness of the carotid artery may be a good method for monitoring the effect of treatment in patients.

IMPORTANCE OF CALCIUM AND ITS CORRELATION WITH THE ATHEROSCLEROTIC BURDEN

The identification of coronary artery calcium is an indicator of chronic atherosclerotic changes in the coronary artery wall.⁴³ Coronary artery calcification is a common phenomenon that is not necessarily indicative of obstructive coronary artery disease. In most cases, it is a sign of chronic changes in arterial wall remodeling and, less frequently, of vulnerable or high-risk plaques. However, it is known that the more widespread the chronic atherosclerotic involvement, the stronger the association with vulnerable or high-risk plaques and, thus, with a higher incidence of ischemic events.

At the present time, there are two techniques for quantifying coronary artery calcium: electron beam computed tomography and multidetector (multislice) computed tomography (MDCT). Both techniques are capable of accurately quantifying the coronary artery calcium load. Although the electron beam technique is considered the “gold standard” for this determination, the approach most widely used for the quantification of coronary artery calcium is multislice computed tomography due to its greater availability and its good correlation with the electron beam technique; in addition, its reproducibility is better.^{44,45}

The technique described by Agatston et al⁴⁶ consists of measuring the total area of the calcified coronary plaque in pixels, slice by slice, and assigning it a score. The Agatston calcium score is obtained as a result of multiplying the area of the calcified lesion by a factor that depends on the peak attenuation in the lesion. There can be problems with noise artifacts and variations in the scanning protocol (mainly due to differences in slice thickness), which lead to variations in the reproducibility. For this reason, new approaches for calculating calcium volume and mass that exhibit greater reproducibility and consistency have recently been designed.⁴⁷

The calcium score provides an accurate estimation of the coronary atherosclerotic burden and is a powerful predictor of cardiac events in asymptomatic patients.⁴⁸ Patients with no coronary calcium or a low calcium score have a lower probability of experiencing clinical events than those with high scores.⁴⁹ Along general, consensus-based lines, the coronary atherosclerotic burden is considered to be minimal (calcium score of 0 to 10), mild (calcium score of 11 to 100), moderate (calcium score of 101 to 400) or severe (calcium score over 400). A calcium score over 1000 is associated with an annual risk of experiencing a cardiovascular event of 25% (indicating the need for aggressive therapeutic measures in these patients). However, these values have to be adjusted according to age and sex, on the basis of the percentiles reported for the general population, since a calcium score of 45 in a 45-year-old man (indicating moderate risk as it is above the 95th percentile for that age) is not the same as a score of 45 in a 75-year-old man (who would be below the 10th percentile).⁵⁰

Interestingly, ethnic differences in the atherosclerosis-related calcium burden have also been reported, and can not be explained by the known conventional risk factors.⁵¹

It is important to point out that the coronary calcium score has not been shown to be a predictor of events independently of the conventional risk factors.⁵⁰ For the stratification of the risk of cardiovascular events, algorithms that combine the classical risk factors, such as the Framingham study or the Prospective Cardiovascular Munster (PROCAM) study are generally employed. Conference V on the prevention of

Techniques for Evaluating the Presence of Atherosclerotic Disease*

	Lumen	Wall	Territory	Invasiveness	Radiation	Time	Cost
Angiography	+++	–	All	+++	++	++	++
IVUS	+++	++	Co, Ca, Per	+++	–	+++	+++
Doppler ultrasound	+++	+	Ca, Per	–	–	+	+
TEE	+++	+	Ao, Co Prox	+	–	++	+
MDCT	+++	+?	≈Co	–	++	–	++
Nuclear medicine	+	+?	Co, Ca, Per	–	+++	+++	++
MR	+++	+++	All	–	–	+++	++

*Ca indicates carotid arteries; Co, coronary arteries; IVUS, intravascular ultrasound; MD, multidetector computed tomography; MR, magnetic resonance; Per, peripheral vascular territories; Prox, proximal territory; TEE, transesophageal echocardiography.

cardiovascular disease, sponsored by the American Heart Association,⁵² addressed the use of the calcium score, among other noninvasive tests, in selected populations of asymptomatic patients, and it has been endorsed by the National Cholesterol Education Program (NCEP, Panel III).⁵³ For example, asymptomatic patients with an intermediate risk (ten-year risk of 10% to 20% and two or more coronary risk factors according to the Framingham criteria) constitute the group that could benefit the most from a change in treatment and lifestyle and, thus, would be the group in which the quantification of the calcium score would be most clearly indicated. There would also be certain subgroups of selected low-risk patients, for example, young patients with a family history of early-onset ischemic heart disease, that could benefit from this technique.⁵⁴ In these patients, a high calcium score would markedly increase the risk of cardiovascular events, and measures aimed at prevention would need to be intensified. If, on the other hand, the results of the test were negative, the risk would be lower. Some authors indicate that the combination of the calcium score with the conventional risk factors would be a better approach to estimating risk in asymptomatic patients.^{55,56} Moreover, in those patients with cardiovascular risk factors and a high calcium score, stress perfusion imaging and/or a ventricular function test can provide diagnostic and prognostic information.⁵⁶

Recent data indicate that, at the present time, serial monitoring involving the calcium score to observe the progression or regression of atherosclerosis is not recommended.^{54,57}

NEW IMAGING TECHNIQUES FOR QUANTIFICATION OF THE OVERALL ATHEROSCLEROTIC BURDEN

The imaging of atherosclerotic plaques has traditionally focused on assessing the degree of stenosis that the plaques produce in the arterial lumen. However, as was mentioned above, it is now a well known fact that most cardiovascular events are secondary to nonstenotic plaques.¹⁵ This demonstrates the need for imaging techniques capable of identifying not only the degree

of stenosis associated with the atheromatous lesions, but their composition and degree of inflammation as well, in order to identify possible high-risk (vulnerable) plaques prior to their clinical manifestation. These imaging techniques include invasive approaches such as intravascular ultrasound, angiography, optical coherence tomography; and noninvasive approaches like MR, positron emission tomography (PET) and computed tomography (Table). Here we will focus only on the noninvasive techniques, with special attention to molecular imaging techniques.

Magnetic resonance is a technique that enables us to evaluate in detail the arterial vascular tree at practically every level, including coronary arteries, the aorta and its major branches, carotid arteries and the arteries of the lower limbs, and is harmless to the patient. It has been proposed as a technique that makes it possible to visualize the composition of the plaque, based on differences in the biophysical and biochemical properties of the different components of the plaque.⁵⁸ By combining multicontrast sequences, it is possible to determine the anatomy of the plaque and its composition.

Contrast-enhanced MR angiography is a highly sensitive and specific technique as compared to conventional x-ray angiography for the detection of stenosis of more than 50%.⁵⁹ With this approach, it is possible to perform whole body angiography, with the exclusion of intracranial and coronary arteries, which are the only territories that require site-specific studies.

Magnetic Resonance Study of Carotid Plaques

The carotid arteries are vessels of good caliber that are not subjected to movement. Thus, they are ideal for noninvasive imaging studies. Magnetic resonance makes it possible not only to quantify the size of the atherosclerotic plaque, but to assess the integrity of the fibrous cap.⁶⁰ There is a close association between the thinning or rupture of the fibrous cap of the carotid plaque detected by MR and a recent history TIA or acute stroke.⁶¹ It is technically possible to combine MR angiography (quantification of the degree of stenosis and its spatial



Figure 2. Magnetic resonance angiographic study in a patient with neurological symptoms, showing stenosis at the right carotid artery bifurcation.

distribution) with high-resolution MR (characterization of the arterial wall and the composition of the plaque)⁶² (Figure 2).

Magnetic Resonance Study of Aortic Plaques

Atheromatous plaques in the thoracic aorta can be evaluated using high-resolution (submillimetric resolution)

MR, although there are potential artifacts secondary to breathing movements. Magnetic resonance is more reliable than transesophageal ultrasound with respect to the characterization of the plaque, although the findings with both techniques have been shown to have a strong correlation for plaque thickness.⁶³ It is also possible to carry out contrast-enhanced MR angiography of the thoracoabdominal aorta and its branches, which provides spatial information on the distribution of the plaques and on renal artery involvement.¹⁶ Magnetic resonance is the ideal tool for monitoring plaque regression following the initiation of lipid-lowering treatment, as has been demonstrated by our group^{64,65} (Figure 3).

Molecular Imaging Magnetic Resonance

Above, we described the different imaging techniques that can be employed to detect advanced-stage atherosclerotic disease for the purpose of quantifying the size and composition of the atherosclerotic plaque. However, novel imaging modalities (molecular imaging techniques) have been developed that are potentially capable of detecting the disease in the early stages. Molecular imaging can be considered an *in vivo* equivalent to immunohistochemical techniques. The purpose is to identify different molecules and/or cells by means of radiolabeled markers, which enhance the signal at any site at which they are deposited. The contrast agent should identify the target or objective, exhibiting high specificity as well as a signal intense enough to be detected and differentiated from unlabeled zones⁶⁶ (Figure 4).

A number of techniques have been developed with sufficient spatial resolution to afford molecular imaging:

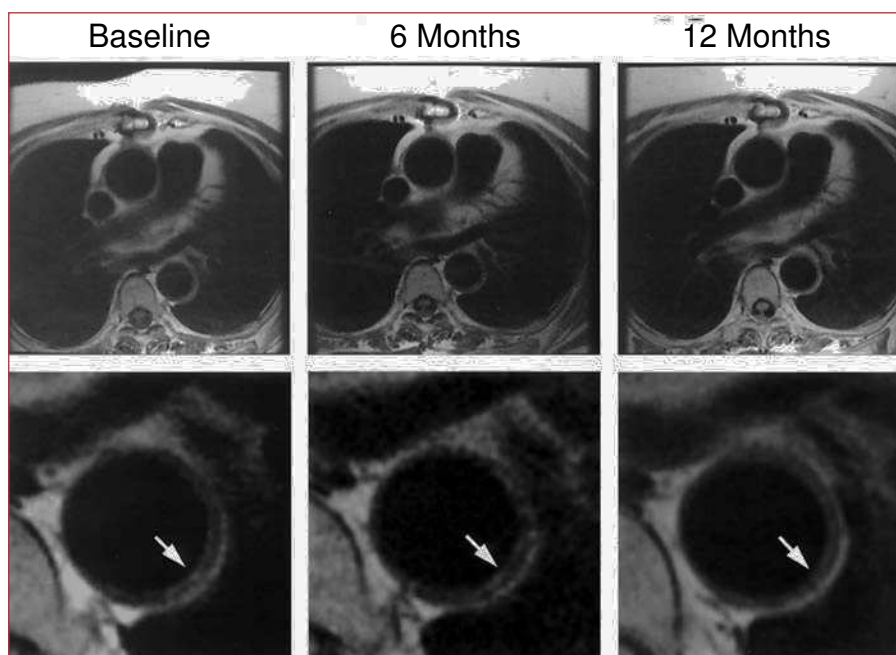


Figure 3. Regression of atherosclerotic plaque in human descending thoracic aorta after initiation of lipid-lowering treatment. Image reproduced with the permission of Corti et al.⁵⁴

MR with targeted contrast agents, ultrasound probes, optical imaging techniques (fluorescent and bioluminescent) and nuclear medicine techniques (PET and single photon emission computed tomography [SPECT]).

Magnetic resonance offers excellent spatial resolution, although its sensitivity is lower than that of nuclear medicine techniques.⁶⁶ The contrast agents can bind to monoclonal antibodies or specific peptides.⁶⁷ The best results are obtained with nanoparticles that combine a high binding affinity for the target zone with the capacity to transport a sufficient amount of a paramagnetic contrast agent. The most widely employed nanoparticles are liposomes and fluorocarbon-based lipid emulsions. Molecular imaging techniques have been used for the visualization of thrombi (by means of contrast agents that bind to antibodies against fibrin, platelet $\alpha v \beta 3$ receptors), of angiogenesis (with contrast agents targeted against $\alpha v \beta 3$ -integrin, which is expressed by endothelial cells only during angiogenesis)⁶⁸ or of inflammation (using contrast agents that bind to antibodies targeted against antigens present during inflammatory processes, such as VCAM 1, ICAM 1 and E-selectin).⁶⁹⁻⁷² Moreover, in rabbit models, it has been reported that paramagnetic iron oxide particles (USPIO) can be “attracted” by macrophages (cells that predominate in “vulnerable” plaques).⁷⁴ This same observation has been made in human carotid arteries where, after the administration of USPIO, there is an accumulation of the contrast agent in the macrophage-rich zones of unstable plaques.⁷⁵

Positron Emission Tomography and Single Photon Emission Computed Tomography

By bonding to different compounds radioactive isotopes (radionuclides) are capable of detecting different molecular and cellular processes and, thus, provide a useful imaging technique that enables us to identify different components of the atheromatous plaques. The radioisotope must be attached to a tracer substance prior to its administration. Isotope detection is performed mainly by PET and SPECT. The data obtained are processed and reconstructed by computer, resulting in two-dimensional and three-dimensional images and the localization of the distribution of the tracer in the tissues being studied.⁷⁶ An ideal tracer for imaging atheromatous plaques should attach to components of the plaque, after which it should undergo rapid washout to allow sufficient contrast between the plaque and the blood. We briefly discuss the different target regions of atheromatous plaques on which radionuclides can be deposited to provide information on the composition of the plaque.

Matrix Metalloproteinases

Matrix metalloproteinases are proteins that “digest” the extracellular matrix of the atheromatous plaque, a

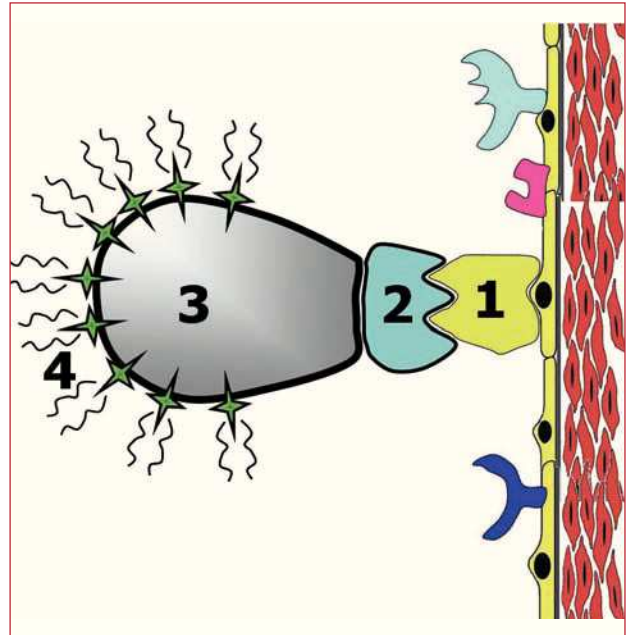


Figure 4. Illustration of the concept of molecular imaging. The specific molecule that is to be investigated (specific receptors, integrins, adhesion molecules, etc, indicated in the Figure by the number 1) is identified by a ligand, which binds to the molecule to be studied. The ligands (number 2 in the Figure) are usually monoclonal antibodies that specifically recognize the molecule to be studied. Previously (in vitro), the ligand has been bound to signal transmitting substances (number 4 in the Figure). This bond is mediated by a vehicle (number 3 in the Figure) that is capable of binding specifically to the ligand and the signal transmitting substances. This makes it possible to locate certain molecules by means of imaging techniques.

circumstance that can destabilize the plaque. Their activity is considered to be an important marker of plaque vulnerability. In studies using models of atherosclerosis in mice⁷⁷ and rabbits,⁷⁸ the contrast agents targeted against these proteins were deposited in complicated plaques. Although it is necessary to point out that these imaging techniques are a long way from being applicable in humans, their potential for future clinical use is enormous.

Visualization of Apoptosis in the Atheromatous Plaque

Apoptosis plays an important role both in the genesis of the atheromatous plaque and in its destabilization and rupture. In apoptosis, the cells form the so-called apoptotic bodies, which are small molecules “covered” by phosphatidylserine, for which annexin V exhibits a high affinity. There are a number of radiotracers for labeling annexin V, and animal studies showing uptake of these compounds by certain atherosclerotic plaques have been reported.⁷⁸ They have also been tested in humans, in whom the uptake of technetium-99m-labeled annexin V by carotid plaques was observed in patients

with recent TIA.⁷⁹ Endarterectomy specimens from these patients revealed the presence of the tracer in plaques with a high macrophage content. This field offers enormous potential, which, nevertheless, will need to be expanded.

Positron Emission Tomography Imaging of Plaque Macrophages

Positron emission tomography has an advantage over SPECT in that it provides better spatial resolution (4 mm to 5 mm vs 1 cm to 1.5 cm). The images obtained with PET derive from the detection of positron emission by certain radionuclides such as ¹¹C and ¹⁸F. Thus, PET offers greater potential for the visualization of atherosclerotic plaques. Deoxyglucose is a compound that “competes” with glucose as an energy substrate for metabolically active cells, there being an incremental accumulation depending on the level of metabolic activity of these cells. The combination of ¹⁸F with deoxyglucose (FDG) is highly useful in the “visualization” of cellular metabolic activity by means of PET. This technique has been widely utilized in the detection of tumors and in the assessment of myocardial glucose metabolism.⁸⁰ It has also been found to be useful for “visualizing” vascular inflammation.⁸¹ In addition to several reports on research in animals, a recent study in humans involving FDG-PET demonstrated that macrophages were responsible for FDG uptake.⁸¹ Moreover, a combination of PET and computed tomography in patients with TIA recently demonstrated that the plaques responsible for this event, not the contralateral plaques, exhibited a more marked uptake of FDG. Should this circumstance be confirmed, said technique could revolutionize the field of high-risk plaque detection, as well as monitoring of the effect of certain treatments (lipid-lowering drugs, etc).

Multidetector Computed Tomography

Aside from providing information on the calcium score, as we pointed out above, MDCT is capable of identifying noncalcified plaques when iodinated contrast agents are employed. It is also potentially capable of distinguishing different plaque components.⁸³ Ex vivo studies in human coronary arteries comparing the pathological findings in the atherosclerotic plaques with the MDCT findings have demonstrated the existence of a good correlation with the different stages of plaque formation.⁸⁴ Lipid-rich plaques can be differentiated from fibrous plaques and calcified plaques due to the differing attenuations, measured in Hounsfield units. Nevertheless, it is necessary to improve the spatial resolution of contrast-enhanced MDCT in order to increase its sensitivity and accuracy in classifying atherosclerotic plaques in coronary arteries, as well as in carotid arteries or aorta.^{85,86}

CONCLUSIONS

Atherosclerosis is a systemic disease with local manifestations. Intimate knowledge of the processes involved in the genesis and progression of the disease and its local signs enables us to undertake an early in-depth diagnostic study using imaging techniques.

Different noninvasive imaging modalities have been validated for the detection and quantification of atherosclerosis in targeted territories (carotid arteries, aorta). There are indications of the existence of a strong correlation between atherosclerotic disease extent in these territories and its presence in other territories that are less accessible, except by invasive techniques (coronary arteries), suggesting that the overall atherosclerotic burden can be quantified by noninvasive means.

Imaging technologies under development may be of aid not only in the anatomical diagnosis of the disease, but in the functional diagnosis as well (molecular imaging). This field is highly promising, as it will enable us to identify sites at high risk for the development of future events.

ACKNOWLEDGMENTS

This report has been financed in part by Fundación Conchita Rábago de Jiménez Díaz, Fundación la Caixa (Borja Ibáñez, during 2005 and 2006) and the Spanish Society of Cardiology (Antonio Pinero, during 2006). Borja Ibáñez is currently fellow-elect of the Ischemic Heart Disease section of the Sociedad Española de Cardiología (2007).

REFERENCES

1. McGill HC Jr, McMahan CA. Determinants of atherosclerosis in the young. Pathobiological Determinants of Atherosclerosis in Youth (PDAY) Research Group. *Am J Cardiol.* 1998;82:30T-6T.
2. Enos WF, Holmes RH, Beyer J. Coronary disease among United States soldiers killed in action in Korea; preliminary report. *J Am Med Assoc.* 1953;152:1090-3.
3. Stary HC, Chandler AB, Glagov S, Guyton JR, Insull W, Jr., Rosenfeld ME, et al. A definition of initial, fatty streak, and intermediate lesions of atherosclerosis. A report from the Committee on Vascular Lesions of the Council on Arteriosclerosis, American Heart Association. *Circulation.* 1994;89:2462-78.
4. Lusis AJ. Atherosclerosis. *Nature.* 2000;407:233-41.
5. Hutter R, Valdiviezo C, Sauter BV, Savontaus M, Cheresnev I, Carrick FE, et al. Caspase-3 and tissue factor expression in lipid-rich plaque macrophages: evidence for apoptosis as link between inflammation and atherothrombosis. *Circulation.* 2004;109:2001-8.
6. Skalen K, Gustafsson M, Rydberg EK, Hultén LM, Wiklund O, Innerarity TL, et al. Subendothelial retention of atherogenic lipoproteins in early atherosclerosis. *Nature.* 2002;417:750-4.
7. Leitinger N. Oxidized phospholipids as modulators of inflammation in atherosclerosis. *Curr Opin Lipidol.* 2003;14:421-30.
8. Geng YJ, Phillips JE, Mason RP, Casscells SW. Cholesterol crystallization and macrophage apoptosis: implication for atherosclerotic plaque instability and rupture. *Biochem Pharmacol.* 2003;66:1485-92.
9. Behrendt D, Ganz P. Endothelial function. From vascular biology to clinical applications. *Am J Cardiol.* 2002;90:40L-8L.

10. Weiss N, Keller C, Hoffmann U, Loscalzo J. Endothelial dysfunction and atherothrombosis in mild hyperhomocysteinemia. *Vasc Med*. 2002;7:227-39.
11. Wentzel JJ, Corti R, Fayad ZA, Wisdom P, Macaluso F, Winkelman MO, et al. Does shear stress modulate both plaque progression and regression in the thoracic aorta? Human study using serial magnetic resonance imaging. *J Am Coll Cardiol*. 2005;45:846-54.
12. Dai G, Kaazempur-Mofrad MR, Natarajan S, Zhang Y, Vaughn S, Blackman BR, et al. Distinct endothelial phenotypes evoked by arterial waveforms derived from atherosclerosis-susceptible and resistant regions of human vasculature. *Proc Natl Acad Sci U S A*. 2004;101:14871-6.
13. Cybulsky MI, Gimbrone MA Jr. Endothelial expression of a mononuclear leukocyte adhesion molecule during atherogenesis. *Science*. 1991;251:788-91.
14. Smith JD, Trogan E, Ginsberg M, Grigaux C, Tian J, Miyata M. Decreased atherosclerosis in mice deficient in both macrophage colony-stimulating factor (op) and apolipoprotein E. *Proc Natl Acad Sci U S A*. 1995;92:8264-8.
15. Glagov S, Weisenberg E, Zarins CK, Stankunavicius R, Kolettis GJ. Compensatory enlargement of human atherosclerotic coronary arteries. *N Engl J Med*. 1987;316:1371-5.
16. Helft G, Worthley SG, Fuster V, Fayad ZA, Zaman AG, Corti R, et al. Progression and regression of atherosclerotic lesions: monitoring with serial noninvasive magnetic resonance imaging. *Circulation*. 2002;105:993-8.
17. de GE, Hovingh GK, Wiegman A, Duriez P, Smit AJ, Fruchart JC, Kastelein JJ. Measurement of arterial wall thickness as a surrogate marker for atherosclerosis. *Circulation*. 2004;109:III33-8.
18. Baldassarre D, Amato M, Bondioli A, Sirtori CR, Tremoli E. Carotid artery intima-media thickness measured by ultrasonography in normal clinical practice correlates well with atherosclerosis risk factors. *Stroke*. 2000;31:2426-30.
19. Nissen SE, Yock P. Intravascular ultrasound: novel pathophysiological insights and current clinical applications. *Circulation*. 2001;103:604-16.
20. Pignoli P, Tremoli E, Poli A, Oreste P, Paoletti R. Intimal plus medial thickness of the arterial wall: a direct measurement with ultrasound imaging. *Circulation*. 1986;74:1399-406.
21. Wendelhag I, Gustavsson T, Suurkula M, Berglund G, Wikstrand J. Ultrasound measurement of wall thickness in the carotid artery: fundamental principles and description of a computerized analysing system. *Clin Physiol*. 1991;11:565-77.
22. Persson J, Formgren J, Israelsson B, Berglund G. Ultrasound-determined intima-media thickness and atherosclerosis. Direct and indirect validation. *Arterioscler Thromb*. 1994;14:261-4.
23. Kanters SD, Algra A, van Leeuwen MS, Banga JD. Reproducibility of in vivo carotid intima-media thickness measurements: a review. *Stroke*. 1997;28:665-71.
24. Tang R, Hennig M, Thomasson B, Scherz R, Ravinotto R, Catalini R, et al. Baseline reproducibility of B-mode ultrasonic measurement of carotid artery intima-media thickness: the European Lacidipine Study on Atherosclerosis (ELSA). *J Hypertens*. 2000;18:197-201.
25. Spacil J, Ceska R, Petrasko J, Sobra J. The effect of four-year hypolipidaemic treatment on the intimal thickness of the common carotid artery in patients with familiar hyperlipidaemia. *Int Angiol*. 1999;18:313-9.
26. Bots ML, Witteman JC, Grobbee DE. Carotid intima-media wall thickness in elderly women with and without atherosclerosis of the abdominal aorta. *Atherosclerosis*. 1993;102:99-105.
27. Bots ML, Hofman A, Grobbee DE. Common carotid intima-media thickness and lower extremity arterial atherosclerosis. The Rotterdam Study. *Arterioscler Thromb*. 1994;14:1885-91.
28. Allan PL, Mowbray PI, Lee AJ, Fowkes FG. Relationship between carotid intima-media thickness and symptomatic and asymptomatic peripheral arterial disease. The Edinburgh Artery Study. *Stroke*. 1997;28:348-53.
29. Mattace RF, Rosato M, Talerico A, Cotronei P, Mattace R. Intimal-medial thickness of the common carotid arteries and lower limbs atherosclerosis in the elderly. *Minerva Cardioangiol*. 1999;47:321-7.
30. Cuspidi C, Boselli L, Bragato R, Lonati L, Sampieri L, Boccione M, et al. Echocardiographic and ultrasonographic evaluation of cardiac and vascular hypertrophy in patients with essential hypertension. *Cardiology*. 1992;80:305-11.
31. Vaudo G, Schillaci G, Evangelista F, Pasqualini L, Verdecchia P, Mannarino E. Arterial wall thickening at different sites and its association with left ventricular hypertrophy in newly diagnosed essential hypertension. *Am J Hypertens*. 2000;13:324-31.
32. Belhassen L, Carville C, Pelle G, Monin JL, Teiger E, Duval-Moulin AM, et al. Evaluation of carotid artery and aortic intima-media thickness measurements for exclusion of significant coronary atherosclerosis in patients scheduled for heart valve surgery. *J Am Coll Cardiol*. 2002;39:1139-44.
33. Fazio GP, Redberg RF, Winslow T, Schiller NB. Transesophageal echocardiographically detected atherosclerotic aortic plaque is a marker for coronary artery disease. *J Am Coll Cardiol*. 1993;21:144-50.
34. O'Leary DH, Polak JF, Kronmal RA, Manolio TA, Burke GL, Wolfson SK Jr. Carotid-artery intima and media thickness as a risk factor for myocardial infarction and stroke in older adults. Cardiovascular Health Study Collaborative Research Group. *N Engl J Med*. 1999;340:14-22.
35. Khoury Z, Schwartz R, Gottlieb S, Chenzbraun A, Stern S, Keren A. Relation of coronary artery disease to atherosclerotic disease in the aorta, carotid, and femoral arteries evaluated by ultrasound. *Am J Cardiol*. 1997;80:1429-33.
36. Burke GL, Evans GW, Riley WA, Sharrett AR, Howard G, Barnes RW, et al. Arterial wall thickness is associated with prevalent cardiovascular disease in middle-aged adults. The Atherosclerosis Risk in Communities (ARIC) Study. *Stroke*. 1995;26:386-91.
37. Nagai Y, Metter EJ, Earley CJ, Kemper MK, Becker LC, Lakatta EG, Fleg JL. Increased carotid artery intimal-medial thickness in asymptomatic older subjects with exercise-induced myocardial ischemia. *Circulation*. 1998;98:1504-9.
38. Crouse JR, III, Craven TE, Hagan AP, Bond MG. Association of coronary disease with segment-specific intimal-medial thickening of the extracranial carotid artery. *Circulation*. 1995;92:1141-7.
39. Taylor AJ, Kent SM, Flaherty PJ, Coyle LC, Markwood TT, Vernalis MN. ARBITER: Arterial Biology for the Investigation of the Treatment Effects of Reducing Cholesterol: a randomized trial comparing the effects of atorvastatin and pravastatin on carotid intima medial thickness. *Circulation*. 2002;106:2055-60.
40. Salonen R, Nyyssonen K, Porkkala E, Rummukainen J, Belder R, Park JS, Salonen JT. Kuopio Atherosclerosis Prevention Study (KAPS). A population-based primary preventive trial of the effect of LDL lowering on atherosclerotic progression in carotid and femoral arteries. *Circulation*. 1995;92:1758-64.
41. Jukema JW, Bruschke AV, van Boven AJ, Reiber JH, Bal ET, Zwinderman AH, et al. Effects of lipid lowering by pravastatin on progression and regression of coronary artery disease in symptomatic men with normal to moderately elevated serum cholesterol levels. The Regression Growth Evaluation Statin Study (REGRESS). *Circulation*. 1995;91:2528-40.
42. de GE, Jukema JW, Montauban van Swijndregt AD, Zwinderman AH, Ackerstaff RG, van der Steen AF, et al. B-mode ultrasound assessment of pravastatin treatment effect on carotid and femoral artery walls and its correlations with coronary arteriographic findings: a report of the Regression Growth Evaluation Statin Study (REGRESS). *J Am Coll Cardiol*. 1998;31:1561-7.
43. Ross RF, Young TF. The nature and detection of mycoplasma immunogens. *Vet Microbiol*. 1993;37:369-80.
44. Schmermund A, Erbel R, Silber S. Age and gender distribution of coronary artery calcium measured by four-slice computed tomography in 2,030 persons with no symptoms of coronary artery disease. *Am J Cardiol*. 2002;90:168-73.

45. Kopp AF, Ohnesorge B, Becker C, Schroder S, Heuschmid M, Kuttner A, et al. Reproducibility and accuracy of coronary calcium measurements with multi-detector row versus electron-beam CT. *Radiology*. 2002;225:113-9.
46. Agatston AS, Janowitz WR, Hildner FJ, Zusmer NR, Viamonte M Jr, Detrano R. Quantification of coronary artery calcium using ultrafast computed tomography. *J Am Coll Cardiol*. 1990;15:827-32.
47. Hong C, Becker CR, Schoepf UJ, Ohnesorge B, Bruening R, Reiser MF. Coronary artery calcium: absolute quantification in nonenhanced and contrast-enhanced multi-detector row CT studies. *Radiology*. 2002;223:474-80.
48. Arad Y, Goodman KJ, Roth M, Newstein D, Guerci AD. Coronary calcification, coronary disease risk factors, C-reactive protein, and atherosclerotic cardiovascular disease events: the St. Francis Heart Study. *J Am Coll Cardiol*. 2005;46:158-65.
49. Wayhs R, Zelinger A, Raggi P. High coronary artery calcium scores pose an extremely elevated risk for hard events. *J Am Coll Cardiol*. 2002;39:225-30.
50. Fuster V, Fayad ZA, Moreno PR, Poon M, Corti R, Badimon JJ. Atherothrombosis and high-risk plaque: Part II: approaches by noninvasive computed tomographic/magnetic resonance imaging. *J Am Coll Cardiol*. 2005;46:1209-18.
51. Bild DE, Detrano R, Peterson D, Guerci A, Liu K, Shahar E, et al. Ethnic differences in coronary calcification: the Multi-Ethnic Study of Atherosclerosis (MESA). *Circulation*. 2005;111:1313-20.
52. Greenland P, Abrams J, Aurigemma GP, Bond MG, Clark LT, Criqui MH, et al. Prevention Conference V: Beyond secondary prevention: identifying the high-risk patient for primary prevention: noninvasive tests of atherosclerotic burden: Writing Group III. *Circulation*. 2000;101:E16-E22.
53. Executive Summary of The Third Report of The National Cholesterol Education Program (NCEP) Expert Panel on Detection, Evaluation, And Treatment of High Blood Cholesterol In Adults (Adult Treatment Panel III). *JAMA*. 2001;285:2486-97.
54. Hecht HS, Budoff MJ, Berman DS, Ehrlich J, Rumberger JA. Coronary artery calcium scanning: Clinical paradigms for cardiac risk assessment and treatment. *Am Heart J*. 2006;151:1139-46.
55. Greenland P, Gaziano JM. Clinical practice. Selecting asymptomatic patients for coronary computed tomography or electrocardiographic exercise testing. *N Engl J Med*. 2003;349:465-73.
56. Taylor AJ, Bindeman J, Feuerstein I, Cao F, Brazaitis M, O'Malley PG. Coronary calcium independently predicts incident premature coronary heart disease over measured cardiovascular risk factors: mean three-year outcomes in the Prospective Army Coronary Calcium (PACC) project. *J Am Coll Cardiol*. 2005;46:807-14.
57. Raggi P, Davidson M, Callister TQ, Welty FK, Bachmann GA, Hecht H, et al. Aggressive versus moderate lipid-lowering therapy in hypercholesterolemic postmenopausal women: Beyond Endorsed Lipid Lowering with EBT Scanning (BELLES). *Circulation*. 2005;112:563-71.
58. Fayad ZA, Fuster V. Clinical imaging of the high-risk or vulnerable atherosclerotic plaque. *Circ Res*. 2001;89:305-16.
59. Fuster V, Kim RJ. Frontiers in cardiovascular magnetic resonance. *Circulation*. 2005;112:135-44.
60. Yuan C, Mitsumori LM, Ferguson MS, Polissar NL, Echelard D, Ortiz G, et al. In vivo accuracy of multispectral magnetic resonance imaging for identifying lipid-rich necrotic cores and intraplaque hemorrhage in advanced human carotid plaques. *Circulation*. 2001;104:2051-6.
61. Yuan C, Zhang SX, Polissar NL, Echelard D, Ortiz G, Davis JW, et al. Identification of fibrous cap rupture with magnetic resonance imaging is highly associated with recent transient ischemic attack or stroke. *Circulation*. 2002;105:181-5.
62. Fayad ZA, Fuster V, Nikolaou K, Becker C. Computed tomography and magnetic resonance imaging for noninvasive coronary angiography and plaque imaging: current and potential future concepts. *Circulation*. 2002;106:2026-34.
63. Fayad ZA, Nahar T, Fallon JT, Goldman M, Aguinaldo JG, Badimon JJ, et al. In vivo magnetic resonance evaluation of atherosclerotic plaques in the human thoracic aorta: a comparison with transesophageal echocardiography. *Circulation*. 2000;101:2503-9.
64. Corti R, Fayad ZA, Fuster V, Worthley SG, Helft G, Chesebro J, et al. Effects of lipid-lowering by simvastatin on human atherosclerotic lesions: a longitudinal study by high-resolution, noninvasive magnetic resonance imaging. *Circulation*. 2001;104:249-52.
65. Corti R, Fuster V, Fayad ZA, Worthley SG, Helft G, Smith D, et al. Lipid lowering by simvastatin induces regression of human atherosclerotic lesions: two years' follow-up by high-resolution noninvasive magnetic resonance imaging. *Circulation*. 2002;106:2884-7.
66. Choudhury RP, Fuster V, Fayad ZA. Molecular, cellular and functional imaging of atherothrombosis. *Nat Rev Drug Discov*. 2004;3:913-25.
67. Weissleder R, Mahmood U. Molecular imaging. *Radiology*. 2001;219:316-33.
68. Winter PM, Morawski AM, Caruthers SD, Fuhrhop RW, Zhang H, Williams TA, et al. Molecular imaging of angiogenesis in early-stage atherosclerosis with alpha(v)beta3-integrin-targeted nanoparticles. *Circulation*. 2003;108:2270-4.
69. Nakashima Y, Raines EW, Plump AS, Breslow JL, Ross R. Upregulation of VCAM-1 and ICAM-1 at atherosclerosis-prone sites on the endothelium in the ApoE-deficient mouse. *Arterioscler Thromb Vasc Biol*. 1998;18:842-51.
70. Iiyama K, Hajra L, Iiyama M, Li H, DiChiara M, Medoff BD, Cybulsky MI. Patterns of vascular cell adhesion molecule-1 and intercellular adhesion molecule-1 expression in rabbit and mouse atherosclerotic lesions and at sites predisposed to lesion formation. *Circ Res*. 1999;85:199-207.
71. Sipkins DA, Gijbels K, Tropper FD, Bednarski M, Li KC, Steinman L. ICAM-1 expression in autoimmune encephalitis visualized using magnetic resonance imaging. *J Neuroimmunol*. 2000; 104:1-9.
72. Sibson NR, Blamire AM, Bernades-Silva M, Laurent S, Boutry S, Muller RN, et al. MRI detection of early endothelial activation in brain inflammation. *Magn Reson Med*. 2004;51:248-52.
73. Ruehm SG, Corot C, Vogt P, Kolb S, Debatin JF. Magnetic resonance imaging of atherosclerotic plaque with ultrasmall superparamagnetic particles of iron oxide in hyperlipidemic rabbits. *Circulation*. 2001;103:415-22.
74. Moreno PR, Falk E, Palacios IF, Newell JB, Fuster V, Fallon JT. Macrophage infiltration in acute coronary syndromes. Implications for plaque rupture. *Circulation*. 1994;90:775-8.
75. Kooi ME, Cappendijk VC, Cleutjens KB, Kessels AG, Kitslaar PJ, Borgers M, et al. Accumulation of ultrasmall superparamagnetic particles of iron oxide in human atherosclerotic plaques can be detected by in vivo magnetic resonance imaging. *Circulation*. 2003;107:2453-8.
76. Davies JR, Rudd JH, Weissberg PL, Narula J. Radionuclide imaging for the detection of inflammation in vulnerable plaques. *J Am Coll Cardiol*. 2006;47:C57-C68.
77. Schafers M, Riemann B, Kopka K, Breyholz HJ, Wagner S, Schafers KP, et al. Scintigraphic imaging of matrix metalloproteinase activity in the arterial wall in vivo. *Circulation*. 2004;109:2554-59.
78. Kolodgie FD, Petrov A, Virmani R, Narula N, Verjans JW, Weber DK, et al. Targeting of apoptotic macrophages and experimental atheroma with radiolabeled annexin V: a technique with potential for noninvasive imaging of vulnerable plaque. *Circulation*. 2003;108:3134-9.
79. Kietseleer BL, Reutelingsperger CP, Heidendal GA, Daemen MJ, Mess WH, Hofstra L, Narula J. Noninvasive detection of plaque instability with use of radiolabeled annexin A5 in patients with carotid-artery atherosclerosis. *N Engl J Med*. 2004;350:1472-3.
80. Phelps ME, Hoffman EJ, Selin C, Huang SC, Robinson G, MacDonald N, et al. Investigation of [18F]2-fluoro-2-deoxyglucose for the measure of myocardial glucose metabolism. *J Nucl Med*. 1978;19:1311-9.

81. Rudd JH, Warburton EA, Fryer TD, Jones HA, Clark JC, Antoun N, et al. Imaging atherosclerotic plaque inflammation with [¹⁸F]-fluorodeoxyglucose positron emission tomography. *Circulation*. 2002;105:2708-11.
82. Ogawa M, Ishino S, Mukai T, Asano D, Teramoto N, Watabe H, et al. (¹⁸F)-FDG accumulation in atherosclerotic plaques: immunohistochemical and PET imaging study. *J Nucl Med*. 2004;45:1245-50.
83. Nieman K, van der LA, Pattynama PM, de Feyter PJ. Noninvasive visualization of atherosclerotic plaque with electron beam and multislice spiral computed tomography. *J Interv Cardiol*. 2003;16:123-8.
84. Becker CR, Nikolaou K, Muders M, Babaryka G, Crispin A, Schoepf UJ, et al. Ex vivo coronary atherosclerotic plaque characterization with multi-detector-row CT. *Eur Radiol*. 2003;13:2094-2098.
85. Achenbach S, Moselewski F, Ropers D, Ferencik M, Hoffmann U, MacNeill B, et al. Detection of calcified and noncalcified coronary atherosclerotic plaque by contrast-enhanced, submillimeter multidetector spiral computed tomography: a segment-based comparison with intravascular ultrasound. *Circulation*. 2004;109:14-7.
86. Viles-Gonzalez JF, Poon M, Sanz J, Rius T, Nikolaou K, Fayad ZA, et al. In vivo 16-slice, multidetector-row computed tomography for the assessment of experimental atherosclerosis: comparison with magnetic resonance imaging and histopathology. *Circulation*. 2004;110:1467-72.