

# N-acetylcysteine: Short-Term Clinical Benefits After Coronary Angiography in High-Risk Renal Patients

Nieves Carbonell,<sup>a</sup> Rafael Sanjuán,<sup>a</sup> Marisa Blasco,<sup>a</sup> Ángela Jordá,<sup>a</sup> and Alfonso Miguel<sup>b</sup>

<sup>a</sup>Unidad Coronaria y de Medicina Intensiva, Hospital Clínico Universitario, Valencia, Spain

<sup>b</sup>Servicio de Nefrología, Hospital Clínico Universitario, Valencia, Spain

**Introduction and objectives.** Previous studies on the role of N-acetylcysteine in the prevention of contrast-induced nephropathy after coronary angiography and on the drug's long-term effects have produced contradictory findings. The aim of this study was to clarify the benefits of N-acetylcysteine.

**Methods.** A prospective, randomized, double-blind study was carried out in patients with chronic renal failure (plasma creatinine =  $\geq 1.4$  mg/dL) who underwent coronary angiography. This study concerns the second arm of the main study. Findings on the patients with normal renal function have been published previously. As before, patients were randomly assigned to receive either N-acetylcysteine, 600 mg every 12 h intravenously, or placebo. The primary end-point was the development of contrast-induced nephropathy.

**Results.** The study included 81 patients (39 on N-acetylcysteine, 42 on placebo) with comparable baseline clinical characteristics. The overall incidence of contrast-induced nephropathy was 14.8% (12 patients): 5.1% (2 patients) in the N-acetylcysteine group and 23.8% (10 patients) in the placebo group (odds ratio [OR] = 0.17; 95% confidence interval [CI], 0.03–0.84;  $P=0.027$ ). One patient (1.2%) in the latter group required dialysis while in the coronary unit. Multivariate analysis showed that N-acetylcysteine was an independent protective factor against the composite end-point of contrast-induced nephropathy, need for dialysis and mortality during the coronary unit stay (OR=0.20; 95% CI, 0.04–0.97;  $P=0.04$ ). Nevertheless, no significant difference was observed between the N-acetylcysteine and placebo groups in the rates of in-hospital (10.3% vs 16.7%, respectively) or 1-year mortality (15.4% vs 21.4%, respectively).

**Conclusions.** Prophylactic administration of N-acetylcysteine provided significant short-term clinical benefits in high-risk renal patients who underwent coronary angiography.

**Key words:** *Coronary angiography. Chronic renal failure. N-acetylcysteine. Contrast-induced nephropathy.*

SEE EDITORIAL ON PAGES 9-11

Correspondence: Dra. N. Carbonell.  
Unidad Coronaria y de Medicina Intensiva. Hospital Clínico Universitario.  
Av. Blasco Ibáñez, 17. 46010 Valencia. España.  
E-mail: edurnecarbonell@yahoo.es

Received November 10, 2008.

Accepted for publication August 5, 2009.

## N-acetilcisteína: beneficio clínico a corto plazo tras coronariografía en pacientes renales de alto riesgo

**Introducción y objetivos.** El papel de la N-acetilcisteína en la prevención de la nefropatía por contraste tras coronariografía y sus efectos a largo plazo se presentan con resultados contradictorios en la literatura previa. Este estudio pretende clarificar su beneficio clínico.

**Métodos.** Estudio prospectivo, aleatorizado y a doble ciego de pacientes sometidos a angiografía coronaria con insuficiencia renal crónica (creatinina plasmática  $\geq 1,4$  mg/dl). Representa así el segundo brazo del diseño del estudio principal, previamente publicado, respecto al brazo de pacientes con función renal normal. Igualmente, se los aleatorizó a recibir N-acetilcisteína intravenosa (600 mg/12 h) o placebo. El objetivo principal es el desarrollo de nefropatía inducida por contraste.

**Resultados.** Se incluyó a 81 pacientes (N-acetilcisteína, 39 pacientes; placebo, 42 pacientes), equiparables respecto a las características clínicas basales. La incidencia total de nefropatía por contraste fue del 14,8% (12 pacientes), el 5,1% (2 pacientes) en el grupo con N-acetilcisteína y el 23,8% (10 pacientes) en el grupo a placebo (odds ratio [OR] = 0,17; intervalo de confianza [IC] del 95%, 0,03-0,84;  $p = 0,027$ ). Un paciente de este último grupo requirió diálisis mientras se encontraba ingresado en la unidad coronaria (1,2%). En el análisis multivariable, la N-acetilcisteína resultó factor protector independiente de la variable compuesta por nefropatía inducida por contraste, necesidad de diálisis y mortalidad durante la estancia en la unidad coronaria (OR = 0,20; IC del 95%, 0,04-0,97;  $p = 0,04$ ). Sin embargo, no se observaron diferencias significativas en cuanto a mortalidad hospitalaria y al año de seguimiento (el 10,3 frente al 16,7% y el 15,4 frente al 21,4% en los grupos con N-acetilcisteína y placebo respectivamente).

**Conclusiones.** La administración profiláctica de N-acetilcisteína conlleva importantes beneficios clínicos a corto plazo en los pacientes renales con alto riesgo sometidos a angiografía coronaria.

**Palabras clave:** *Angiografía coronaria. Insuficiencia renal crónica. N-acetilcisteína. Nefropatía inducida por contraste.*

## ABBREVIATIONS

CIN: contrast-induced nephropathy  
 CM: contrast medium  
 CRF: chronic renal failure  
 NAC: N-acetylcysteine  
 NRF: normal renal function  
 SrCr: serum creatinine concentration

## INTRODUCTION

The increasing use of iodinated contrast medium (CM) in radiological procedures, particularly during coronary angiography, has raised concerns about the growing incidence of a potential complication known as contrast-induced nephropathy (CIN).

As the third leading cause of hospital-acquired acute renal failure,<sup>1</sup> CIN has a serious impact on patient outcomes including death, myocardial infarction and stroke, especially in those requiring dialysis after the procedure.<sup>2-5</sup> Overall incidence of CIN following coronary angiography varies greatly (2%-50%), with baseline presence of chronic renal disease (CRD) and diabetes mellitus being the most important risk factors.<sup>2</sup> Chronic renal disease has been considered both necessary and sufficient to cause CIN, whereas diabetes has been seen as amplifying it.<sup>6</sup> Other risk factors such as hypotension, intra-aortic balloon pump, congestive heart failure, age >75 years, anemia, and CM volume should also be considered.<sup>6,7</sup>

Moreover, CIN represents one of the few hospital-acquired types of kidney failure physicians can prevent. The cornerstone of prophylaxis in both high- and low-risk patients is adequate parenteral volume repletion. Other pharmacological measures—such as prophylactic n-acetylcysteine (NAC) administration in patients with CRD because NAC is both an antioxidant and vasodilator—have been evaluated in randomized, controlled trials with greatly varied results.<sup>8-23</sup>

Hypothetically, the direct effect of NAC on renal tubular creatinine secretion or muscle metabolism could influence the protective effect of NAC against CIN incidence when evaluating serum creatinine concentration (SrCr).<sup>24</sup> Although other renal injury markers have been proposed,<sup>25,26</sup> a recent paper concluded that SrCr is a good clinical marker of CIN detection.<sup>27</sup>

Consequently, we conducted a randomized prospective study to test the hypothesis that intravenous NAC administration would prevent CIN in high-risk coronary patients with CRD who undergo coronary angiography. Other short- and long-term clinical effects were also evaluated.

## METHODS

### Patients

The Hospital Clínico Universitario de Valencia, Spain, is a 600-bed tertiary referral center. The study prospectively enrolled 90 patients admitted to the Coronary Unit (CU) with acute coronary syndrome and DRD and referred for cardiac catheterization.

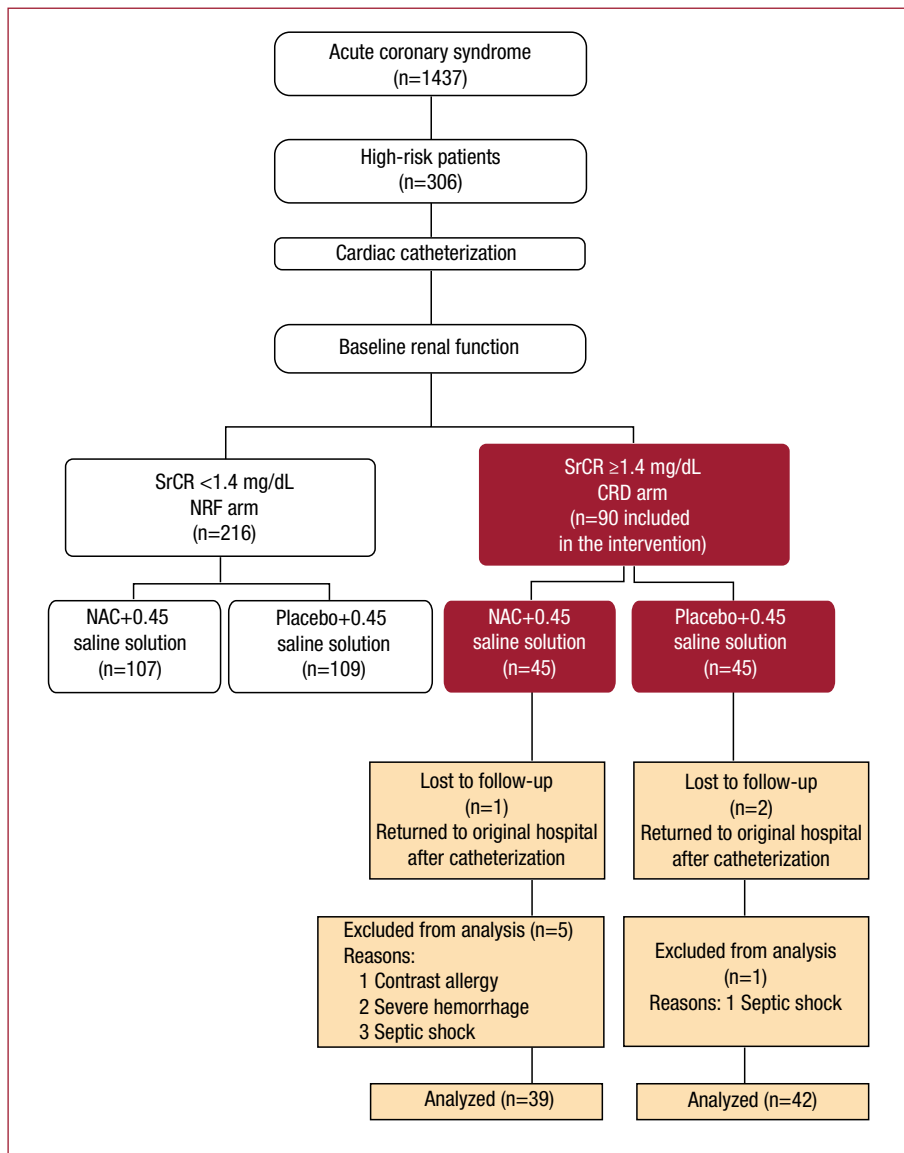
To fulfill CONSORT recommendations,<sup>28</sup> Figure 1 presents a flowchart of patient enrollments. We included coronary patients considered high-risk following diagnosis of angina at rest or post-myocardial infarction, or receiving thrombolytic therapy after failed revascularization and indicated for emergency cardiac catheterization. We defined CRD as stable SrCr  $\geq 1.4$  mg/dL (123.76  $\mu\text{mol/L}$ )<sup>9</sup> or  $< 60$  mL/min creatinine clearance calculated with the Cockcroft-Gault formula.<sup>29</sup> Major exclusion criteria were hemodynamic instability (systolic blood pressure  $< 90$  mm Hg), known NAC or contrast agent allergies, untreated gastrointestinal bleeding, and/or previous antibiotic treatment with theophylline, mannitol or nephrotoxic drugs.

Data was collected from March 1, 2002 to December 31, 2006 and—except for 1-year mortality—collection ended upon discharge. The study protocol was approved by the local ethics committee and informed consent obtained from all patients or their relatives.

### Study Design

This study presents the CRD arm of the main protocol study design (Figure 1). Results on the normal renal function (NRF) population, (the NRF arm), appear elsewhere.<sup>30</sup> The CRD arm is a randomized, double-blind, placebo-controlled trial. Patients were randomly assigned to intravenous NAC (600 mg diluted in 50 mL of 0.9% saline) or to a placebo (50 mL of 0.9% saline solution) for 30 minutes twice daily for a total of 4 doses. Hypotonic intravenous saline solution was administered at a rate of 1 mL/Kg/h at the first 6 h before the procedure and was maintained for 12 h after contrast-dosing in both CRD study groups. Randomization was with computer-generated random numbers. Analysis was based on intention-to-treat.

Levels of SrCr, plasma concentration of urea and electrolytes were recorded during the 24 h prior to catheterization and considered baseline references. Measurements were repeated at 24 and 48 h after contrast administration. The primary endpoint was development of CIN, defined as an acute increase in SrCr of  $\geq 0.5$  mg/dL (44  $\mu\text{mol/L}$ ) or  $> 25\%$  increase above baseline at 48 h after contrast administration. Secondary outcomes were CIN-induced need for



**Figure 1.** Main protocol study design. Flowchart of chronic renal disease (CRD) arm of the main study; n, number of patients in brackets; NAC, N-acetylcysteine; NRF arm, normal renal function arm of the main study; SrCr, serum creatinine concentration. (Reprinted from Carbonell N, et al,<sup>30</sup> with permission from Elsevier).

dialysis, CU mortality, and the combination of in-hospital and 1-year mortality.

Side effects during NAC administration, such as vomiting, hypotension, bronchospasm, fever, dizziness and flushing, or itching, were recorded. In the catheterization laboratory, non-ionic, low-osmolality CM iopromide (Ultravist, 370 mg iodine/mL, Schering AG, Germany) was used in all patients.

### Statistical Analysis

Statistical analysis used SPSS 9.0. Continuous data are expressed as mean (SD) or median (range) and categorical data as percentages. Continuous variables with normal distributions were analyzed with the Student *t* test and categorical variables with

Fisher's exact test and  $\chi^2$ . The Kolmogorov-Smirnov test showed SrCr was not normally distributed so the non-parametric Wilcoxon and Mann-Whitney *U* tests were used to assess differences between the groups. We calculated the SrCr increase/decrease as SrCr at 48 h minus baseline SrCr divided by baseline SrCr.

The alpha significance level was set at .05 and 1- $\beta$  power at .80. We calculated that 45 patients per CRD-arm group were required for an acetylcysteine versus placebo study. Sample size was estimated from the C4-Study Design Pack program (Copyright GlaxoWellcome, SA) and was a projection based on Tepel et al<sup>8</sup> and Goldenberg et al,<sup>21</sup> which demonstrated the probability of developing CIN in the NAC group was  $P_1=.02$ , and in the placebo group  $P_2=.21$ .

Risk factors were evaluated with univariate and multivariate analysis (multiple logistic stepwise regression). The relationship between potential confounding factors and composite endpoint development was determined by constructing a Cox Proportional Hazards model.

## RESULTS

Full data were obtained and analyzed for 81 patients (NAC=39; placebo=42); 9 of the original randomized 90 were excluded due to partial lack of data (Figure 1). Three patients were lost in the follow-up because they returned to their original hospitals after the procedure; 6 were excluded (1 developed an unknown allergy to CM; 2 presented hemorrhage secondary to thrombolytic therapy; 3 developed septic shock postprocedure). Baseline clinical and biochemical characteristics of the patient population are in Table 1. The 2 groups were comparable in terms of demographic features, cardiovascular risk factors, concomitant medication, analytical data, and data related to catheterization. Fifteen of the 29 patients (51.7%) diagnosed with ST-segment elevation myocardial infarction received thrombolytic therapy; 3 (20%) required rescue angioplasty. Table 1 shows the CM volume delivered in each study group. This was significantly higher in patients needing percutaneous interventions versus patients undergoing diagnostic coronary angiography (204.41 [23.7] vs 124.6 [11.8] [ $P=.001$ ]). However, the 2 main study groups were comparable in terms of the procedure employed (Table 1).

Overall CIN incidence was 14.8% (12): 5.1% (2) in the NAC group and 23.8% (10) in the placebo group ( $P=.027$ , OR=0.17 [0.03-0.84]) (Table 2). No NAC side effects were found. Mean SrCr decreased from 2.01 (0.77) to 1.90 (0.83) mg/dL at 48 h after CM administration in NAC-treated patients, whereas it increased from 1.87 (0.70) to 2.15 (0.94) mg/dL in the placebo group ( $P=NS$ ) (Figure 2). No significant changes were recorded in serum urea nitrogen concentration at 48 h after cardiac catheterization which fell from 80 (36) to 76 (37) mg/dL in the NAC group but rose from 67 (23) to 71 (27) mg/dL in the placebo group.

Median CU stay was 5 (1-20) and 4 (2-27) days in the NAC and placebo groups respectively, and median hospital stay was 10 (1-42) and 10 (2-73) days, respectively ( $P=.20$ ). One CIN patient required dialysis while in CU (1.2%). This patient belonged to the placebo group and died 1 year later. The other CIN patient death occurred at 1 month, also in the placebo group (overall CIN-group mortality was 17%). Three CIN and 2 placebo group patients (7.7% vs 4.8%) died in the CU ( $P=.18$ ). Stepwise logistic

regression identified NAC as a protective factor for the composite short-term endpoint of CIN, need-for-dialysis and CU mortality (OR=0.20, 95% confidence interval, 0.04-0.97;  $P=.04$ ). Coronary artery bypass graft surgery was performed during the hospitalization in 7 NAC and 12 placebo group patients (17.9% vs 28.6%) ( $P=.25$ ). However, we found no differences in mid- and long-term mortality (Table 2). Cardiac death was diagnosed in 1 of the 4 patients who died after discharge.

## DISCUSSION

The increased use of iodinated CM in coronary angiography still causes concern over the development of CIN, especially in urgent cases when prophylactic hydration is not always possible, or in patients with a high-risk CIN profile (ie, patients presenting baseline CRD or congestive heart failure). Because of its favorable side-effect profile, low cost and some positive results in randomized trials, NAC has earned its place in clinical practice with these high-risk patient groups. However, evidence of its renoprotective effect is limited and the issue remains unresolved.<sup>31</sup> Therefore, we conducted a randomized, prospective study to test the hypothesis that intravenous NAC administration would prevent CIN in high-risk coronary patients with CRD undergoing coronary angiography.

One of the outstanding findings of the current study has been its confirmation of NAC's benefits in CIN prevention, based on reducing SrCr levels. We found significantly low CIN incidence when NAC was administered prior to coronary angiography in patients with CRD (5.1% vs 23.8%), which coincides with results reported elsewhere.<sup>16</sup> However, these results contrast with the lack of additional benefits from saline hydration previously found in coronary patients with normal baseline renal function (CIN incidence 10.3% vs 10.1% in NAC and placebo groups, respectively).<sup>30</sup> This underscores the fact that NAC's preventive effect only relates to high-risk patients with baseline CRD.

Furthermore, in the CRD arm of the main study, mean SrCr decreased at 24 and 48 h after CM when NAC was employed. This is contrary to the trend observed in the NRF arm (Figure 2). The difference in creatinine level behavior found in the NAC group of both arms of the main protocol strongly argues in favor of using creatinine as a marker to assess NAC's direct renoprotective effect. We believe our study casts serious doubts on the conclusions drawn by Hoffmann et al.<sup>24</sup> Their study enrolled healthy volunteers who received NAC (without contrast dye) and reported the absence of NAC's glomerular effect on SrCr was justified by the lack of any effect

**TABLE 1. Baseline Clinical Data on Patients in the CRD Arm of the Study**

	NAC (n=39)	Placebo (n=42)	P
Age 69 (11)	70 (10)	.53	
Male (%)	31 (80)	34 (81)	.86
Body-mass index	27 (3)	27 (4)	.77
Diagnosis			
NSTEMI	29 (74.4%)	23 (54.8%)	.06
STEMI	10 (25.6%)	19 (45.2%)	.06
CVRF			
Hypertension	31 (80%)	30 (71%)	.40
Diabetes mellitus	20 (51%)	18 (43%)	.44
Dyslipidemia	12 (31%)	18 (43%)	.26
Smoking	24 (61%)	19 (43%)	.14
Peripheral vascular disease	4 (10%)	4 (9%)	.60
Concomitant medication			
ACE inhibitors	15 (38%)	15 (36%)	.78
NSAID	27 (69%)	27 (64%)	.63
Diuretics	26 (67%)	20 (48%)	.08
Nitrites	21 (54%)	26 (62%)	.46
Beta-blockers	12 (31%)	20 (48%)	.12
Calcium-channel blockers	6 (15%)	8 (19%)	.66
Statins	18 (46%)	14 (33%)	.23
Hemoglobin, g/dL	12.65 (1.99)	11.87 (1.99)	.18
Biochemical data			
SrCr, mg/dLa	2.01 (0.77)	1.87 (0.70)	.42
Urea nitrogen, mg/dL	80.23 (36.95)	67.69 (23.02)	.07
CrCl, mL/minb	39.6 (11)	39.8 (13)	.94
Catheterisation			
Coronary artery disease			
LMCA	1 (2.6%)	4 (10%)	.18
LADCA	21 (54%)	22 (54%)	.58
LCCA	17 (43%)	16 (39%)	.67
RCA	19 (49%)	18 (39%)	.66
LV EF, %	47 (16)	49 (11)	.59
Procedure type			
Coronary angiography	22 (56.4%)	25 (59.5%)	.77
PCI	17 (43.6%)	17 (40.5%)	.77
Volume of CM, mL	134.79 (13)	184.66 (21)	.06

ACE inhibitors indicates angiotensin-converting enzyme inhibitors; CM, contrast medium; CrCl, creatinine clearance; CRD, chronic renal disease; CVRF, cardiovascular risk factors; LADCA, left anterior descending coronary artery; LCCA, left circumflex coronary artery; LMCA, left main coronary artery; LVEF, left ventricular ejection fraction; NAC, N-acetylcysteine; NSTEMI, Non-ST elevation myocardial infarction; RCA, right coronary artery; STEMI, ST-elevation myocardial infarction; NSAID, non-steroidal anti-inflammatory drugs; PCI, percutaneous coronary intervention; SrCr, serum creatinine.

<sup>a</sup>To convert serum creatinine values to micromoles per liter, multiply by 88.4.

<sup>b</sup>Creatinine clearance using the Cockcroft-Gault formula.

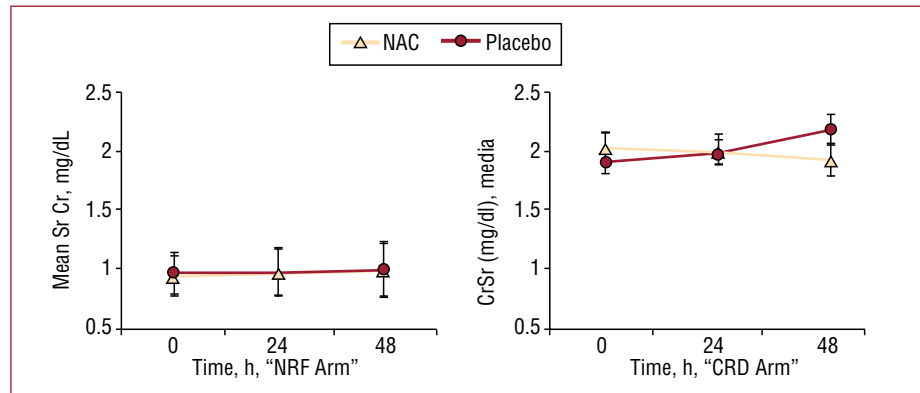
Results are expressed as n (%) or mean (SD).

**TABLE 2. Main Outcome Results in the CRD Arm of the Study**

	NAC (n=39)	Placebo (n=42)	P
CIN incidence	2 (5.1%)	10 (23.8%)	.027
Median			
CU stay	5 (1-20)	4 (2-27)	.70
Hospital stay	10 (1-42)	10 (2-76)	.20
Mortality			
In-CU	3 (7.7%)	2 (4.8%)	.18
In-hospital	4 (10.3%)	7 (16.7%)	.65
1-year	6 (15.4%)	9 (21.4%)	.67
CU dialysis	0	1 (2%)	.15

CRD indicates chronic renal disease; CU, coronary unit; NAC, N-acetylcysteine; CIN, contrast-induced nephropathy.

**Figure 2.** Changes in mean serum creatinine (SrCr) concentrations in both arms of the study. CRD arm indicates chronic renal disease arm of the main study; NAC, N-acetylcysteine; NRF arm, normal renal function arm of the main study. Values are expressed as mean (SD). The Wilcoxon-Mann-Whitney U test was used to assess differences between NAC and placebo groups in both arms of the main study. (NRF arm results reprinted from Carbonell N, et al,<sup>30</sup> with permission from Elsevier.)



on the cystatin C level at 4 h after administration. In the same year, Rickli et al<sup>25</sup> compared the kinetic differences of cystatin C and SrCr at 5, 24, and 48 h after radiocontrast was used in patients with normal to subnormal glomerular filtration rates. Their major findings were that the cystatin C increase peaked at 24 h after angiography, with a delayed increase in SrCr. They found no significant change by comparison with baseline in SrCr or cystatin C at 5 h after CM administration. Hoffman et al did not present biochemical marker data at 24 hours postprocedure, which appears to be the crucial moment to detect changes in cystatin C. Furthermore, Levin A et al<sup>26</sup> have recently found a biological effect of NAC defined by albumin excretion, suggesting this may attenuate contrast-induced glomerular or tubular injury, independently of any effect on creatinine.

We concur with Marenzi et al<sup>27</sup> who consider NAC should have a protective effect when oxidative stress induced by ischemia and reperfusion is present, rather than when it is absent, as in healthy patients.<sup>24</sup> The antioxidant effect of NAC may be the physiological explanation for the renal protection it affords.

On the other hand, the clinical benefit obtained with the new protocol for the intravenous administration of NAC in high-risk patients with CRD, which aroused controversy when it was used in patients with normal renal function,<sup>30</sup> is important for several reasons: *a)* the apparent lack of side-effects by comparison with the 14% of adverse reactions found by Baker et al when administering large intravenous doses<sup>13</sup>; *b)* the possible use of NAC in patients who present in an emergency (earlier pharmacokinetic studies establish a metabolite half-life of 6 h)<sup>32</sup>; *c)* its low oral bioavailability (20%); and *d)* the potential for patient rejection of oral NAC because of its unpleasant taste.

The second major finding of this study has been the clinical benefit associated with NAC administration in short-term follow-up. Until a few years ago there had been just one randomized study showing a significant reduction in hospitalization after CM in

the group receiving oral NAC.<sup>11</sup> Large case series and cohort studies<sup>2,4</sup> have shown patients with CIN rarely need dialysis after coronary intervention (<1% vs 14.6% when dialysis is not required) but found an association with high in-hospital mortality, while most prospective and randomized studies have failed to demonstrate any clinical benefit of NAC when analyzing these outcomes. Mehran et al<sup>7</sup> developed a simple risk score for CIN prediction and observed an exponential 13% increase in overall CIN incidence and increases in dialysis and 1-year mortality with the increased risk score. They demonstrated 0.12% and 1.09% risk of dialysis associated with 14% and 26% risk of developing CIN, respectively. These data could justify the absence of events in most studies and coincide with our results: overall CIN incidence was 14.8% and 1 patient with CIN in the placebo group required dialysis in the CU (1.2%); CIN incidence was 23.8% in this group.

Furthermore, we have identified NAC as a short-term protective factor when analyzing the composite endpoint of CIN, hospital mortality and need for urgent dialysis. Marenzi et al<sup>27</sup> enrolled consecutive patients with myocardial infarction undergoing primary angioplasty and recently demonstrated improved in-hospital evolution, as well as a dose-dependent reduction in the severity of CIN. However, mainly in the control group, they found a higher percentage of CIN incidence and short-term events than earlier studies did, with mortality much higher than the 4%-5% rate typically reported in large registries.<sup>33</sup> Although our study did not enroll exactly the same population, our 4.8% CU mortality in the placebo group is consistent with registries that reflect real clinical practice. However, the clinical benefit of NAC has not translated into a fall in adverse outcomes in long-term follow-up.

## Limitations

This study was designed to determine CIN incidence. The sample size has insufficient statistical

value to assess differences in morbidity and mortality. Although the relatively small sample size calls for caution in interpreting results, we would point out that it was determined by applying research design software using previously published results. Another limitation is the fact we did not measure cystatin C as a surrogate marker of glomerular filtration. It seems to reflect CM-induced changes in kidney function better than SrCr, which could lead to erroneous conclusions concerning NAC benefit. However, results recently obtained by Kimmel et al<sup>34</sup> are preliminary, and still have limited value due to the small sample size.

## CONCLUSIONS

In the absence of a multicenter study, we recommend the use of intravenous NAC prior to coronary angiography in high-risk patients with SrCr  $\geq 1.4$  mg/dL, especially when hydration is impossible because of their clinical characteristics.

## REFERENCES

- Nash K, Hafeez A, Hou S. Hospital-acquired renal insufficiency. *Am J Kidney Dis.* 2002;39:930-6.
- Rihal CS, Textor SC, Grill DE, Berger PB, Ting HH, Best PJ, et al. Incidence and prognostic importance of Acute Renal Failure after percutaneous coronary intervention. *Circulation.* 2002;105:2259-64.
- Gruberg L, Mintz G, Mehran R, Gangas G, Lansky AJ, Kent KM, et al. The prognostic implications of further renal function deterioration within 48 h of interventional coronary procedures in patients with pre-existent chronic renal insufficiency. *J Am Coll Cardiol.* 2000;36:1542-8.
- Mc Cullough PA, Wolyn R, Rocher LL, Levin RN, O'Neill WW. Acute renal failure after coronary intervention: Incidence, risk factors, and relationship to mortality. *Am J Med.* 1997;103:368-75.
- Bartholomew BA, Harjai KL, Dukkupati S, Boura JA, Yerkey MW, Glazier S, et al. Impact of nephropathy after percutaneous coronary intervention and a method for risk stratification. *Am J Cardiol.* 2004;93:1515-9.
- Friedewald VE, Goldfarb S, Laskey WK, Mc Cullough PA, Roberts WC. The Editor's Roundtable: contrast-induced nephropathy. *Am J Cardiol.* 2007;100:544-51.
- Mehran R, Aymong E, Nikolsky E, Lasic Z, Iakovou I, Fahy M, et al. A simple Risk Score for prediction of contrast-induced nephropathy after percutaneous Coronary Intervention. *J Am Coll Cardiol.* 2004;44:1393-9.
- Tepel M, Van der Giet M, Schwarzfeld C, Laufer U, Liermann D, Zidek W. Prevention of radiographic-contrast-induced reductions in renal function by acetylcysteine. *N Engl J Med.* 2000;343:180-4.
- Diaz-Sandoval LJ, Kosowsky BD, Losordo DW. Acetylcysteine to prevent angiography-related renal tissue injury (the APART trial). *Am J Cardiol.* 2002;89:356-8.
- Shyu KJ, Cheng JJ, Kuan P. Acetylcysteine protects against acute renal damage in patients with abnormal renal function undergoing a coronary procedure. *J Am Coll Cardiol.* 2002;40:1383-8.
- Kay J, Chow WH, Chan TM, Lo SK, Kwok OH, Yip A, et al. Acetylcysteine for prevention of acute deterioration of renal function following elective coronary angiography and intervention: a randomized controlled trial. *JAMA.* 2003;289:553-8.
- McNeill BD, Harding SA, Bazari H, Patton KK, Colon-Hernandez P, DeJoseph D, et al. Prophylaxis of contrast-induced nephropathy in patients undergoing coronary angiography. *Catheter Cardiovasc Interv.* 2003;60:458-61.
- Baker CSR, Wragg A, Kmar S, De Palma R, Baker LRI, Knight CJ. A rapid protocol for the prevention of contrast-induced renal dysfunction: the RAPPID study. *J Am Coll Cardiol.* 2003;41:2114-8.
- Briguori C, Colombo A, Violante A, Balestrieri P, Manganelli F, Paolo Elia P, et al. Standard vs double dose of N-acetylcysteine to prevent contrast agent associated nephrotoxicity. *Eur Heart J.* 2004;25:206-11.
- Briguori C, Manganelli F, Scarpato P, Elia PP, Golia B, Riviezzo G, et al. Acetylcysteine and contrast agent-associated nephrotoxicity. *J Am Coll Cardiol.* 2002;40:298-303.
- Miner SE, Dzavik V, Nguyen-Ho P, Richardson R, Mitchell J, Atchison D, et al. N-Acetylcysteine reduces contrast-associated nephropathy but not clinical events during long-term follow-up. *Am Heart J.* 2004;148:690-5.
- Recio-Mayoral A, Chaparro M, Prado B, C  zar R, M  ndez I, Banerjee D, et al. The reno-protective effect of hydration with sodium bicarbonate plus N-acetylcysteine in patients undergoing emergency percutaneous coronary intervention: the RENO Study. *J Am Coll Cardiol.* 2007;49:1283-8.
- Allaqaband S, Tumuluri R, Malik AM, Gupta A, Volkert P, Shalev I, et al. Prospective randomized study of N-acetylcysteine, fenoldopam, and saline for prevention of radiocontrast-induced nephropathy. *Cathet Cardiovasc Interv.* 2002;57:279-83.
- Durham DJ, Caputo C, Dokko J, Zaharakis T, Pahlavan M, Keltz J, et al. A randomized controlled trial of N-acetylcysteine to prevent contrast nephropathy in cardiac angiography. *Kidney International.* 2002;62:2202-7.
- Oldemeyer J, Biddle P, Wurdeman R, Mooss A, Cichowski E, Hilleman D. Acetylcysteine in the prevention of contrast-induced nephropathy after coronary angiography. *Am Heart J.* 2003;146:E23.
- Goldenberg I, Shechter M, Matetzky S, Jonas M, Adam M, Pres H, et al. Oral acetylcysteine as an adjunct to saline hydration for the prevention of contrast-induced nephropathy following coronary angiography. *Eur Heart J.* 2004;25:212-8.
- Webb J, Pate G, Humphries K, Buller CE, Shalansky S, Al-Shamari A, et al. A randomized controlled trial of intravenous N-acetylcysteine for the prevention of contrast-induced nephropathy after cardiac catheterisation: Lack of effect. *Am Heart J.* 2004;148:422-9.
- Huber W, Eckel F, Hennig M, Rosenbrock H, Wacker A, Saur D, et al. Prophylaxis of contrast material-induced nephropathy in patients in intensive care: acetylcysteine, theophylline, or both? A randomized study. *Radiology.* 2006;239:793-804.
- Hoffmann U, Fischereder M, Kruger B, Drobnik W, Kramer B. The value of N-acetylcysteine in the prevention of radiocontrast agent-induced nephropathy seems questionable. *J Am Soc Nephrol.* 2004;15:407-10.
- Rickli H, Benou K, Ammann P, Fehr T, Brunner-La Rocca HP, Petridis H, et al. Time course of serial cystatin C levels in comparison with serum creatinine after application of radiocontrast media. *Clin Nephrol.* 2004;61:98-102.
- Levin A, Pate GE, Shalansky S, Al-Shamari A, Webb JG, Buller CE, et al. N-acetylcysteine reduces urinary albumin excretion following contrast administration: evidence of biological effect. *Nephrol Dial Transplant.* 2007;22:2520-4.
- Marenzi G, Assanelli E, Marana I, Lauri G, Campodonico J, Grazi M, et al. N-acetylcysteine and contrast-induced nephropathy in primary angioplasty. *N Engl J Med.* 2006;354:2773-82.

28. Alfonso F, Segovia J, Heras M and Bermejo J. Publicación de ensayos clínicos en revistas científicas: consideraciones editoriales. *Rev Esp Cardiol.* 2006;59:1206-14.
29. Cockcroft DW, Gault MH. Prediction of creatinine clearance from serum creatinine. *Nephron.* 1976;16:31-41.
30. Carbonell N, Blasco M, Sanjuán R, Pérez-Sancho E, Sanchis J, Insa L, et al. Intravenous N-acetylcysteine for preventing contrast-induced nephropathy: A randomized trial. *Int J Cardiol.* 2007;115:57-62.
31. Tepel M, Aspelin P, Lamiere N. Contrast-Induced Nephropathy. A clinical and evidence-based approach. *Circulation.* 2006;113:1799-806.
32. Olsson B, Johansson M, Gabrielsson J, Bolme P. Pharmacokinetics and bioavailability of reduced and oxidized N-acetylcysteine. *Eur J Clin Pharmacol.* 1988;34:77-82.
33. McNamara RL, Wang Y, Herrin J, Curtis JP, Bradley EH, Magid DJ, et al. Effect of door-to-balloon time on mortality in patients with ST-segment elevation myocardial infarction. *J Am Coll Cardiol.* 2006;47:2180-6.
34. Kimmel M, Butscheid M, Brenner S, Kuhlmann U, Klotz U, Alscher D. Improved estimation of glomerular filtration rate by serum cystatin C in preventing contrast-induced nephropathy by N-acetylcysteine or zinc--preliminary results. *Nephrol Dial Transplant.* 2008;23:1241-5.