

Image in cardiology

## Leriche's Syndrome and Thoracic Aortic Mural Thrombus

### Síndrome de Leriche y trombo mural de aorta torácica

Javier Montero-Tinnirello,<sup>a,\*</sup> Manuel Vilar-Freire,<sup>b</sup> and Carlos Delgado Sánchez-Gracián<sup>c</sup>

<sup>a</sup> Departamento de Medicina Interna, Hospital Povisa, Vigo, Pontevedra, Spain

<sup>b</sup> Departamento de Cardiología, Hospital Povisa, Vigo, Pontevedra, Spain

<sup>c</sup> Departamento de Radiodiagnóstico, Hospital Povisa, Vigo, Pontevedra, Spain

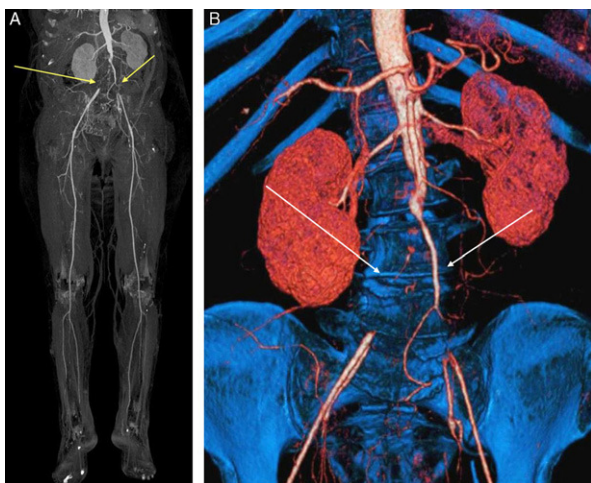


Figure 1.

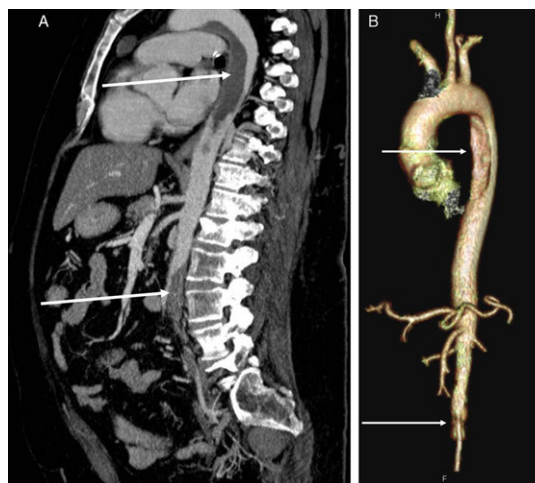


Figure 2.

A 63-year-old female presented with proximal bilateral lower extremity pain that occurred after walking and was resolved by resting in the standing position. Her past medical history was significant for obesity, hypertension, and dyslipemia. On physical examination, the bilateral pedal and posterior tibial pulses were absent, the bilateral popliteal pulses and the left femoral pulse were weak, and the right femoral pulse was not palpable. The computed tomography angiogram revealed diffuse atherosclerotic disease involving the infrarenal abdominal aorta, causing an occlusion of distal aorta and both primitive iliac arteries with posterior spontaneous revascularization (Figs. 1A, 1B); a mobile thrombus originated from the inner curve of the isthmic aorta and extended over 10 cm, occluding 65% of the lumen of the descending aorta (Figs. 2A, 2B).

Laboratory tests, including those for thrombophilia and autoimmune diseases, were normal. The patient refused surgery and acenocumarol was started.

\* Corresponding author:

E-mail address: [jjmmmontero@hotmail.com](mailto:jjmmmontero@hotmail.com) (J. Montero-Tinnirello).

Available online 8 June 2011