

Original article

Intracoronary Infusion of Thioflavin-S to Study Microvascular Obstruction in a Model of Myocardial Infarction

Arantxa Hervás,^a Elena de Dios,^a María J. Forteza,^a Gema Miñana,^a Julio Nuñez,^b Amparo Ruiz-Sauri,^c Clara Bonanad,^b Nerea Perez-Sole,^a Francisco J. Chorro,^b and Vicente Bodi^{b,*}^a Instituto de Investigación Sanitaria, INCLIVA, Valencia, Spain^b Servicio de Cardiología, Hospital Clínico Universitario, Universitat de València, INCLIVA, Valencia, Spain^c Universitat de València, INCLIVA, Valencia, Spain

Article history:

Received 23 January 2015

Accepted 21 April 2015

Available online 5 August 2015

Keywords:

Myocardial infarction

Microcirculation

Swine model

ABSTRACT

Introduction and objectives: Microvascular obstruction exerts deleterious effects after myocardial infarction. To elucidate the role of ischemia-reperfusion injury on the occurrence and dynamics of microvascular obstruction, we performed a preliminary methodological study to accurately define this process in an *in vivo* model.**Methods:** Myocardial infarction was induced in swine by means of 90-min of occlusion of the mid left anterior descending coronary artery using angioplasty balloons. Intracoronary infusion of thioflavin-S was applied and compared with traditional intra-aortic or intraventricular instillation. The left anterior descending coronary artery perfused area and microvascular obstruction were quantified in groups with no reperfusion (thioflavin-S administered through the lumen of an inflated over-the-wire balloon) and with 1-min, 1-week, and 1-month reperfusion (thioflavin-S administered from the intracoronary catheter after balloon deflation).**Results:** In comparison with intra-aortic and intraventricular administration, intracoronary infusion of thioflavin-S permitted a much clearer assessment of the left anterior descending coronary artery perfused area and of microvascular obstruction. Ischemia-reperfusion injury exerted a decisive role on the occurrence and dynamics of microvascular obstruction. The no-reperfusion group displayed completely preserved perfusion. With the same duration of coronary occlusion, microvascular obstruction was already detected in the 1-min reperfusion group (14% ± 7%), peaked in the 1-week reperfusion group (21% ± 7%), and significantly decreased in the 1-month reperfusion group (4% ± 3%; $P < .001$).**Conclusions:** We present proof-of-concept evidence on the crucial role of ischemia-reperfusion injury on the occurrence and dynamics of microvascular obstruction. The described porcine model using intracoronary injection of thioflavin-S permits accurate characterization of microvascular obstruction after myocardial infarction.

© 2015 Sociedad Española de Cardiología. Published by Elsevier España, S.L.U. All rights reserved.

Infusión intracoronaria de tioflavina-S para el estudio de la obstrucción microvascular en un modelo de infarto de miocardio

RESUMEN

Introducción y objetivos: La obstrucción microvascular produce efectos nocivos después del infarto de miocardio. Con objeto de esclarecer el papel de la lesión por isquemia-reperusión en la aparición y la dinámica de la obstrucción microvascular, se llevó a cabo un estudio metodológico preliminar para definir con exactitud este proceso en un modelo *in vivo*.**Métodos:** Se indujo un infarto de miocardio en cerdos mediante una oclusión de 90 min en la parte media de la arteria coronaria descendente anterior izquierda empleando balones de angioplastia. Se aplicó una infusión intracoronaria de tioflavina-S y se comparó con la instilación tradicional intraaórtica o intraventricular. Se cuantificó el área perfundida por la arteria coronaria descendente anterior izquierda y la obstrucción microvascular en los grupos sin reperusión (administración de tioflavina-S a través de la luz de un balón hinchado montado sobre la guía) y con reperusión de 1 min, 1 semana y 1 mes (administración de tioflavina-S mediante el catéter intracoronario después de deshinchar el balón).**Resultados:** En comparación con la administración intraaórtica e intraventricular, la infusión intracoronaria de tioflavina-S permitió una evaluación mucho más clara del área perfundida por la arteria coronaria descendente anterior izquierda y de la obstrucción microvascular. La lesión por

Palabras clave:

Infarto de miocardio

Microcirculación

Modelo porcino

SEE RELATED ARTICLE:

<http://dx.doi.org/10.1016/j.rec.2015.06.022>, Rev Esp Cardiol. 2015;68:919–20.* Corresponding author: Servicio de Cardiología, Hospital Clínico Universitario, Universitat de València, INCLIVA, Blasco Ibáñez 17, 46010 Valencia, Spain.
E-mail address: vicente.bodi@uv.es (V. Bodi).<http://dx.doi.org/10.1016/j.rec.2015.04.016>

1885-5857/© 2015 Sociedad Española de Cardiología. Published by Elsevier España, S.L.U. All rights reserved.

isquemia-reperusión tuvo un papel decisivo en la aparición y la dinámica de la obstrucción microvascular. El grupo sin reperusión presentó una perfusión completamente preservada. Con la misma duración de la oclusión coronaria, la obstrucción microvascular se detectó ya en el grupo de reperusión de 1 min ($14 \pm 7\%$), alcanzó un máximo en el grupo de reperusión de 1 semana ($21 \pm 7\%$) y se redujo significativamente en el grupo de reperusión de 1 mes ($4 \pm 3\%$; $p < 0,001$).

Conclusiones: Se presenta una prueba de concepto del papel crucial que desempeña la lesión por isquemia-reperusión en la aparición y la dinámica de la obstrucción microvascular. El modelo de cerdo descrito, que emplea inyección intracoronaria de tioflavina-S, permite una caracterización exacta de la obstrucción microvascular después del infarto de miocardio.

© 2015 Sociedad Española de Cardiología. Publicado por Elsevier España, S.L.U. Todos los derechos reservados.

Abbreviations

AMI: acute myocardial infarction
 LAD: left anterior descending coronary artery
 LV: left ventricle
 MVO: microvascular obstruction
 RV: right ventricle
 T-S: thioflavin-S

INTRODUCTION

Timely and complete restoration of infarct vessel patency is the main goal in patients with acute myocardial infarction (AMI).¹ Nevertheless, this approach does not ensure adequate reperfusion at the microvascular level, and impairment of perfusion persists in a significant number of patients.² This phenomenon is referred to as microvascular obstruction (MVO) and exerts a strong negative impact after AMI.^{3–5}

Ischemia-reperfusion injury has been extensively discussed in AMI^{6,7} and it could exert deleterious effects on microvascular integrity.^{2,3} Nevertheless, there is no definitive evidence demonstrating a direct association between reperfusion injury and the occurrence of MVO in myocardial samples obtained immediately after coronary reflow. Accurate *in vivo* animal models mimicking the dynamics of MVO in humans are urgently needed. Such models would permit a better understanding of the pathophysiology and timing of this process and, in turn, the exploration of new therapeutic opportunities under controlled conditions.

In the present study, we aimed to contribute proof-of-concept evidence on the crucial role exerted by ischemia-reperfusion injury on the occurrence of MVO and on the dynamics of this process. Up to now, contrasts used for studying perfusion in myocardial samples obtained from *in vivo* animal models have been infused in the left atrium,⁸ in the left ventricle (LV)⁹ or intravenously.¹⁰ To effectively study MVO, we performed a preliminary methodological study, which consisted of investigating the best route to administer thioflavin-S (T-S) to accurately define MVO.

METHODS

Experimental Study

Thirty-one juvenile domestic pigs weighing 25 kg to 30 kg were used. The study protocol was approved by the local animal care and use committee and conforms to the current Spanish regulations (Royal Decree 53/2013, of February 1) and European Directive 2010/63/EC.

Further details on our study protocol can be consulted elsewhere.^{11,12} In summary, pigs were pretreated with intravenous

amiodarone (300 mg) and lidocaine (30 mg) to reduce life-threatening arrhythmias. A 7 Fr sheath was introduced into the right femoral artery to monitor blood pressure and to access the left anterior descending coronary artery (LAD). A 7 Fr Amplatz Left 0.75 catheter was used to selectively engage the proximal LAD and a standard hydrophilic angioplasty wire was advanced and placed in the distal LAD. A 2.5 mm x 15 mm angioplasty balloon was inflated at 6 atm in the mid LAD distal to the first diagonal branch. Coronary artery occlusion was confirmed by contrast injection and by electrocardiographic ST-segment elevation.

Three groups of experiments with reperfusion were carried out. The balloon was deflated after 90 min of coronary occlusion and restoration of normal coronary flow was documented by angiography. In the 1-min reperfusion group ($n = 5$), 20 mL of 4% T-S solution was selectively infused into the proximal LAD through the Amplatz Left 0.75 catheter 1 min after balloon deflation, and hearts were arrested with potassium chloride and excised (Figure 1). Animals in the 1-week and 1-month reperfusion groups were allowed to recover and after 1 week ($n = 5$) or 1 month ($n = 5$) respectively, the same study protocol was followed and 20 mL of 4% T-S solution was selectively infused into the proximal LAD through the Amplatz Left 0.75 catheter. Hearts were then arrested with potassium chloride and excised.

Afterwards, to evaluate the role exerted by reperfusion injury on the occurrence of MVO, the 1-min reperfusion group was compared with a no-reperfusion group ($n = 5$), which underwent an identical 90-min period of ischemia but without reperfusion. In this group of experiments, the balloon was not deflated and 20 mL of 4% T-S solution was selectively infused into the mid LAD after the first diagonal branch through the lumen of an over-the-wire balloon (Figure 1). Immediately after T-S administration, hearts were arrested using potassium chloride and then excised.

The control group was made up of 5 experiments. In this group we used the same study protocol described above, but the angioplasty balloon was not inflated and thus ischemia and infarction were not provoked. We selectively infused 20 mL of 4% T-S solution into the proximal LAD through the Amplatz Left 0.75 catheter. Hearts were then arrested with potassium chloride and excised.

A preliminary series of experiments was carried out to compare the transcatheter intraventricular and intra-aortic instillation with the methodology used in the present study (intracoronary infusion of T-S). The protocol described above was used to induce AMI in 6 pigs. Afterward, the angioplasty balloon was withdrawn and the pigs were allowed to recover. One week after infarction, the Amplatz Left 0.75 catheter was placed in the LV ($n = 3$) or in the aorta ($n = 3$), where 20 mL of 4% T-S solution was infused. Hearts were then arrested with potassium chloride and excised. The precision of intra-aortic and intraventricular vs intracoronary infusion of T-S for assessing the LAD-perfused area and MVO was compared (Figure 1).

Furthermore, to assess the best method of T-S administration for discriminating the MVO area and the LAD-perfused area, the ratio of signal intensity between the MVO area and the LAD-perfused area negative for MVO was quantified in samples obtained from intraventricular, intra-aortic and intracoronary infusion using the software package MATLAB 6.5 (The Mathworks, Ink.; Nattick, Massachusetts, United States). This parameter was defined as the ratio between the signal obtained in LAD-perfused areas negative for MVO and the signal obtained in MVO areas. Higher values indicated better discrimination between these regions and, therefore, allowed better differentiation and quantification of MVO area.

Macroscopic Study of Myocardial Samples

Immediately after excision, the whole heart was viewed under ultraviolet light and photographed. Afterward, hearts were sectioned into 5-mm thick short-axis slices. To assess myocardial perfusion in the LV, each slice was viewed under ultraviolet light and photographed (Figure 1). The LAD-perfused area was defined as the percentage of the myocardial volume showing T-S staining.

Dark blue areas were the zones not perfused by LAD whereas light blue areas were the LAD-perfused zones. Microvascular obstruction was interpreted as a lack of T-S staining in the core of the LAD-perfused area (Figure 2), and is expressed as the percentage of the LAD-perfused area.

Thereafter, slices were incubated in 2,3,5-triphenyltetrazolium chloride 2% solution for 20 min at 37 °C. Finally, they were viewed under room light and photographed. Infarcted tissue was defined as the myocardial area that did not stain with 2,3,5-triphenyltetrazolium chloride and is expressed as the percentage of the LAD-perfused area.

Myocardial wall thickness of the MVO, infarct, adjacent and remote areas was quantified in ultraviolet light images. The infarct area was defined as the area that did not stain with 2,3,5-triphenyltetrazolium chloride negative for MVO, the adjacent area was defined as the noninfarcted LAD-perfused area (with T-S and 2,3,5-triphenyltetrazolium chloride staining) and the remote area as the non-LAD-perfused myocardium (without T-S staining).

A separate subanalysis of the LAD-perfused area, MVO, infarcted tissue, and wall thickness of the right ventricle (RV) was performed using the same methodology as that for these parameters in the LV.

Images were digitalized and manual quantification of all short-axis slices was carried out offline in a dedicated laboratory (Cardiac Imaging Unit, INCLIVA, Valencia, Spain) by an experienced

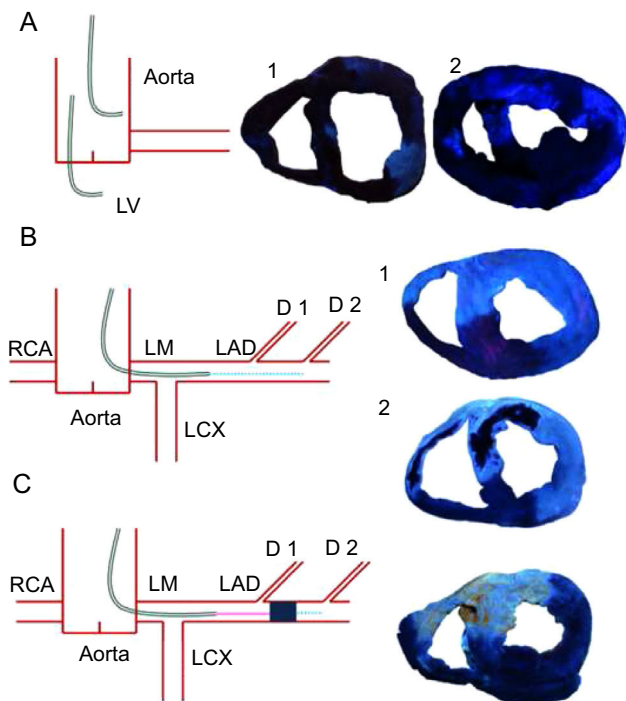


Figure 1. Methodology used for thioflavin-S infusion. Left, diagrams summarize the different methods used for thioflavin-S infusion. Right, pictures obtained under blue ultraviolet light. A: infusion in aorta (1) or in the left ventricle (2) resulted in a poor definition of the left anterior descending coronary artery-perfused area and microvascular obstruction. B: infusion into the catheter engaged in the proximal left anterior descending coronary artery resulted in a perfect definition of the left anterior descending coronary artery-perfused area and microvascular obstruction. This method was used in the control group (1) and in the 1-min, 1-week (2), and 1-month reperfusion groups. Light blue points represent the site of thioflavin-S infusion. C: infusion into the mid left anterior descending coronary artery through the lumen of an over-the-wire angioplasty balloon that was maintained inflated throughout the entire experiment resulted in a perfect definition of left anterior descending coronary artery-perfused area. This method was used in the no reperfusion group. D, diagonal; LAD, left anterior descending coronary artery; LCX, left circumflex artery; LM, left main stem; LV, left ventricle; RCA, right coronary artery.

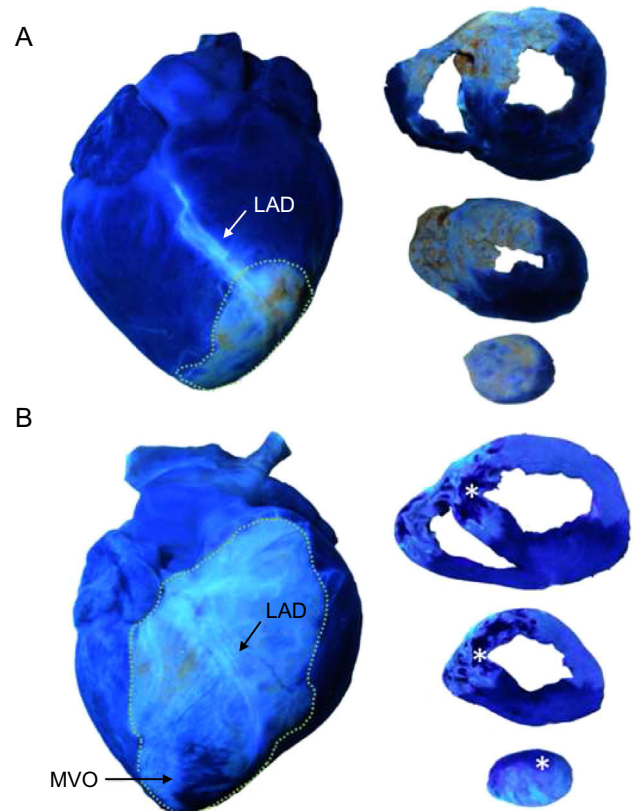


Figure 2. Effect of ischemia-reperfusion injury on the occurrence of microvascular obstruction. The images illustrate that under the same conditions and duration of coronary occlusion, perfusion was preserved in the no-reperfusion group whereas microvascular obstruction was detected as early as 1 min after reperfusion. Asterisks indicate the microvascular obstruction area. Points delimit left anterior descending coronary artery-perfused area. A: example of an entire heart and slices of the no reperfusion group. B: example of an entire heart and slices of the 1-min reperfusion group. LAD, left anterior descending coronary artery; MVO, microvascular obstruction.

observer unaware of the protocol applied in each experiment. The software package MATLAB 6.5 was used. A ruler was photographed beside myocardial slices in all images and was used as a reference for measurements. This, along with the predefined slice thickness (5 mm), permitted the calculation of LV and RV myocardial volumes.

Statistical Analysis

Continuous data are expressed as the mean \pm standard deviation and were compared by the unpaired Student's *t* test. Percentages were compared by the chi-square statistic; the Fisher exact test was used when appropriate. Statistical significance was considered for two-tailed $P < .05$. SPSS 22.0 (SPSS Inc.; Chicago, Illinois, United States) was used throughout.

RESULTS

Three experiments were not completed: 2 due to refractory ventricular fibrillation and 1 due to technical problems in the radiology equipment. Electrical ventricular defibrillation was needed in 7 pigs during LAD occlusion and in 8 pigs during reperfusion. No significant complications were recorded over the reperfusion period.

Methodology Used for Thioflavin-S Infusion

Intracoronary infusion of T-S, either from the catheter engaged in the proximal LAD (in the reperfusion groups) or from the lumen of the over-the wire balloon placed at the mid LAD (in the no-reperfusion group) resulted in much clearer definition of the LAD-perfused area and MVO than intraventricular or intra-aortic injection (Figure 1). According to these observations, the ratio of signal intensity (comparing the intensities of MVO area and LAD-perfused area negative for MVO) showed higher values in samples obtained after intracoronary infusion of T-S (5 ± 1.9) than in samples obtained after intra-aortic (1 ± 0.5) or intraventricular (1 ± 0.3) infusion of T-S.

Dynamics of Microvascular Obstruction

Microvascular obstruction was detected in the LV myocardial samples from all reperused experiments. Microvascular obstruction was detected as early as 1 min after reperfusion, peaked at 1 week, and decreased at 1 month. The extent of MVO detected in the 1-month reperfusion group was significantly lower than that observed in the 1-week reperfusion group (Figure 3 and Table). Similar results regarding the dynamics of MVO occurred in the RV (Figure 1 and Table 1 of the supplementary material).

Proof-of-concept Evidence of the Effect of Ischemia-reperfusion Injury on Microvascular Obstruction

In experiments performed under the same controlled conditions and duration of coronary occlusion, MVO only occurred in myocardial samples obtained from reperused swine. Figure 2 depicts the crucial role of reperfusion injury on the occurrence of MVO. Whereas myocardial perfusion was completely preserved in myocardial samples obtained from all experiments in the no-reperfusion group, MVO was detected in all experiments in the 1-min reperfusion group.

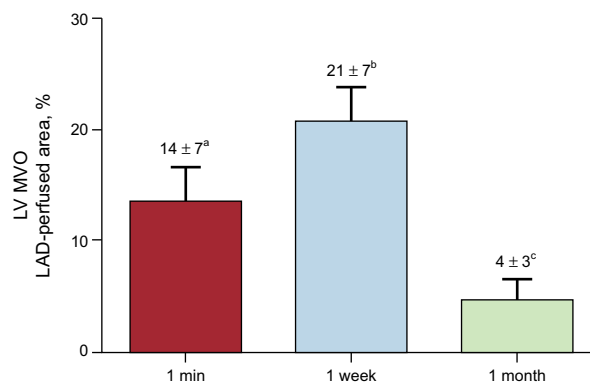


Figure 3. Dynamics of microvascular obstruction in the left ventricle. The extent of microvascular obstruction is represented as a percentage of the left anterior descending coronary artery-perfused area. Microvascular obstruction was already detected in 1-min group, peaked in the 1-week group, and partly resolved in the 1-month reperfusion group. LAD, left anterior descending coronary artery; LV, left ventricle; MVO, microvascular obstruction.

^a $P < .01$ vs control group.

^b $P < .001$ vs control group.

^c $P < .001$ vs 1-week reperfusion group.

Structural Consequences of Microvascular Obstruction

Infarct tissue (as derived from 2,3,5-triphenyltetrazolium chloride staining) was detected in all cases in the 1-week and 1-month reperfusion groups (Table).

Left ventricle myocardial wall thinned in the MVO area in the 1-month reperfusion group compared with the infarct, adjacent and remote areas at the same time point (Table) and compared with the MVO area in the 1-week reperfusion group (Figure 4).

A similar tendency regarding the extent of the infarcted area and the association of MVO with progressive wall thinning occurred in the RV (Figure 2 and Table 1 of the supplementary material).

DISCUSSION

The main contribution of the present study is the description of the crucial effect exerted by ischemia-reperfusion injury on the occurrence and dynamics of MVO. To perform a precise

Table

Left Anterior Descending Coronary Artery-perfused Area, Microvascular Obstruction, Infarct Area, and Myocardial Wall Thickness in the Left Ventricle in the 3 Series of Experiments

| LV | 1 min | 1 week | 1 month |
|--------------------------------------|---------------------|----------------------|-----------------------|
| LAD-perfused area, % of LV | 65 ± 6 | 76 ± 8 | 66 ± 13 |
| MVO, % of LAD-perfused area | 14 ± 7 ^a | 21 ± 7 ^b | 4 ± 3 ^c |
| Infarct area, % of LAD-perfused area | 0 ± 0 | 34 ± 13 ^b | 26 ± 11 ^b |
| Myocardial wall thickness, mm | | | |
| MVO area | 10 ± 2.3 | 9 ± 2.7 | 7 ± 2.7 |
| Infarct area | | 10 ± 2.8 | 10 ± 2.7 ^d |
| Adjacent area | 11 ± 2.4 | 11 ± 2.7 | 11 ± 3.8 ^d |
| Remote area | 12 ± 2.6 | 11 ± 3.0 | 13 ± 4.2 ^d |

LAD, left anterior descending coronary artery; LV, left ventricle; MVO, microvascular obstruction.

^a $P < .01$ vs controls.

^b $P < .001$ vs controls.

^c $P < .001$ vs 1 week.

^d $P < .001$ vs microvascular obstruction area

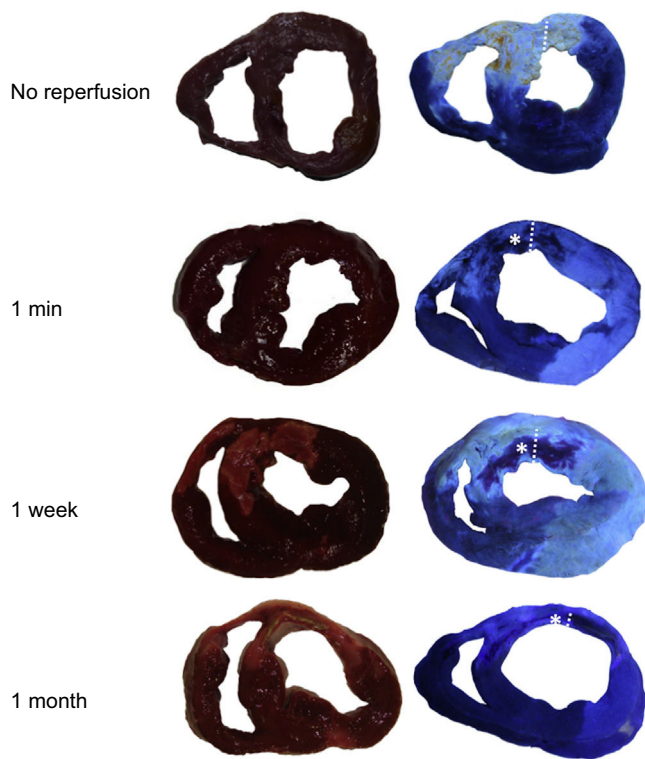


Figure 4. Consequences of microvascular obstruction on the left ventricular myocardial wall thickness. Slices of no reperfusion and 1-min, 1-week, and 1-month reperfusion groups stained with 2,3,5-triphenyltetrazolium chloride (left panels) and thioflavin-S (right panels). Asterisks indicate the microvascular obstruction area in the reperfused groups. Points delimit left ventricle wall thickness in the microvascular obstruction area. A significant thinning of the left ventricle wall in the microvascular obstruction area took place 1 month after reperfusion.

characterization of MVO in myocardial samples, an experimental model of anterior AMI based on intracoronary infusion of T-S was defined.

Methodology Used for Thioflavin-S Infusion

Animal models recreate human disease and constitute an essential tool for a better understanding of the underlying mechanisms. Currently, due to the similar size and cardiac physiology of swine and human heart, pigs represent the preferred specie for experimental studies not only in ischemia-reperfusion injury, but also in other cardiovascular diseases such as atherosclerosis.^{13–15} Although swine models of acute AMI have been well defined and widely used, methodology specifically focused on the characterization of MVO after AMI has not been developed.

Thioflavin-S, a dye that stains perfused endothelium, was used to quantitatively measure MVO. Intra-atrial,⁸ intraventricular⁹ and intravenous¹⁰ infusion of a variety of contrasts for different purposes such as for analysis of perfusion, area at risk, or MVO has been previously reported (Table 2 of the supplementary material). However, as far as we know, a specific methodological description of the contribution of intracoronary dye administration has not been explored. From our previous experience using intracoronary contrast echocardiography in humans, we learnt that this route offered the highest definition of myocardial perfusion.¹⁶ This background inspired us to undertake the present study. In the described swine model of anterior AMI, intracoronary infusion of

T-S permitted excellent delineation of the LAD-perfused area and MVO in myocardial samples obtained immediately after sacrifice. Conversely, T-S infusion from intra-aortic and intraventricular routes resulted in a much poorer definition of myocardial perfusion. This observation was evident both by visual analysis of images and after quantification of the intensity ratio.

The intracoronary infusion of T-S was carried out either from the catheter engaged in the proximal LAD (once the angioplasty balloon had been deflated and removed) or through the lumen of an over-the wire balloon placed at the mid LAD (which was maintained inflated during the entire experiment). The first strategy was helpful to evaluate the dynamics of MVO at different time points of the ischemia-reperfusion process. The second model allowed us to explore the state of microvasculature after a long period of ischemia but immediately before the potentially deleterious effect exerted by reperfusion injury.

Thus, this novel strategy using intracoronary infusion of T-S appears to be a simple and reliable approach that permits accurate characterization of myocardial perfusion and MVO in myocardial samples obtained from an *in vivo* swine model of anterior AMI. This methodology may be helpful in the future to achieve further progress in understanding of the mechanisms underlying MVO and to explore the effects of new therapeutic opportunities addressed to prevent or reverse this process.

Dynamics of Microvascular Obstruction

Over the early hours and days after reperfusion, changes occur in the state of microvasculature under the influence of multiple pathogenic components.^{2,3} We and others have demonstrated that, using imaging techniques in patients, there is a tendency toward spontaneous resolution of MVO during the weeks and months following reperfused AMI.^{2,3,17,18}

The *in vivo* model presented here represents an ideal platform to characterize the dynamics of this process. For this purpose, we undertook experiments at different post-reperfusion times: 1 min, 1 week, and 1 month after reperfusion. Important changes in the extent of MVO were observed: it was already detected immediately after reperfusion, reached its greatest extent at 1 week, and almost completely resolved at 1 month. Recent studies in a swine model have demonstrated other aspects of myocardial structural damage. They have observed that edema follows a bimodal pattern during the first week after AMI.¹⁹ Our results reveal that MVO also has a dynamic behavior characterized by an increment during the first week after AMI and a decrease at 1 month after AMI. These findings have potential implications in terms of diagnosis and therapy.

Firstly, there is no agreement regarding the most appropriate moment for evaluating MVO in patients with AMI. On the basis of our results, it could be suggested that analysis by imaging techniques before discharge (around 1 week after AMI) can provide an approximate estimation of the entire microvascular injury. Secondly, the dynamic behavior of MVO offers a therapeutic target beyond myocardial salvage. To date, apart from timely reperfusion within the very few first hours following coronary occlusion, approaches tested for reducing infarct size have been unsuccessful.²⁰ Therefore, acting upon the damaged myocardium remains difficult. However, although the deleterious effects of a larger extent of MVO on patient outcome and LV remodeling have been well documented, so far the efficacy of therapies addressed to reduce MVO have failed and future endeavors must prove their value in addition to timely coronary reperfusion in rigorous randomized trials.^{21–23}

As expected, infarcted tissue was not detected in controls, or in the no-reperfusion and 1-min reperfusion groups. The maximum

extent of infarct area occurred 1 week after reperfusion. At 1 month, as a consequence of the shrinking process, infarct size diminished.

We have previously demonstrated that RV structural damage is not exclusive of inferior AMI. In anterior AMI, both infarct tissue and MVO can be detected in the anterior territory of the RV.¹¹ The present study confirms the structural consequences of anterior AMI on the RV. The course of MVO in the RV paralleled that observed in the LV. This observation provides relevant information about the nature of MVO and reperfusion damage, but the clinical implications of these findings are uncertain.

Proof-of-concept Evidence of the Effect of Reperfusion on Microvascular Obstruction

The role exerted by ischemia-reperfusion injury in terms of myocardial damage has been largely debated. The pathogenesis of MVO is multifactorial and includes the combination of a variety of components.^{2,3} The significance of ischemia-reperfusion injury, if any, on this puzzle has not been totally understood. Controversy on the significance of ischemia-reperfusion injury has existed for years,^{6,7} but this mechanism has been suggested to play a role on MVO appearance.^{2,3}

In this study, beyond theoretical statements, we aimed to contribute proof-of-concept data on the decisive influence of ischemia-reperfusion injury on MVO. To specifically address this issue, we designed 2 series of experiments in which anterior AMI was provoked using identical conditions. The only differing factor was reperfusion. In the first series, at the end of the 90-minute LAD occlusion, T-S was injected through the lumen of the balloon, which was maintained inflated; thus, reperfusion was not allowed. In the second group, at the end of the 90-min LAD occlusion, the balloon was deflated and removed and T-S was infused through the catheter engaged in the proximal LAD after a 1-min reperfusion period. Striking differences in terms of MVO were observed when myocardial samples of both series were compared. Whereas myocardial perfusion was completely preserved in the no-reperfusion group, MVO was observed in all cases that underwent as short as 1-min reperfusion.

In our view, the data presented contribute convincing evidence on the decisive role of ischemia-reperfusion injury on MVO. Currently, promising treatments against reperfusion injury exist but are still experimental.²⁴ Furthermore, a number of medical or invasive approaches aimed at reducing MVO in reperfused AMI have been controversial or unsuccessful.^{21,22} Therefore, beyond the well-established effectiveness of timely primary percutaneous intervention, great efforts are still needed to better understand and manage the crucial peri-reperfusion minutes.

Study Limitations

First, the main limitation of the present study is the absence of a comparator technique to assess MVO in vivo, such as cardiac magnetic resonance imaging; a second technique confirming the results would have strengthened the conclusions obtained. Second, functional techniques evaluating the influence of MVO on cardiac function (such as strain by echocardiography or by intramyocardial crystals) could have provided some insight into the functional consequences of MVO, but these techniques are not available in our laboratory.

As always in basic research, translation to clinical practice needs caution. Data obtained in the present work could inspire studies in humans both to replicate our results using imaging techniques and to encourage the design of trials aimed at obtaining

novel therapeutic tools to minimize the deleterious effect of reperfusion injury on microvascular perfusion.

CONCLUSIONS

The immediate onset of MVO following balloon deflation demonstrates the decisive role of ischemia-reperfusion injury on the occurrence of this process and demands awareness on the management of this short but critical time period in the revascularization of AMI patients. The in vivo experimental model presented could be helpful as a platform for further translational studies focused on a better understanding of MVO and on exploring alternative therapeutic opportunities under highly controlled conditions.

FUNDING

The present study was supported by the *Instituto de Salud Carlos III*, the European Regional Development Fund (PI1400271 grant), and the *Generalitat Valenciana* (PROMETEO/2013/007 grant) and was awarded by the *Reial Acadèmia de Medicina de la Comunitat Valenciana*.

CONFLICTS OF INTEREST

None declared.

SUPPLEMENTARY MATERIAL



Supplementary material associated with this article can be found in the online version available at doi:10.1016/j.rec.2015.04.016.

REFERENCES

1. Steg G, James SK, Atar D, Badano LP, Blömostrom-Lundqvist C, Borger MA, et al. ESC Guidelines for the management of acute myocardial infarction in patients presenting with ST-segment elevation. *Eur Heart J*. 2012;33:2569–619.
2. Jaffe R, Dick A, Strauss BH. Prevention and treatment of microvascular obstruction-related myocardial injury and coronary no-reflow following percutaneous coronary intervention: a systematic approach. *JACC Cardiovasc Interv*. 2010;3:695–704.
3. Niccoli G, Burzotta F, Galiuto L, Crea F. Myocardial no-reflow in humans. *J Am Coll Cardiol*. 2009;54:281–92.
4. Bolognese L, Carrabba N, Parodi G, Santoro GM, Buonamici P, Cerisano G, et al. Impact of microvascular dysfunction on left ventricular remodeling and long-term clinical outcome after primary coronary angioplasty for acute myocardial infarction. *Circulation*. 2004;109:1121–6.
5. Brosh D, Assali AR, Mager A, Porter A, Hasdai D, Teplitsky I, et al. Effect of no-reflow during primary percutaneous coronary intervention for acute myocardial infarction on six-month mortality. *Am J Cardiol*. 2007;99:442–5.
6. Ovize M, Baxter GF, Di Lisa F, Ferdinandy P, Garcia-Dorado D, Hausenloy DJ, et al. Postconditioning and protection from reperfusion injury: where do we stand? Position Paper from the Working Group of Cellular Biology of the Heart of the European Society of Cardiology. *Cardiovasc Res*. 2010;87:406–23.
7. Hausenloy DJ, Yellon DM. Myocardial ischemia-reperfusion injury: a neglected therapeutic target. *J Clin Invest*. 2013;123:92–100.
8. Kumar A, Green JD, Sykes JM, Ephrat P, Carson JJ, Mitchell AJ, et al. Detection and quantification of myocardial reperfusion hemorrhage using T2*-weighted CMR. *JACC Cardiovasc Imaging*. 2011;4:1274–83.
9. Wu KC, Kim RJ, Bluemke DA, Rochitte CE, Zerhouni EA, Becker LC, et al. Quantification and time course of microvascular obstruction by contrast-enhanced echocardiography and magnetic resonance imaging following acute myocardial infarction and reperfusion. *J Am Coll Cardiol*. 1998;32:1756–64.
10. Kloner RA, Ganote CE, Jennings RB. The 'no-reflow' phenomenon after temporary coronary occlusion in the dog. *J Clin Invest*. 1974;54:1496–508.
11. Bodi V, Sanchis J, Mainar L, Chorro FJ, Nunez J, Monmeneu JV, et al. Right ventricular involvement in anterior myocardial infarction: a translational approach. *Cardiovasc Res*. 2010;87:601–8.
12. Bodi V, Sanchis J, Morales JM, Marrachelli VG, Nunez J, Forteza MJ, et al. Metabolomic profile of human myocardial ischemia by nuclear magnetic

- resonance spectroscopy of peripheral blood serum. A translational study based on transient coronary occlusion models. *J Am Coll Cardiol*. 2012;59:1629–41.
13. Elmadhun NY, Sabe AA, Robich MP, Chu LM, Lassaletta AD, Sellke FW. The pig as a valuable model for testing the effect of resveratrol to prevent cardiovascular disease. *Ann N Y Acad Sci*. 2013;1290:130–5.
 14. Cuellas-Ramón C, Pérez de Prado A, Pérez-Martínez C, Diego-Nieto A, Gonzalo-Orden JM, Fernández-Vázquez F. Investigación traslacional en isquemia, infarto de miocardio y reperfusión. *Rev Esp Cardiol Supl*. 2013;13(E):57–63.
 15. Santos-Gallego CG, Badimon JJ, Ibáñez B. Modelos experimentales de aterosclerosis. *Rev Esp Cardiol Supl*. 2013;13(E):3–12.
 16. Bodí V, Sanchis J, Losada A, López-Lereu MP, García D, Pellicer M, et al. Usefulness of quantitative intravenous myocardial contrast echocardiography to analyze microvasculature perfusion in patients with a recent myocardial infarction and an open infarct-related artery: comparison with intracoronary myocardial contrast echocardiography. *Eur J Echocardiography*. 2005;6:164–74.
 17. Galiuto L, Lombardo A, Maseri A, Santoro L, Porto I, Cianflone D, et al. Temporal evolution and functional outcome of no reflow: sustained and spontaneously reversible patterns following successful coronary recanalisation. *Heart*. 2003;89:731–7.
 18. Bodí V, Sanchis J, Lopez-Lereu MP, Nunez J, Mainar L, Pellicer M, et al. Evolution of 5 cardiovascular magnetic resonance-derived viability indexes after reperfused myocardial infarction. *Am Heart J*. 2007;153:649–55.
 19. Fernández-Jiménez R, Sánchez-González J, Agüero J, García-Prieto J, López-Martín GJ, García-Ruiz JM, et al. Myocardial edema after ischemia/reperfusion is not stable and follows a bimodal pattern: imaging and histological tissue characterization. *J Am Coll Cardiol*. 2015;65:315–23.
 20. Buja LM. Myocardial ischemia and reperfusion injury. *Cardiovasc Pathol*. 2005;14:170–5.
 21. Bodí V, Ruiz-Nodar JM, Feliu E, Minana G, Nunez J, Husser O, et al. Effect of ischemic postconditioning on microvascular obstruction in reperfused myocardial infarction. Results of a randomized study in patients and of an experimental model in swine. *Int J Cardiol*. 2014;175:138–46.
 22. Kalltoft A, Bøttcher M, Nielsen SS, Hansen HH, Terkelsen C, Maeng M, et al. Routine thrombectomy in percutaneous coronary intervention for acute ST-segment-elevation myocardial infarction: a randomized, controlled trial. *Circulation*. 2006;114:40–7.
 23. Niccoli G, Kharbada RK, Crea F, Banning AP. No-reflow: again prevention is better than treatment. *Eur Heart J*. 2010;31:2449–55.
 24. García-Dorado D, Rodríguez-Sinovas A, Ruiz-Meana M, Inerte J. Protección contra el daño miocárdico por isquemia-reperfusión en la práctica clínica. *Rev Esp Cardiol*. 2014;67:394–404.