

Original article

Immunohistological Analysis of Intracoronary Thrombus Aspirate in STEMI Patients: Clinical Implications of Pathological Findings

Ana Blasco,^{a,*} Carmen Bellas,^b Leyre Goicolea,^a Ana Muñoz,^a Víctor Abaira,^c Ana Royuela,^d Susana Mingo,^a Juan Francisco Oteo,^a Arturo García-Touchard,^a and Francisco Javier Goicolea^a^a Servicio de Cardiología, Hospital Universitario Puerta de Hierro, Majadahonda, Madrid, Spain^b Departamento de Anatomía Patológica, Hospital Universitario Puerta de Hierro, Majadahonda, Madrid, Spain^c Departamento de Estadística, Hospital Universitario Ramón y Cajal, Madrid, Spain^d Departamento de Estadística, Hospital Universitario Puerta de Hierro, Majadahonda, Madrid, Spain

Article history:

Received 6 March 2016

Accepted 4 July 2016

Available online 10 October 2016

Keywords:

Myocardial infarction
Coronary angioplasty
Thrombus
Pathology
Immunohistochemistry

ABSTRACT

Introduction and objectives: Thrombus aspiration allows analysis of intracoronary material in patients with ST-segment elevation myocardial infarction. Our objective was to characterize this material by immunohistology and to study its possible association with patient progress.**Methods:** This study analyzed a prospective cohort of 142 patients undergoing primary angioplasty with positive coronary aspiration. Histological examination of aspirated samples included immunohistochemistry stains for the detection of plaque fragments. The statistical analysis comprised histological variables (thrombus age, degree of inflammation, presence of plaque), the patients' clinical and angiographic features, estimation of survival curves, and logistic regression analysis.**Results:** Among the histological markers, only the presence of plaque (63% of samples) was associated with postinfarction clinical events. Factors associated with 5-year event-free survival were the presence of plaque in the aspirate (82.2% vs 66.0%; $P = .033$), smoking (82.5% smokers vs 66.7% nonsmokers; $P = .036$), culprit coronary artery (83.3% circumflex or right coronary artery vs 68.5% anterior descending artery; $P = .042$), final angiographic flow (80.8% II-III vs 30.0% 0-I; $P < .001$) and left ventricular ejection fraction $\geq 35\%$ at discharge (83.7% vs 26.7%; $P < .001$). On multivariable Cox regression analysis with these variables, independent predictors of event-free survival were the presence of plaque (hazard ratio, 0.37; 95%CI, 0.18–0.77; $P = .008$), and left ventricular ejection fraction (hazard ratio, 0.92; 95%CI, 0.88–0.95; $P < .001$).**Conclusions:** The presence of plaque in the coronary aspirate of patients with ST elevation myocardial infarction may be an independent prognostic marker. CD68 immunohistochemical stain is a good method for plaque detection.

© 2016 Sociedad Española de Cardiología. Published by Elsevier España, S.L.U. All rights reserved.

Análisis inmunohistológico del aspirado intracoronario en pacientes con IAMCEST: implicaciones clínicas de los hallazgos anatomopatológicos

RESUMEN

Introducción y objetivos: La tromboaspiración permite analizar el material intracoronario en pacientes con infarto agudo de miocardio con elevación del segmento ST. Nuestro objetivo fue caracterizar este material mediante inmunohistología y estudiar su posible relación con el pronóstico.**Métodos:** Cohorte prospectiva de 142 pacientes sometidos a angioplastia primaria con tromboaspiración positiva. El examen histológico del material aspirado incluyó técnicas de inmunohistoquímica para detectar fragmentos de placa. Se estudiaron variables histológicas (antigüedad del trombo, grado de inflamación, presencia de placa), clínicas y angiográficas de los pacientes. Se realizaron análisis de supervivencia y regresión logística.**Resultados:** De los marcadores histológicos, solo la presencia de placa (el 63% de las muestras) se relacionó con los eventos clínicos. Los factores asociados a la supervivencia libre de eventos a los 5 años fueron: presencia de placa (el 82,2 frente al 66,0%; $p = 0,033$), tabaquismo (el 82,5 frente al 66,7%; $p = 0,036$), arteria responsable del infarto (el 83,3% en infartos de circunfleja o coronaria derecha frente al 68,5% de descendente anterior; $p = 0,042$); flujo angiográfico final (el 80,8% de II–III frente al 30,0% de 0–I; $p < 0,001$) y fracción de eyección $\geq 35\%$ (el 83,7 frente al 26,7%; $p < 0,001$). En el análisis multivariable de

Palabras clave:

Infarto de miocardio
Angioplastia coronaria
Trombo
Anatomía patológica
Inmunohistoquímica* Corresponding author: Hospital Universitario Puerta de Hierro Majadahonda, calle Manuel de Falla 1, 28222 Madrid, Spain.
E-mail address: ablasc@gmail.com (A. Blasco).

regresión (Cox) con dichas variables, se identificaron la presencia de placa (HR = 0,37; IC95%, 0,18–0,77; $p = 0,008$) y la fracción de eyección (HR = 0,92; IC95%, 0,88–0,95; $p < 0,001$) como predictores independientes de supervivencia libre de eventos.

Conclusiones: La presencia de placa de ateroma en el aspirado coronario de los pacientes con infarto de miocardio transmural puede ser un marcador pronóstico independiente, y el análisis inmunohistoquímico con CD68 es un buen método para detectarlo.

© 2016 Sociedad Española de Cardiología. Publicado por Elsevier España, S.L.U. Todos los derechos reservados.

Abbreviations

LVEF: left ventricular ejection fraction
 MACE: major adverse cardiovascular events
 PCI: percutaneous coronary intervention
 STEMI: ST-segment elevation myocardial infarction
 TIMI: Thrombolysis in Myocardial Infarction

INTRODUCTION

The genesis of arterial thromboses involves 3 factors (Virchow's triad): arterial wall characteristics, blood flow properties, and certain circulating factors in the blood. In autopsy studies of individuals with sudden cardiac death, thrombosis associated with plaque rupture appears to be the predominant mechanism underlying the occurrence of acute coronary syndrome. This pathogenic process can begin days or even weeks before a fatal ST-segment elevation myocardial infarction (STEMI),^{1,2} and intra-plaque hemorrhage, caused by cracks or fissures in the surface of the arterial lumen, can accelerate the transition toward rupture.³

Many ruptured atheroma plaques are initially covered by wall thrombi and have no clinical symptoms.⁴ Such wall thrombi can become organized over time and incorporated into atherosclerotic lesions, restoring the integrity of the vessel wall. This type of "scar" lesion is often seen in coronary arteries in autopsies.^{4–6} In contrast, in other patients, atherosclerotic plaque rupture triggers a process of repeated or continuous thrombosis that culminates in acute coronary syndrome.^{7,8}

The use of thrombus aspiration during primary percutaneous coronary intervention (PCI) offers a unique opportunity to study the composition of thrombi and their dynamic in vivo formation.⁹ Although the samples obtained using thrombus aspiration fail to completely reflect all components of thrombi or their actual distribution, they allow thrombi to be studied without the effect of postmortem histological changes.

Various researchers have studied the histological characteristics of aspirated samples in patients with STEMI, analyzing the composition of the samples and the age of the coronary thrombus. In a large proportion of patients, the thrombus age is older than 24 hours, confirming that sudden coronary occlusion is often preceded by a variable period of plaque instability and thrombus formation.^{10,11}

Only 1 study¹² has analyzed the relationship between coronary aspirate histology and the prognosis of STEMI patients, finding that thrombus age was an independent predictor of long-term mortality.

The aim of the present study was to immunohistologically characterize the coronary material aspirated during primary PCI and analyze its ability to predict clinical events in patients with STEMI.

METHODS

Study Participants

The study cohort comprised 142 patients with STEMI (Figure 1). Aspirate material had been extracted from the patients during primary PCI using a coronary thrombus aspirator. Samples were collected between January 2005 and August 2007 and throughout 2009 (in 2008, the hospital moved to its current location, precluding the analysis of aspirated thrombi). Samples were collected consecutively on weekdays from 0800 to 1500 hours for logistical reasons (absence of personnel for sample shipment and collection). Thus, although aspirate material was collected from 261 primary PCIs during the study period, this study included 142 samples.

Clinical, angiographic, and procedure-related variables were prospectively collected in a database specifically designed for this purpose. The information recorded included epidemiological characteristics and patients' medical records, presence of prodromal angina, Killip class, ST resolution, analytical parameters, left ventricular ejection fraction (LVEF) at discharge, procedure times (eg, symptom onset-to-balloon, door-to-balloon), angioplasty information, and patient outcomes.

All angiograms were reviewed, with various details recorded, such as the presence of collateral circulation (0–3, according to the Rentrop classification¹³), TIMI (Thrombolysis in Myocardial Infarction) flow prior to PCI, and the final angiographic result.

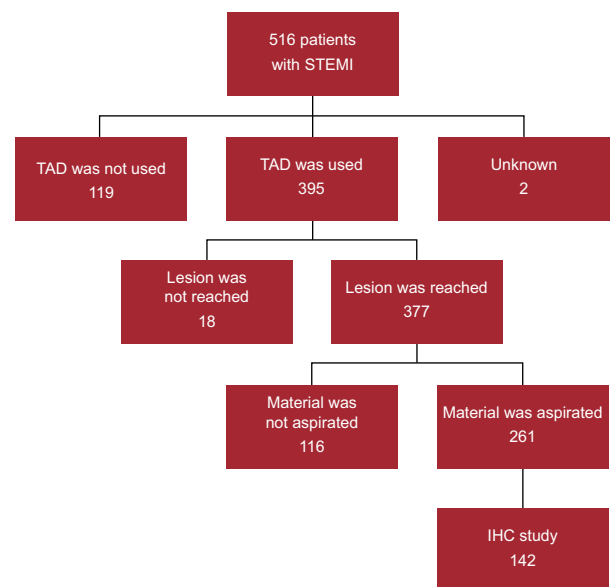


Figure 1. Flow diagram of patients with STEMI whose aspirated coronary material was obtained during primary PCI included in the study. IHC, immunohistochemistry; PCI, percutaneous coronary intervention; STEMI, ST-segment elevation myocardial infarct; TAD, thrombus aspiration device.

This result was evaluated using the final TIMI flow, the corrected TIMI Frame Count,¹⁴ and the degree of myocardial perfusion, classified from 0 to 3 according to the definition of the TIMI Group.¹⁵

Drug therapy prior to PCI included aspirin and clopidogrel in loading doses of 300 and 600 mg, respectively, and 5000 to 10 000 IU of unfractionated heparin. Glycoprotein IIb/IIIa inhibitors were used systematically, unless contraindicated, and the aspiration device was chosen by the operator for each procedure.

Processing and Analysis of Intracoronary Material

The aspirated samples were washed with saline immediately after extraction, fixed in 10% neutral buffered formalin, and sent to the department of anatomic pathology for processing. After

fixation, the material was embedded in paraffin, sectioned to obtain 4- μ m slices, and mounted on glass slides. The sections were stained with hematoxylin and eosin for light microscopy and with antibodies (Dako and Glostrup, Denmark) against macrophages (CD68), platelet-endothelial cell adhesion molecule (CD31), and actin filaments (HHF35). Perls staining to detect iron could be performed in 111 samples to identify areas of old bleeding in the interior of the plaque fragments (Figure 2).

An experienced pathologist blinded to patient information performed the histopathological analysis. According to the previously accepted histopathological definition,¹⁰ the thrombus age was classified into 2 groups: fresh thrombi (< 1 day), composed of layers of fibrin, platelets, erythrocytes, and intact granulocytes, and old thrombi (> 1 day), composed of lytic (1-5 days) and/or organized (> 5 days) areas. Lytic areas are characterized by colliquation necrosis and granulocyte

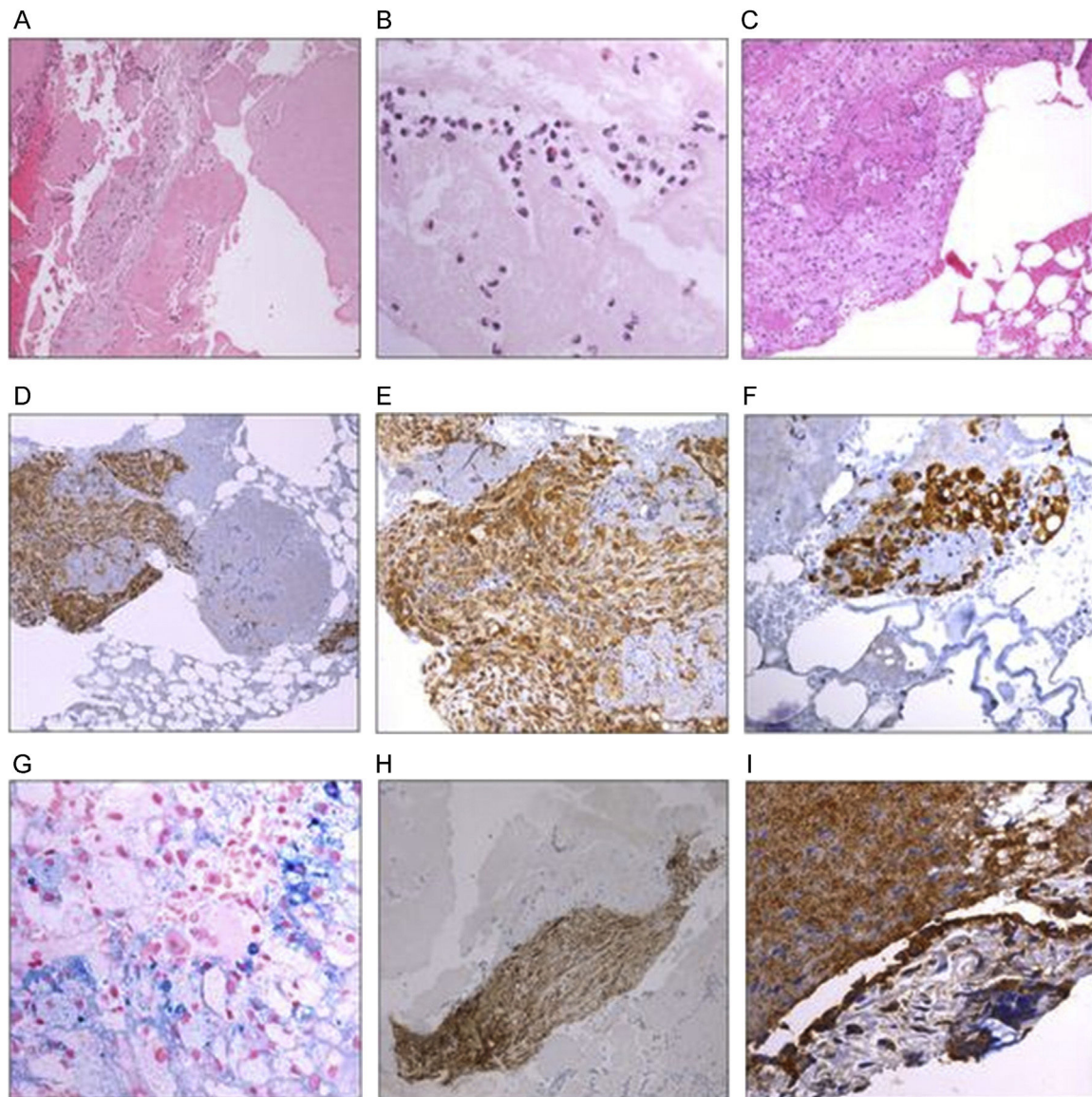


Figure 2. Photomicrographs of coronary material extracted via thrombus aspiration from patients with ST-segment elevation myocardial infarction. A: heterogeneous thrombus with areas of fresh thrombi that include intact blood cells (granulocytes, platelets, and erythrocytes) and fibrin, together with lytic areas with cellular degradation. B: detail of a fresh thrombus showing eosinophils and neutrophils with fibrin networks. C: coronary aspirate material that includes atheroma fragments composed of macrophages. D, E, and F: representative images of atheroma plaque with immunohistochemical stains: cells positive for CD68 (macrophages) permit identification of “soft plaque” fragments. G: detail of Perls staining for iron, with the siderophages permitting the identification of areas of old bleeding. H: atheroma plaque fragments identified using positive staining for HHF35 (actin) antibodies. I: cells stained with antibodies against platelet-endothelial cell adhesion molecule (CD31) indicative of an organized thrombus.

karyorrhexis, whereas organized areas are characterized by the development of new capillary vessels and smooth muscle cells, with or without connective tissue deposits. In the present analysis, we distinguished fresh and old thrombi, with old thrombi containing at least 1 lytic or organized area.

The Perls staining and immunohistochemistry were semiquantitatively analyzed and graded as follows: 0, negative staining; 1, few positive cells; and 2, many positive cells. For the statistical analysis, samples scoring 1 or 2 were grouped and those scoring 0 were considered negative.

Plaque fragments were identified by the presence of some constituent material of “soft plaque” (extracellular lipids, macrophage foam cells [CD68 positive], and/or cholesterol crystals), smooth muscle fibers (HHF35), endothelial cells (CD31), iron deposits, calcium, fibroelastic tissue, or their combinations. Staining with CD68 and CD31 was only considered positive when it marked plaque components: macrophages in the case of CD68—present in the plaque and not in the thrombus—and endothelial cells with CD31.

The local ethics committee approved the handling and analysis of the aspirated samples and all patients agreed to participate in the study. The procedures used were carried out in accordance with the guidelines of the Declaration of Helsinki concerning the ethical principles for medical research in humans.

Clinical Follow-up

Patient follow-up was performed via an outpatient clinic or telephone contact for a median of 2.4 years (1–6 years), with a loss to follow-up of 1%. Three physicians (A. Blasco, L. Goicolea, and A. Muñoz) in charge of the database prospectively recorded major adverse cardiac events (MACE): death, recurrent myocardial infarction, urgent revascularization, and definite or probable stent thrombosis (Academic Research Consortium).¹⁶

Statistical Analysis

Categorical variables are expressed as percentages and continuous variables as mean \pm standard deviation or as median [interquartile range] for times. Associations between qualitative variables were analyzed using the chi-square test and those between continuous variables using the Student *t* test and Mann-Whitney U test. Survival curves for MACE were estimated using the Kaplan-Meier method and were compared using a log-rank test.

To identify independent predictors of MACE during follow-up, multivariable Cox regression analysis with backward selection was used, eliminating all variables scoring $P < .05$. The descriptive power of the model was evaluated using Harrell's C index,¹⁷ equivalent to the area under the ROC curve in survival models; $C = .5$ is no better than chance and $C = 1$ corresponds to perfect discrimination.

All tests were 2-sided and $P < .05$ was considered statistically significant. Statistical analysis was performed with SPSS version 18.0.

RESULTS

The study included 142 patients with STEMI whose material was obtained via aspiration during primary PCI. The histological characteristics of the coronary aspirates are shown in Table 1.

In 4 of the 142 samples studied, no thrombus was identified or it was insufficient to permit categorization of its age. In the remaining 138 samples, the thrombus was fresh in 54 (39%), lytic in 76 (55%), and organized in 8 (6%). Granulocyte infiltration was

Table 1

Histological and Immunohistochemical Characteristics of Coronary Aspirates in Patients With STEMI

	n (%)
<i>Type of thrombus (n = 138)</i>	
Fresh	54 (39)
Lytic	76 (55)
Organized	8 (6)
<i>IHC techniques (n = 142)</i>	
CD68+	70 (49)
CD31+	28 (20)
HHF35+	23 (16)
<i>Perls staining + (n = 111)</i>	29 (26)
<i>Presence of plaque (n = 142)</i>	90 (63)

CD31, antibody against platelet-endothelial cell adhesion molecule; CD68, macrophage marker; HHF35, antibodies against actin filaments; IHC, immunohistochemistry; STEMI, ST-segment elevation myocardial infarction.

absent or mild in 77 of the 138 patients (56%) and moderate or intense in 61 (44%).

Atherosclerotic plaque components were identified in 90 of the 142 patients (63%). Antibody staining of macrophages (CD68) was positive in 49% of the samples; only 6 samples negative for CD68 were positive in either of the 2 immunohistochemical techniques (HHF35 in 5 samples, CD31 in 2). In 4 samples, the plaque was identified via hemosiderin deposits (Perls+).

The median weight of the aspirated samples was 0.046 g [0.02–0.1 g]. Univariable analysis showed that aspirate weight was inversely associated with the presence of plaque (median weight without plaque, 0.07 g [0.03–0.12 g]; with plaque, 0.04 g [0.02–0.10 g]; $P = .017$). Thus, the largest aspirates were less likely to contain plaque fragments.

The clinical and angiographic characteristics of the patients are summarized in Table 2. Clinical events occurring during follow-up were death from any cause in 24 patients (4.4/1000 person-months), cardiac death in 15 (2.7/1000 person-months), and reinfarction in 7 (1.3/1000 patient-months). The composite MACE outcome occurred in 32 patients (7/1000 patient-months).

Table 3 shows a comparison of the clinical and angiographic characteristics of patients and the histology of the coronary aspirate according to the occurrence of adverse clinical events 5 years after STEMI. The presence of plaque in the aspirate was the only histological variable significantly associated with the occurrence of MACE, and no association was found with any other variable prior to aspiration that could be indicative of a confounding effect (Table 2). Thrombus age was not associated with patient outcomes in this series.

The survival curves for MACE were significantly different according to smoking habit, culprit coronary artery, TIMI flow after primary PCI, LVEF at discharge, and presence of plaque in the coronary aspirate (Figure 3 and Figure 4). The 5-year MACE-free survival rates were 82.5% in smokers vs 66.7% in nonsmokers ($P = .036$), 83.3% in patients with infarction of the circumflex or right coronary arteries vs 68.5% in those with infarction of the anterior descending artery ($P = .042$), 80.0% in patients with TIMI flow II–III vs 30.0% in those with a final TIMI flow 0–I ($P < .001$), 83.7% in patients with LVEF $\geq 35\%$ vs 26.7% in those with LVEF $< 35\%$ before hospital discharge ($P < .001$), and 82.2% in patients whose samples contained plaque vs 66.0% in those with plaque-free aspirates ($P = .033$).

The variables associated with the occurrence of adverse events in the univariable analysis were tested in the multivariable Cox regression model; independent predictors of long-term MACE were the presence of plaque fragments in the aspirate (hazard ratio

Table 2

Clinical and Angiographic Characteristics of Patients and Association of Variables Prior to Coronary Aspiration With the Presence of Plaque in the Aspirate

	Total	Without plaque	Plaque	P
<i>Prior to coronary aspiration</i>				
Male sex	116 (81.7)	36 (32.4)	75 (67.6)	.340
Age, y	60 ± 13	60 ± 11	60 ± 14	.917
Smokers	97 (68.3)	31 (32.9)	63 (67.0)	.628
Hypertension	68 (47.9)	26 (40.6)	38 (59.4)	.145
Hypercholesterolemia	54 (38.0)	22 (51.5)	31 (58.5)	.158
Diabetes mellitus	32 (22.5)	10 (32.3)	21 (67.7)	.785
Preinfarction angina	38 (27.7)	14 (38.9)	22 (61.1)	.407
Multivessel disease	43 (30.3)	14 (33.3)	28 (66.7)	.873
Culprit AD artery	54 (39.1)	18 (35.3)	33 (64.7)	.586
Pre-PCI TIMI flow 0-I	118 (88.7)	41 (35.7)	74 (64.3)	.134
Collateral circulation	45 (36.6)	14 (31.8)	30 (68.2)	.859
Ischemia time, min [*]	221 [170-310]	217 [180-325]	233 [170-310]	.620
GPIIb/IIIa inhibitors	112 (78.7)	39 (84.8)	68 (75.6)	.214
<i>After coronary aspiration</i>				
Use of stent	134 (95.0)			
Stent diameter, mm	3.3 ± 0.5			
ST decrease ≥ 50% after PCI	87 (74.4)			
Post-PCI TIMI flow II-III	130 (92.9)			
Post-PCI cTFC	26 [21-41]			
LVEF at discharge (%)	47.1 ± 11.3			

AD, anterior descending; cTFC, corrected TIMI frame count; GPIIb/IIIa, glycoprotein IIb/IIIa; LVEF, left ventricular ejection fraction; PCI, percutaneous coronary intervention; STEMI, ST-segment elevation myocardial infarct; TIMI, Thrombolysis in Myocardial Infarction.

Continuous variables are presented as means ± standard deviation or as the median [interquartile range] and categorical variables as n (%).

^{*} Time from onset of symptoms until mechanical reperfusion.

Table 3

Comparison of Clinical and Angiographic Characteristics of Patients With and Without Adverse Events at 5 Years After STEMI (HRs Adjusted by Occurrence of MACE During Follow-up)

	Without MACE	MACE	P	HR (95%CI)	P
Male sex	91 (78.4)	25 (21.6)	.554		
Age, y	59 ± 12	64 ± 15	.084		
Smokers	80 (82.5)	17 (17.5)	.036 ^b	0.62 (0.30-1.29)	.201
Hypertension	51 (75.0)	17 (25.0)	.500		
Hypercholesterolemia	39 (72.2)	15 (27.8)	.241		
Diabetes mellitus	23 (71.9)	9 (28.1)	.390		
Preinfarction angina	28 (73.7)	10 (26.3)	.523		
Multivessel disease	31 (72.1)	12 (27.9)	.313		
Culprit RC or CV artery	70 (83.3)	14 (16.7)	.042 ^b	0.63 (0.25-1.57)	.321
Pre-PCI TIMI flow 0-I	91 (77.1)	27 (22.9)	.552		
Collateral circulation	37 (82.2)	8 (17.8)	.316		
Ischemia time ^a	222 [164-293]	221 [185-329]	.459		
GPIIb/IIIa inhibitors	86 (77.5)	25 (22.5)	.767		
Use of stent	104 (77.6)	30 (22.4)	.657		
Stent diameter, mm	3.4 ± 0.5	3.2 ± 0.4	.284		
Post-PCI ST decrease ≥ 50%	70 (80.5)	17 (19.5)	.235		
Post-PCI TIMI flow II-III	105 (80.8)	25 (19.2)	.001 ^b	0.64 (0.25-1.61)	.341
Post-PCI cTFC	27 [20-41]	25 [21-43]	.772		
LVEF ≥ 35% at discharge	103 (83.7)	20 (16.3)	.001 ^b	0.91 (0.87-0.95)	<.001 ^b
Not fresh coronary thrombus	67 (80)	17 (20)	.306		
Plaque in coronary aspirate	74 (82)	16 (18)	.033 ^b	0.37 (0.17-0.78)	.009 ^b

95%CI, 95% confidence interval; cTFC, corrected TIMI frame count; CX, circumflex; GPIIb/IIIa, glycoprotein IIb/IIIa; HR, hazard ratio; LVEF, left ventricular ejection fraction; MACE, major adverse cardiac events (death, recurrent infarction, urgent revascularization, and/or stent thrombosis); PCI, percutaneous coronary intervention; RC, right coronary; STEMI, ST-segment elevation myocardial infarct; TIMI, Thrombolysis in Myocardial Infarction.

Continuous variables are presented as means ± standard deviation or as the median [interquartile range] and categorical variables as n (%).

^a Time from symptom onset to mechanical reperfusion.

^b Significantly different ($P < .05$).

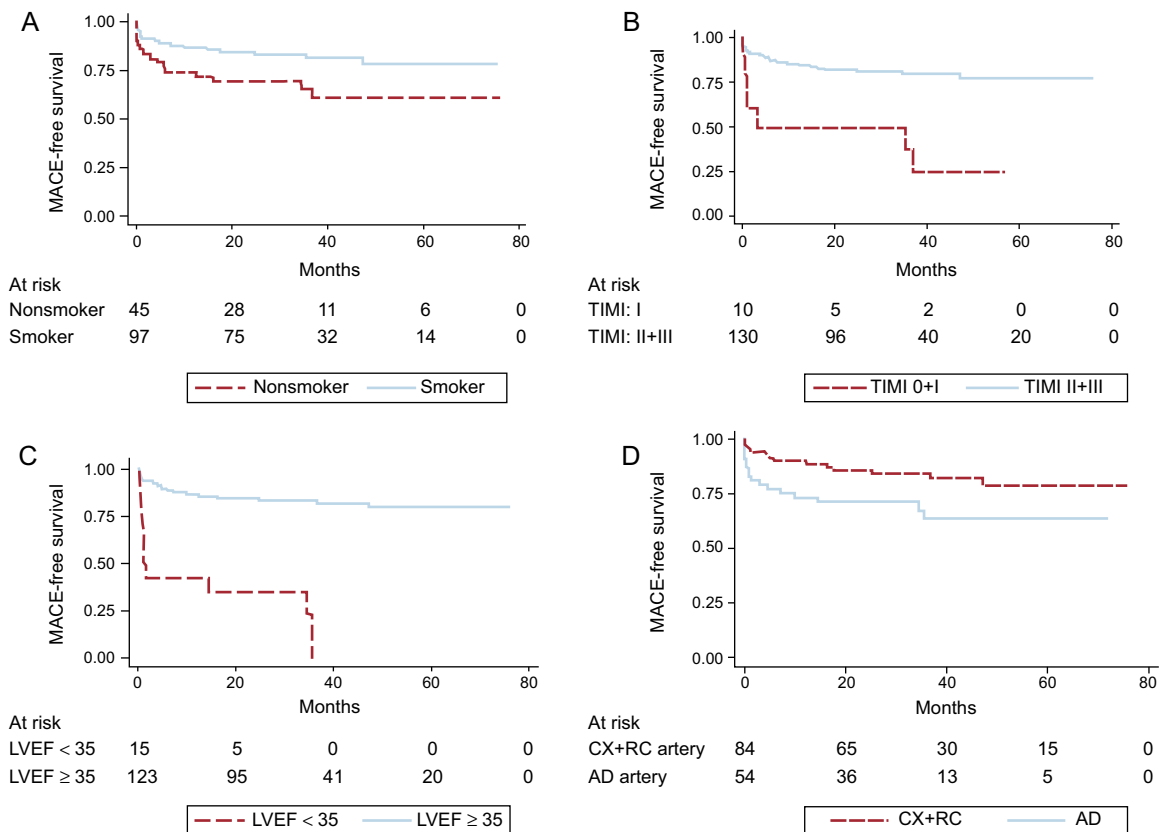


Figure 3. Comparative Kaplan-Meier curves of MACE-free survival rates. A: smokers vs nonsmokers. B: patients with TIMI flow II-III after percutaneous coronary intervention vs patients with final TIMI flow 0-I. C: patients with LVEF ≥ 35% vs patients with LVEF < 35% at discharge. D: patients with infarctions of the CX and RC arteries vs patients with infarctions of the AD artery. AD, anterior descending; CX, circumflex; LVEF, left ventricular ejection fraction; MACE, major adverse cardiovascular events; RC, right coronary; TIMI, Thrombolysis in Myocardial Infarction.

[HR], 0.37; 95% confidence interval [95%CI], 0.18-0.77; $P = .008$) and LVEF (HR = 0.92; 95%CI, 0.88-0.95; $P < .001$) (Table 3). Harrell's C index of the model including the above 5 significant variables (plaque in the coronary aspirate, smoking habit, TIMI flow after PCI, LVEF at discharge, and culprit coronary artery) was .723, indicating a good predictive capacity for MACE. The variable "plaque in the coronary aspirate" improved the discriminative capacity of the model containing only 4 variables ($C = .708$).

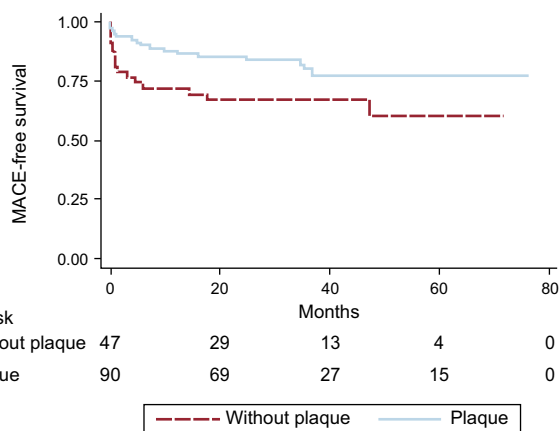


Figure 4. Comparative Kaplan-Meier curves of MACE-free survival of patients with ST-segment elevation acute coronary syndrome whose coronary aspirates contain plaque fragments vs those without plaque. MACE, major adverse cardiovascular events.

DISCUSSION

The main finding of this study is the association between the presence of atheroma in coronary aspirates from patients with STEMI and their event-free survival, an association that has, as far as we know, not been published previously. The reported rate of plaque fragments in the coronary aspirate ranges from 39% to 57%.^{10,18-20} In our series, the proportion was slightly higher (63%), possibly due to the use of immunohistochemical techniques facilitating their identification.

Only a single small series of 49 patients¹⁹ has studied the association between the presence of atheroma in the coronary aspirate and prognosis-related factors. This series analyzed the degree of opacification or myocardial blush, the analytically estimated size of the infarct (peak creatine kinase and its MB isoenzyme), and the LVEF. In the group of patients with plaque in the aspirate (57.1%), there was a greater proportion of myocardial blush grade 3 (82.1% vs 52.4%; $P = .025$), lower creatine kinase concentration (1705 ± 1647 vs 2629 ± 2013 U/L; $P = .042$) and higher LVEF (0.59 ± 0.10 vs 0.52 ± 0.08 ; $P = .012$). These findings coincide with ours, given that the presence of atheroma was associated with favorable prognostic markers.

In our series, 5 variables were associated with the long-term occurrence of MACE: LVEF at discharge, TIMI flow after PCI, culprit coronary artery, smoking, and the presence of atheroma plaque in the coronary aspirate. The influence of the first 3 variables, as well as the protective effect of smoking, concurs with the findings of other authors in large series of patients with acute myocardial infarction,²¹⁻²³ although the cause of the last association is unclear. These 5 variables were included in the multivariable Cox

regression model, and LVEF and presence of plaque in the aspirate were independent predictors of long-term MACE. Plaque aspiration was inversely associated with the cumulative rate of MACE.

On the basis of these results, we postulate that the presence of atheroma plaque in the coronary aspirates is associated with a better prognosis in patients with STEMI. The cause of this association cannot be clarified with our data. We can only speculate that the aspirates containing atheroma fragments could identify a group of patients with larger and/or more unstable plaques, in contrast to the other group with more thrombotic component but with less atheroma. This finding could be reflected in the 2 different mechanisms underlying coronary occlusion: the first, mainly due to the substrate of the arterial wall (plaque rupture), and the second, dependent above all on systemic factors in circulating blood. However, the collection of plaque could also be the consequence of more complete or successful aspiration, although in our series the aspirate weight was inversely associated with the presence of atheroma fragments, making this last theory unlikely.

In most patients, plaque fragments were identified using differential staining of macrophages with a specific antibody (CD68). Staining with CD68 was the most useful technique for this purpose, although in some patients (17%), the plaque had no macrophages and was identified via the presence of smooth muscle fibers, endothelial cells, cholesterol crystals, or iron deposits.

The proportion of macrophages present in the plaque after carotid endarterectomy can also predict restenosis. Helling et al.²⁴ found that patients with plaques rich in macrophages had a higher risk of restenosis (odds ratio [OR] = 0.43; 95%CI, 0.26–0.72), independently of other factors. In addition, the existence of a large lipid core size (> 40%) was associated with lower risk of restenosis (OR = 0.40; 95%CI, 0.19–0.81). Our data did not allow us to explore this hypothesis, given that follow-up examinations did not include angiography. This aspect could represent a future research target.

Various authors have histologically analyzed coronary aspirates from patients with STEMI in series of various sizes, focusing on different histopathological aspects.^{11,12,18,19,25–28} The largest series was published by Kramer et al.,¹² with 1315 patients. In that study, 40% of coronary aspirates contained lytic or organized thrombus (> 1 day), and this histological characteristic was independently associated with long-term mortality (HR = 1.83; 95%CI, 1.14–2.93; *P* = .01). However, the authors recognized that the risk profile of patients with older thrombus could differ from that of patients with fresh thrombus. The presence of plaque was not associated with survival but they performed no immunohistochemical analysis. In our patients, this type of analysis was vital for aspirate characterization.

In another study of 892 patients,¹¹ the risk of incomplete ST-segment recovery tended to be higher in patients with older thrombi (OR = 1.33; 95%CI, 0.95–1.85; *P* = .097) and the ST recovery was a strong predictor of long-term mortality. Although our data fail to support the relationship between thrombus age and clinical outcomes, there was an association between thrombus age and ischemia time: total ischemia time (symptom onset-to-balloon) in patients with older thrombus was almost double that of patients with fresh thrombus (4.3 and 2.4 hours, respectively; *P* = .007).

Limitations

Our study has several limitations. First, the small number of patients increases the possibility of associations among variables being missed. This shortcoming also stops us from independently analyzing the components of the composite outcome MACE.

Second, the formation of arterial thrombi depends not only on the thrombogenicity of the vascular wall, but also circulating factors and blood flow characteristics. No evaluation was performed of these factors. Third, the aspiration technique is unable to completely recover thrombotic material from most patients with STEMI.

CONCLUSIONS

The main conclusion of this study is that the presence of atheroma plaque fragments in the coronary aspirate of patients with STEMI can provide additional prognostic information and that an immunohistochemical study with CD68 is a good method to detect these fragments. The presence of plaques appears to be associated with a more favorable outcome, independently of other already known risk factors, and plaque absence could be used as a marker for the need for more intensive preventive strategies involving antiplatelet and anticoagulant drugs.

WHAT IS KNOWN ABOUT THE TOPIC?

- The relationship between coronary aspirate histology and the outcomes of STEMI patients has only been analyzed in 1 previous study, with thrombus age identified as a predictor of mortality.
- In published series, more than a third of aspirated samples contain plaque fragments; however, there is little information on the factors determining their presence and whether they are related to prognosis.

WHAT DOES THIS STUDY ADD?

- The main contribution of this study is that the presence of atheroma plaque fragments in the coronary aspirate of patients with STEMI can provide additional prognostic information.
- Immunohistochemical staining with CD68 is a good method to detect these fragments.

ACKNOWLEDGMENTS

This work was possible thanks to the help of the catheterization nursing staff and cardiology physicians of our center who participated in the collection of patients' medical information. We especially thank Diego García Fresnadillo, a technician from the anatomy and pathology laboratory, for sample processing.

CONFLICTS OF INTEREST

None declared.

REFERENCES

1. Stone GW, Webb J, Cox DA, et al. for the Enhanced Myocardial Efficacy and Recovery by Aspiration of Liberated Debris (EMERALD) Investigators. Distal micro-circulatory protection during percutaneous coronary intervention in acute ST-segment elevation myocardial infarction: a randomized controlled trial. *JAMA*. 2005;293:1063–1072.
2. Svilaas T, Vlaar PJ, Van der Horst IC, et al. Thrombus aspiration during primary percutaneous coronary intervention. *N Engl J Med*. 2008;358:557–567.
3. Davies MJ, Thomas AC. Plaque fissuring: the cause of acute myocardial infarction, sudden ischaemic death, and crescendo angina. *Br Heart J*. 1985;53:363–373.

4. Mann J, Davies MJ. Mechanisms of progression in native coronary artery disease: role of healed plaque disruption. *Heart*. 1999;82:265–268.
5. Burke AP, Kolodgie FD, Farb A, et al. Healed plaque ruptures and sudden coronary death: evidence that subclinical rupture has a role in plaque progression. *Circulation*. 2001;103:934–940.
6. Henriques de GR, Van Der Wal AC, Van der Loos CM, Becker AE. Sudden unexpected death in young adults. Discrepancies between initiation of acute plaque complications and the onset of acute coronary death. *Eur Heart J*. 2002;23:1433–1440.
7. Fuster V, Badimon L, Badimon JJ, Chesebro JH. The pathogenesis of coronary artery disease and the acute coronary syndromes. *N Engl J Med*. 1992;326:242–250.
8. Fernández-Ortiz A, Badimon JJ, Falk E, et al. Characterization of the relative thrombogenicity of atherosclerotic plaque components: implications for consequences of plaque rupture. *J Am Coll Cardiol*. 1994;23:1562–1569.
9. Ramaola I, Padro T, Peña E, et al. Changes in thrombus composition and profilin-1 release in acute myocardial infarction. *Eur Heart J*. 2015;36:965–975.
10. Rittersma SZ, Van der Wal AC, Koch KT, et al. Plaque instability frequently occurs days or weeks before occlusive coronary thrombosis. A pathological thrombectomy study in primary percutaneous coronary intervention. *Circulation*. 2005;111:1160–1165.
11. Verouden NJ, Kramer MC, Li XF, et al. Histopathology of aspirated thrombus and its association with ST segment recovery in patients undergoing primary percutaneous coronary intervention with routine thrombus aspiration. *Catheter Cardiovasc Interv*. 2011;77:35–42.
12. Kramer MCA, Van der Wal AC, Koch KT, et al. Presence of older thrombus is an independent predictor of long-term mortality in patients with ST-elevation myocardial infarction treated with thrombus aspiration during primary percutaneous coronary intervention. *Circulation*. 2008;118:1810–1816.
13. Rentrop KP, Cohen M, Blanke H, Phillips RA. Changes in collateral channel filling immediately after controlled coronary artery occlusion by an angioplasty balloon in human subjects. *J Am Coll Cardiol*. 1985;5:587–592.
14. Gibson CM, Murphy SA, Rizzo MJ, et al. Relationship between TIMI frame count and clinical outcomes after thrombolysis administration. Thrombolysis in Myocardial Infarction (TIMI) Study Group. *Circulation*. 1999;99:1945–1950.
15. Gibson CM, Cannon CP, Murphy SA, et al. Relationship of TIMI myocardial perfusion grade to mortality after administration of thrombolytic drugs. *Circulation*. 2000;101:125–130.
16. Cutlip DE, Windecker S, Mehran R, et al. on behalf of the Academic Research Consortium. Clinical end points in coronary stent trials: a case for standardized definitions. *Circulation*. 2007;115:2344–2351.
17. Harrell Jr FE, Lee KL, Mark DB. Multivariable prognostic models: issues in developing models, evaluating assumptions and adequacy, and measuring and reducing errors. *Stat Med*. 1996;15:361–387.
18. Sakai T, Inoue S, Matsuyama T, et al. Eosinophils may be involved in thrombus growth in acute coronary syndrome. Histologic examination of aspiration samples. *Int Heart J*. 2009;50:267–277.
19. Zhao HJ, Yan HB, Li D, et al. Pathological analysis of aspirated materials from the culprit lesion in patients with acute myocardial infarction. *Zhonghua Xin Xue Guan Bing Za Zhi*. 2009;37:785–789.
20. Kramer MC, Van der Wal AC, Koch KT, et al. Histopathological features of aspirated thrombi after primary percutaneous coronary intervention in patients with ST-elevation myocardial infarction. *PLoS One*. 2009;4:e5817.
21. Rosell-Ortiz F, Mellado-Vergel FJ, Ruiz-Bailén M, Perea-Milla E. en representación del grupo de investigadores del proyecto PEFEX. Tratamiento extrahospitalario y supervivencia al año de los pacientes con infarto agudo de miocardio con elevación de ST. Resultados del Proyecto para la Evaluación de la Fibrinólisis Extrahospitalaria (PEFEX). *Rev Esp Cardiol*. 2008;61:14–21.
22. Andrés E, Cordero A, Magán P, et al. Mortalidad a largo plazo y reingreso hospitalario tras infarto agudo de miocardio: un estudio de seguimiento de ocho años. *Rev Esp Cardiol*. 2012;65:414–420.
23. García-García C, Molina L, Subirana I, et al. Diferencias en función del sexo en las características clínicas, tratamiento y mortalidad a 28 días y 7 años de un primer infarto agudo de miocardio. Estudio RESCATE II. *Rev Esp Cardiol*. 2014;67:28–35.
24. Hellings WE, Moll FL, De Vries JP, et al. Atherosclerotic plaque composition and occurrence of restenosis after carotid endarterectomy. *JAMA*. 2008;299:547–554.
25. Silvain J, Collet JP, Nagaswami C, et al. Composition of coronary thrombus in acute myocardial infarction. *J Am Coll Cardiol*. 2011;57:1359–1367.
26. Nishihira K, Yamashita A, Ishikawa T, Hatakeyama K, Shibata Y, Asada Y. Composition of thrombi in late drug-eluting stent thrombosis versus de novo acute myocardial infarction. *Thromb Res*. 2010;126:254–257.
27. Cook S, Ladich E, Nakazawa G, et al. Correlation of intravascular ultrasound findings with histopathological analysis of thrombus aspirates in patients with very late drug-eluting stent thrombosis. *Circulation*. 2009;120:391–399.
28. Hoshiba Y, Hatakeyama K, Tanabe T, Asada Y, Goto S. Co-localization of von Willebrand factor with platelet thrombi, tissue factor and platelets with fibrin, and consistent presence of inflammatory cells in coronary thrombi obtained by an aspiration device from patients with acute myocardial infarction. *J Thromb Haemost*. 2006;4:114–120.