

Original article

Echocardiographic Predictors of Exercise Capacity in Patients With Heart Failure and Systolic Dysfunction: Role of Mitral Regurgitation

Marcelo Trivi,* Jorge Thierer, Paola Kuschnir, Adriana Acosta, Javier Marino, Ramiro Guglielmone, and Ricardo Ronderos

Servicios de Cardiología Clínica e Imágenes, Instituto Cardiovascular de Buenos Aires (ICBA), Buenos Aires, Argentina

Article history:

Received 9 March 2011

Accepted 4 June 2011

Available online 9 September 2011

Keywords:

Heart Failure

Exercise

Mitral regurgitation

Echocardiography

ABSTRACT

Introduction and objectives: Patients with heart failure and similar left ventricular systolic dysfunction have differing exercise capacity. The aim of this study was to identify echocardiographic predictors of exercise capacity in patients with heart failure and systolic dysfunction.

Methods: We included 150 patients with class II (70%) or III (30%) heart failure with left ventricular ejection fraction below 40%. Six-minute walking test and cardiac color Doppler-echo, including tissue Doppler of mitral and tricuspid rings, were performed. Moderate and severe mitral regurgitation was considered as significant. Two groups were divided according to the median walking distance (290 m): Group 1, <290 m and Group 2, ≥290 m.

Results: Mitral regurgitation was detected in 112 patients (75%), which was significant in 40 (27%). Group 1 showed more significant mitral regurgitation (35 vs 18%), increased left atrium area (27 ± 1 vs 24 ± 1 cm²), mitral E amplitude (88 ± 5 vs 72 ± 3 cm/s) and systolic pulmonary pressure (37 ± 1 vs 32 ± 1 mmHg, all $P < .05$). By logistic regression analysis, only the presence of significant mitral regurgitation was independently associated with less walked distance (odds ratio: 3.44 95% confidence interval 1.02-11.66, $P < .05$). By multiple linear regression, the only independent predictor of walked distance was left atrium area ($r = 0.25$, beta coefficient: -6.52 ± 2 , $P < .01$).

Conclusions: In patients with class II-III heart failure and left ventricular systolic dysfunction, the main echocardiographic predictors of exercise capacity are related to the presence of significant mitral regurgitation.

© 2011 Sociedad Española de Cardiología. Published by Elsevier España, S.L. All rights reserved.

Predictores ecocardiográficos de capacidad de ejercicio en pacientes con insuficiencia cardíaca sistólica. Valor de la insuficiencia mitral

RESUMEN

Introducción y objetivos: Pacientes con insuficiencia cardíaca y similar disfunción sistólica del ventrículo izquierdo tienen diferente capacidad de ejercicio. El objetivo de este estudio es detectar predictores ecocardiográficos de capacidad de ejercicio en pacientes con insuficiencia cardíaca y disfunción sistólica.

Métodos: Se incluyó a 150 pacientes con insuficiencia cardíaca en clase II (70%) o III (30%) con fracción de eyección ventricular izquierda < 40%. Se efectuó prueba de los 6 minutos de marcha y eco-Doppler color cardíaca, incluyendo Doppler tisular de los anillos mitral y tricuspídeo. Se consideró insuficiencia mitral significativa los grados moderado y severo. Se dividió a los pacientes en dos grupos según la mediana de caminata (290 m): el grupo 1 caminó < 290 m y el grupo 2, ≥ 290 m.

Resultados: Se detectó insuficiencia mitral en 112 pacientes (75%), que fue significativa en 40 (27%). El grupo 1 evidenció más insuficiencia mitral significativa (el 35 frente al 18%), área auricular izquierda (27 ± 1 frente a 24 ± 1 cm²), amplitud de E mitral (88 ± 5 frente a 72 ± 3 cm/s) y presión sistólica pulmonar (37 ± 1 frente a 32 ± 1 mmHg; todos $p < 0,05$). En el análisis multivariable de regresión logística, sólo la presencia de insuficiencia mitral significativa se asoció en forma independiente a menor distancia caminada (odds ratio = 3,44; intervalo de confianza del 95%, 1,02-11,66; $p < 0,05$). En el análisis de regresión lineal múltiple, el único predictor independiente de la distancia caminada fue el área auricular izquierda ($r = 0,25$; $\beta = -6,52 \pm 2$; $p < 0,01$).

Conclusiones: En pacientes con insuficiencia cardíaca en clase II-III y disfunción sistólica ventricular izquierda, los principales predictores ecocardiográficos de capacidad de ejercicio se relacionan con la presencia de insuficiencia mitral significativa.

© 2011 Sociedad Española de Cardiología. Publicado por Elsevier España, S.L. Todos los derechos reservados.

Palabras clave:

Insuficiencia cardíaca

Ejercicio

Insuficiencia mitral

Ecocardiografía

SEE RELATED ARTICLE:

DOI: 10.1016/j.rec.2011.08.004, Rev Esp Cardiol. 2011;64:1079–81

* Corresponding author: Blanco Encalada 1543, 1427 Buenos Aires, Argentina.

E-mail address: mstrivi@icba-cardiovascular.com.ar (M. Trivi).

Abbreviations

EF: ejection fraction
MR: mitral regurgitation

INTRODUCTION

A common challenge in cardiology is: “How can a patient with low ejection fraction (EF) of the left ventricle can exercise without symptoms, while another with equal or better EF is severely symptomatic and unable to even lower activity?” For years, cardiologists have tried to solve this puzzle.^{1,2} Several explanations have been offered, such as the preserved diastolic function, adequate peripheral vasodilatory capacity, or right ventricular function.^{3,4}

Recently, the presence of mitral regurgitation (MR) has been described as an important factor, associated with reduced tolerance, in exercise capacity in heart failure.^{5,6}

In addition to the direct measurement of oxygen (O₂) consumption, a technically demanding and expensive study,⁷ to assess exercise tolerance in heart failure, the 6-minute walking test has become popular in recent years. This test is simple, cheap, reliable, repeatable, and can be performed in almost all patients.^{8,9}

The aim of this study was to identify echocardiographic variables associated with a low distance walked in the 6-minute walking test in patients with heart failure and systolic dysfunction.

METHODS

We selected 151 patients with clinically stable chronic heart failure within the last 3 months and systolic dysfunction, defined as EF≤40%, from the MIMICA study (designed to evaluate the relationship of inflammation and metabolic parameters with EF and functional capacity in heart failure, results previously published).¹⁰ All patients had an available medical record, physical examination, ECG, biochemistry tests, bioelectrical impedance test to determine body composition, color Doppler echocardiogram, and 6-minute walking test. This analysis explores the relationship of echocardiographic parameters with exercise capacity in 150 patients (1 patient was excluded due to a poor acoustic window).

Echocardiographic Protocol

In all patients, transthoracic cardiac color Doppler studies were performed by the same 2 trained operators (RG and MT) using Philips I-33 equipment with 2nd harmonic imaging and tissue Doppler. We excluded patients with inadequate chest, aortic valve disease, or significant arrhythmia. We measured left ventricle EF with biplane Simpson method and tissue Doppler was recorded at the mitral and tricuspid rings, measuring the peak systolic velocity (second systolic peak or S₂), early diastolic (E') and late (A'), electromechanical delay in each segment (from the Q wave to the onset of S) and pre-ejection period of both ventricles (Q wave to onset of ejection in aortic and pulmonary pulsed Doppler).

To estimate the severity of MR qualitative and quantitative parameters were used, according to the guidelines of the American Society of Echocardiography.¹¹ Significant MR included moderate and severe degrees.

6-Minute Walking Test

The test was performed within 7 days. Two trained operators (JM and AA) measured distance walked in 6 min. According to the

median distance walked, 2 groups were defined: Group 1, <290 m and Group 2, ≥290 m.

Statistical Analysis

Continuous variables were expressed as mean ± standard error and they were analyzed by t-test (normal distribution). Categorical variables are shown as percentages and they were analysed by chi-square test. To predict low or high distance walked, a logistic regression model was fitted with variables that achieved $P < .10$. P values were considered as significant at $P < .05$.

Multiple linear regression was also assessed by the association of baseline echocardiographic variables with the distance walked in meters, expressed as a continuous variable. Statistical analysis was performed using STATA 10.

RESULTS

MR was detected in 112 patients (75%): mild in 72 (48%), moderate in 30 (20%), and severe in 10 (7%). Mean walked distance was 290±138 m.

Baseline characteristics of the patients are presented in Table 1. They were predominantly middle-aged men with good functional class. Mean ejection fraction was low. A high percentage was treated with beta blockers, renin-angiotensin system blockers and diuretics.

Table 2 shows echocardiographic variables in Groups 1 and 2. Cavity diameters were similar, but left atrial area was greater (27±1 cm² vs 24±1 cm², $P < .05$) and EF was lower (27±1% vs 29±1%, $P = .05$) in Group 1. Ventricular volumes tended to be higher among those who walked less, without reaching statistical significance.

Table 3 shows the results of Doppler echocardiography in both groups. Patients who walked less had higher systolic pulmonary pressure and rapid filling velocity of anterograde mitral flow. No differences were observed in E/A or E/E' ratios.

Figure 1 graphs the distance walked in the presence of significant MR. The percentage of patients with MR is twice as high among those with less distance walked (18% vs 36%, $\chi^2 = 5.4$, $P = .02$).

In the logistic regression analysis, only the presence of significant MR was independently associated with less distance walked (odds ratio [OR]: 3.44 95% confidence interval [CI] 1.02–11.66, $P < .05$) (Table 4). In multiple linear regressions, the only independent

Table 1
Baseline Characteristics of the Patients

Variable	Value
Age (years)	63±11
Men (%)	84
Coronary etiology (%)	53
Functional class I-II	71
Blood pressure (%)	53
Diabetes mellitus (%)	25
Atrial fibrillation (%)	15
Heart beat (beats/min)	72±13
Systolic blood pressure (mmHg)	111±19
Ejection fraction	28±7
6-minute walking test (m)	290±137
Creatinine clearance (ml/min)	58±18
NT-proBNP (pg/ml)*	1000 (468–2005)
Beta-blockers (%)	91
Angiotensin antagonists (%)	80
Diuretics (%)	79

* Median and [interquartile range] due to asymmetric distribution.

Table 2
Echocardiographic Variables and 6-Minute Walking Distance

Variable	Group 1 (n=74)	Group 2 (n=76)	P
LVDD (mm)	63±1	65±1	.40
LVSD (mm)	53±2	53±2	.90
LAD (mm)	44±1	44±1	.55
LAA (cm ²)	27±1	24±1	.05
EDV (ml)	192±8	181±9	.36
ESV (ml)	142±7	133±8	.35
LVEF (%)	27±1	29±1	.05
Moderate-severe MR	35.1%	18.4%	.02

EDV, end-diastolic volume; ESV, end-systolic volume; LAA, left atrial area; LAD, left atrial antero-posterior diameter; LVDD, left ventricular diastolic diameter; LVEF, left ventricular ejection fraction; LVSD, left ventricular systolic diameter; MR, mitral regurgitation.

predictor of distance walked was left atrial area ($r=0.25$, beta coefficient: -6.52 ± 2 , $P < .01$) (Table 5).

Finally, the presence of significant MR was the only independent echocardiographic predictor of mortality at 2 years (hazard ratio 6.46, 95% CI 2.3-18.1, $P < .01$) in this series.

DISCUSSION

The different functional capacity in patients with heart failure and similar chronic ventricular dysfunction is a long-standing dilemma in clinical cardiology.^{12,13} The results of this study suggest that the presence of significant MR could play a leading role in this scenario: it was the only independent echocardiographic predictor of low distance walked. In our view, the association between a reduction in the distance walked in the 6 minutes test and the presence of significant MR is a novel finding of this study. For a long time, the presence of MR was considered an epiphenomenon of dilated cardiomyopathy. In recent years we have learned that it is not always the case. While most patients with dilated cardiomyopathy have some degree of MR, moderate to severe degrees are not as frequent.¹⁴ Incidence of functional MR is increasing, in parallel with growing coronary artery disease worldwide.¹⁵ The presence of moderate to severe MR adds an unfavorable prognostic factor in these patients.^{16,17} Some of them seem to benefit from surgical correction.^{18,19} The noncorrection of MR in patients undergoing coronary artery bypass surgery seems to overshadow the long-term prognosis.²⁰⁻²³

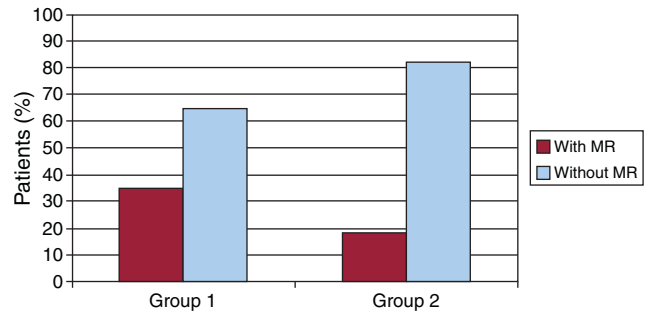
Corroborating these data, in the present study significant MR was the only independent echocardiographic mortality predictor at 2 years.

It is known that the presence of MR in ergometer tests can reduce maximal O₂ consumption in cardiopulmonary exercise

Table 3
Relationship Between Doppler Echocardiography Variables and 6-Minute Walking Distance

Variable	Group 1 (n=74)	Group 2 (n=76)	P
SPP (mmHg)	37±1	32±1	.01
Mitral E (cm/s)	88±5	72±3	.01
Mitral A (cm/s)	64±4	63±4	.88
E/A ratio	2.1±0.3	1.8±0.2	.42
DT	174±1	187±10	.40
peP	128±7	138±10	.40
E/E' ratio	14±1	12±1	.22

DT, mitral E wave deceleration time; peP, pre-ejection period; SPP, systolic pulmonary pressure.

**Figure 1.** Relationship between significant mitral regurgitation and 6-minute walking distance. MR, mitral regurgitation.**Table 4**
Multiple Logistic Regression: Predictors of Reduced 6-Minute Walking Distance

Variable	OR	CI 95%	P
Moderate-severe MR	3.44	1.02-11.66	<.05
LA area	1.06	0.97-1.16	NS
SPP	1.03	1.00-1.06	NS
E/E' ratio	1.01	0.96-1.06	NS

CI, confidence interval; LA, left atrium; MR, mitral regurgitation; NS, no significant; OR, odds ratio; SPP, systolic pulmonary pressure.

testing.⁶ Beyond the controversy of which is better,²⁴ both the measurement of O₂ consumption treadmill test and 6-minute walking test are commonly used to assess functional capacity in heart failure patients.

Given the plethora of literature on the benefits of tissue Doppler, especially the E/E' ratio, to predict functional capacity,²⁵⁻²⁷ it is a little surprising that in this case there are significant differences, even in bivariate analysis. There were no differences between more and less walked distance in other tissue Doppler parameters and measured periods (pre-ejection of both ventricles and electromechanical delay).

Consistent with these findings, other variables with significant differences were associated with the presence of MR, such as left atrial area, mitral E-wave and systolic pulmonary pressure. The only exception was the EF, with borderline significance.

The left atrial area deserves a separate paragraph. It was the only significant independent variable in multiple linear regression analysis. In other words, it was the best quantitative variable associated with the distance walked in meters.

The left atrial area seems to better estimate atrial size than the antero-posterior diameter, and volume is probably even better than the area, as has been proposed. Why is atrial size related to exercise capacity? In addition to MR, other factors must influence this relationship. Thus, it has been reported that left atrial function is a predictor of exercise capacity in patients without contractile dysfunction.²⁸ Atrial peptides related to compliance and atrial pressure appear to play a role in this regard.^{29,30}

Table 5
Multiple Linear Regression: Predictors of 6-Minute Walking Distance

Variable	Beta coefficient	CI 95%	P
LA area	-6.45	-10.82 to -2.07	<.05
SPP	-1.84	-4.20 to 0.51	NS
E/E' ratio	-2.11	-5.07 to 0.84	NS

CI, confidence interval; LA, left atrium; NS, no significant; SPP, systolic pulmonary pressure.

Several limitations can be noted in this study. MR was not quantified systematically. However, we wanted to respect the qualitative and quantitative method that is commonly used in clinical practice. While significant, the logistic regression CI for the MR is wide. However, the predictive power of the distance walked was very consistent as an independent variable in several models tested.

We did not perform direct measurements of O₂ consumption or calculate left atrial volume: both would seem to be important for future research.

CONCLUSIONS

In patients with heart failure and systolic dysfunction, the detection of significant MR was associated with lower walked distance in the 6-minute walking test. Other variables related to MR, such as left atrial area, E wave amplitude of mitral inflow, and pulmonary systolic pressure, were the only echocardiographic predictor of walked distance. MR can be a determinant of functional capacity in patients with heart failure and systolic dysfunction.

CONFLICTS OF INTEREST

None declared.

REFERENCES

- Smart N, Haluska B, Leano R, Case C, Mottram PM, Marwick TH. Determinants of functional capacity in patients with chronic heart failure: role of filling pressure and systolic and diastolic function. *Am Heart J*. 2005;149:152–8.
- Pepi M, Agostoni P, Marenzi G, Dorai E, Guazzi M, Lauri G, et al. The influence of diastolic and systolic function on exercise performance in heart failure due to dilated cardiomyopathy or ischemic heart disease. *Eur J Heart Fail*. 1999;1:161–7.
- Witte KK, Nikitin NP, Cleland JG, Clark AL. Excessive breathlessness in patients with diastolic heart failure. *Heart*. 2006;92:1425–9.
- Borlaug BA, Melenovsky V, Russell SD, Kessler K, Pacak K, Becker LC, et al. Impaired chronotropic and vasodilator reserves limit exercise capacity in patients with heart failure and a preserved ejection fraction. *Circulation*. 2006;114:2138–47.
- Hauptman PJ, Rector TS, Wentworth D, Kubo S. Quality of life in advanced heart failure: role of mitral regurgitation. *Am Heart J*. 2006;151:213–8.
- Tada H, Tamai J, Takaki H, Ohnishi E, Okano Y, Yoshioka T. Mild mitral regurgitation reduces exercise capacity in patients with idiopathic dilated cardiomyopathy. *Int J Cardiol*. 1997;58:41–5.
- Moreo A, De Chiara B, Cataldo G, Piccalò G, Lobiati E, Parolini M, et al. Valor pronóstico de las medidas seriadas de la función ventricular izquierda y del rendimiento en el ejercicio de la insuficiencia cardiaca crónica. *Rev Esp Cardiol*. 2006;59:905–10.
- Houghton AR, Harrison M, Cowley AJ, Hampton JR. Assessing exercise capacity, quality of life and haemodynamics in heart failure: do the tests tell us the same thing? *Eur J Heart Fail*. 2002;4:289–95.
- Shah MR, Hasselblad V, Gheorghiadu M, Adams Jr KF, Swedberg K, Califf RM, et al. Prognostic usefulness of the six-minute walk in patients with advanced congestive heart failure secondary to ischemic or nonischemic cardiomyopathy. *Am J Cardiol*. 2001;88:987–93.
- Thierier J, Acosta A, Vainstein N, Sultan M, Francesia A, Marino J, et al. Relation of left ventricular ejection fraction and functional capacity with metabolism and inflammation in chronic heart failure with reduced ejection fraction (from the MIMICA Study). *Am J Cardiol*. 2010;105:977–83.
- Zoghbi WA, Enriquez-Sarano M, Foster E, Grayburn PA, Kraft CD, Levine RA, et al.; American Society of Echocardiography. Recommendations for evaluation of the severity of native valvular regurgitation with two-dimensional and Doppler echocardiography. *J Am Soc Echocardiogr*. 2003;16:777–802.
- Skaluba SJ, Litwin SE. Mechanisms of exercise intolerance: insights from tissue Doppler imaging. *Circulation*. 2004;109:972–7.
- Hauptman PJ, Masoudi FA, Weintraub WS, Pina I, Jones PG, Spertus JA. Cardiovascular Outcomes Research Consortium. Variability in the clinical status of patients with advanced heart failure. *J Card Fail*. 2004;10:397–402.
- Patel JB, Borgeson DD, Barnes ME, Rihal CS, Daly RC, Redfield MM. Mitral regurgitation in patients with advanced systolic heart failure. *J Card Fail*. 2004;10:285–91.
- Michelena HI, Bichara VM, Margaryan E, Forde I, Topilsky Y, Suri R, et al. Avances en el tratamiento de la insuficiencia mitral grave. *Rev Esp Cardiol*. 2010;63:820–31.
- Cioffi G, Tarantini L, De Feo S, Pulignano G, Del Sindaco D, Stefanelli C, et al. Functional mitral regurgitation predicts 1-year mortality in elderly patients with systolic chronic heart failure. *Eur J Heart Fail*. 2005;7:1112–7.
- Peteiro J, Monserrat L, Piñón P, Bouzas A, Campos R, Mosquera I, et al. Valor pronóstico de la regurgitación mitral en reposo y ejercicio durante la ecocardiografía de ejercicio en pacientes con disfunción ventricular izquierda. *Rev Esp Cardiol*. 2007;60:234–43.
- Acker MA, Bolling S, Shemin R, Kirklin J, Oh JK, Mann DL, et al.; Acorn Trial Principal Investigators and Study Coordinators. Mitral valve surgery in heart failure: insights from the Acorn Clinical Trial. *J Thorac Cardiovasc Surg*. 2006;132:568–77.
- Tulner SA, Steendijk P, Klautz RJ, Tops L, Bax JJ, Versteegh MI, et al. Clinical efficacy of surgical heart failure therapy by ventricular restoration and restrictive mitral annuloplasty. *J Card Fail*. 2007;13:178–83.
- Mosquera VX, Bouzas-Mosquera A, Estévez F, Herrera JM, Campos V, Portela F, et al. Reparación mitral de la insuficiencia mitral isquémica con anillo Carpentier-McCarthy-Adams IMR ETlogix®: resultados ecocardiográficos a medio plazo. *Rev Esp Cardiol*. 2010;63:1200–4.
- Di Mauro M, Di Giammarco G, Vitolla G, Contini M, Iacò AL, Bivona A, et al. Impact of no-to-moderate mitral regurgitation on late results after isolated coronary artery bypass grafting in patients with ischemic cardiomyopathy. *Ann Thorac Surg*. 2006;81:2128–34.
- Kang DH, Kim MJ, Kang SJ, Song JM, Song H, Hong MK, et al. Mitral valve repair versus revascularization alone in the treatment of ischemic mitral regurgitation. *Circulation*. 2006;114(1 Suppl):I499–503.
- Grossi EA, Crooke GA, DiGiorgi PL, Schwartz CF, Jorde U, Applebaum RM, et al. Impact of moderate functional mitral insufficiency in patients undergoing surgical revascularization. *Circulation*. 2006;114(1 Suppl):I573–6.
- Houghton AR, Harrison M, Cowley AJ, Hampton JR. Assessing exercise capacity, quality of life and haemodynamics in heart failure: do the tests tell us the same thing? *Eur J Heart Fail*. 2002;4:289–95.
- Witte KK, Nikitin NP, De Silva R, Cleland JG, Clark AL. Exercise capacity and cardiac function assessed by tissue Doppler imaging in chronic heart failure. *Heart*. 2004;90:1144–50.
- Hamdan A, Shapira Y, Bengal T, Mansur M, Vaturi M, Sulkes J, et al. Tissue Doppler imaging in patients with advanced heart failure: relation to functional class and prognosis. *J Heart Lung Transplant*. 2006;25:214–8.
- Bruch C, Klem I, Breithardt G, Wichter T, Gradaus R. Diagnostic usefulness and prognostic implications of the mitral E/E' ratio in patients with heart failure and severe secondary mitral regurgitation. *Am J Cardiol*. 2007;100:860–5.
- Vaturi M, Levine RA, Yosefy C, O'Neil MJ, Picard MH, Hung J. Usefulness of left atrial emptying fraction to predict exercise capacity in patients with normal systolic left ventricular function and without myocardial ischemia. *Am J Cardiol*. 2005;95:1014–7.
- Feringa HH, Poldermans D, Klein P, Braun J, Klautz RJ, Van Domburg RT, et al. Plasma natriuretic peptide levels reflect changes in heart failure symptoms, left ventricular size and function after surgical mitral valve repair. *Int J Cardiovasc Imaging*. 2007;23:159–65.
- Hogenhuis J, Jaarsma T, Voors AA, Hillege HL, Lesman I, Van Veldhuisen DJ. Correlates of B-type natriuretic peptide and 6-min walk in heart failure patients. *Int J Cardiol*. 2006;108:63–7.