

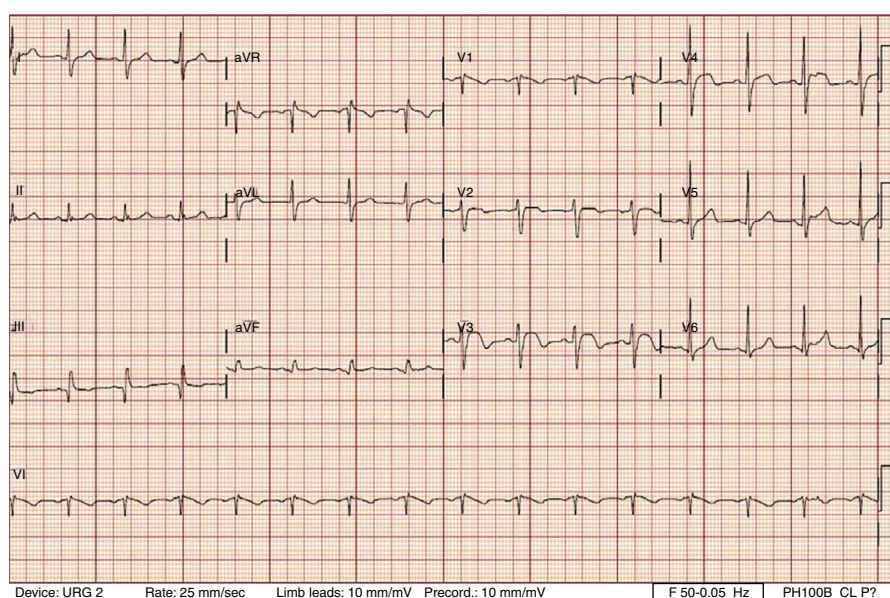
ECG Contest

ECG, May 2019

ECG de mayo de 2019

Ana Rivero Monteagudo,^{a,*} Ester Macia Palafox,^a and Marta Tomás Mallebrera^b^a Departamento de Cardiología, Hospital Universitario Fundación Jiménez Díaz, Madrid, Spain^b Departamento de Radiología, Hospital Universitario Fundación Jiménez Díaz, Madrid, Spain

The patient was a 65-year-old woman who attended the emergency room for sudden dyspnea with onset 12 hours earlier. Her relevant medical history included metastatic breast adenocarcinoma, for which she had undergone mastectomy 4 years earlier, and received radiotherapy. In recent months, several lines of chemotherapy had been administered. The **Figure** shows the electrocardiogram recorded in the emergency room. What do you think was the most likely diagnosis?

**Figure.**

1. Acute myocardial infarction resulting from obstruction of the left anterior descending artery
2. Isolated acute right ventricular myocardial infarction
3. Acute pulmonary embolism
4. Myocardial infiltration due to metastasis

Submit your answer to <http://www.revespcardiol.org/en/electroreto/72/05>. The solution will be published in the next issue (June 2019). #ECGChallenge #RetoECG.

* Corresponding author:

E-mail address: ana.rivero@fjd.es (A. Rivero Monteagudo).