

ECG Contest

ECG, May 2016

ECG de mayo de 2016

Víctor Bazán

Unidad de Arritmias, Servicio de Cardiología, Hospital de la Santa Creu i Sant Pau, Barcelona, Spain



A 52-year-old woman with hypertension and no underlying structural heart disease. Past medical history of repeated presyncope associated with emotional stress and one sudden syncope. The first ECG (Figure 1) shows blocked sinus P waves alternating with conducted P waves with a narrow QRS and others with a long PR interval and wide QRS. In the second ECG, performed a few minutes later (Figure 2), in association with increased sinus tachycardia, atrioventricular conduction becomes consistently 1:1 with a long PR and wide QRS. What is causing these changes? (Clinical case courtesy of Dr. Enrique Rodríguez-Font.)

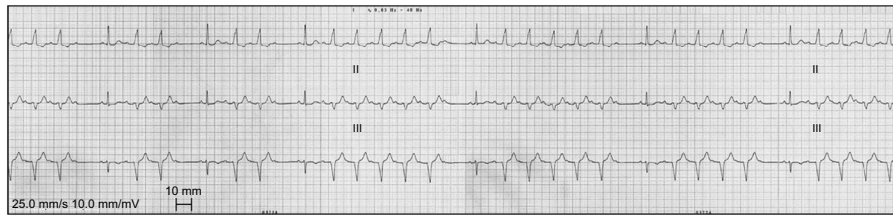


Figure 1.

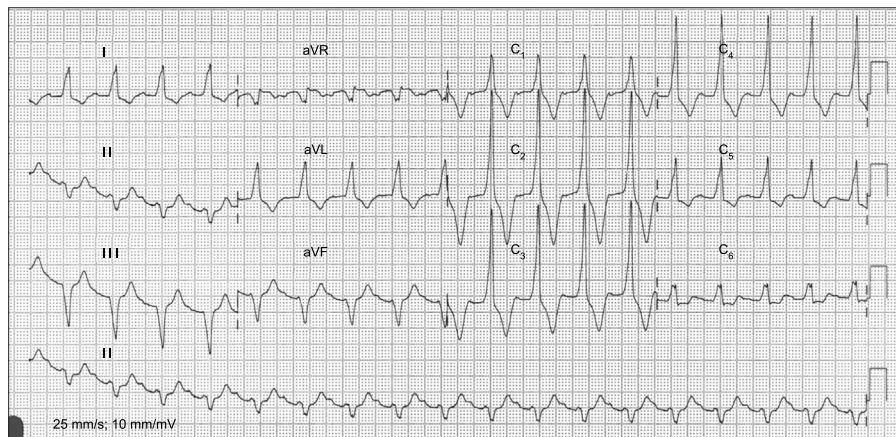


Figure 2.

Suggest a solution to this ECG Contest at <http://www.revespcardiolog.org/es/electroreto/69/05> (only Spanish). The answer will be published in the next issue (June 2016). #RetoECG.

E-mail address: victorbazang@yahoo.com

<http://dx.doi.org/10.1016/j.rec.2015.12.018>

1885-5857/© 2016 Sociedad Española de Cardiología. Published by Elsevier España, S.L.U. All rights reserved.